



Smithsonian Institution

Archives of American Art

Anna Walinska's Travel Diary, 1954 November-1955 March

Extracted on Mar-29-2024 01:55:08

The Smithsonian Institution thanks all digital volunteers that transcribed and reviewed this material. Your work enriches Smithsonian collections, making them available to anyone with an interest in using them.

The Smithsonian Institution (the "Smithsonian") provides the content on this website (transcription.si.edu), other Smithsonian websites, and third-party sites on which it maintains a presence ("SI Websites") in support of its mission for the "increase and diffusion of knowledge." The Smithsonian invites visitors to use its online content for personal, educational and other non-commercial purposes. By using this website, you accept and agree to abide by the [following terms](#).

- If sharing the material in personal and educational contexts, please cite the Archives of American Art as source of the content and the project title as provided at the top of the document. Include the accession number or collection name; when possible, link to the Archives of American Art website.
- If you wish to use this material in a for-profit publication, exhibition, or online project, please contact Archives of American Art or transcribe@si.edu

For more information on this project and related material, contact the Archives of American Art. [See this project](#) and other collections in the Smithsonian Transcription Center.

284

Carl Jung.
Tuesday Feb. 15
[[~~strickethrough~~]] October 10 [[~~strickethrough~~]]

Jung has explored yoga, alchemy, fairy tales, tribal rites of the Pueblo Indians, German romantic philosophers, Zen Buddhism, extrasensory perception & the cave drawings of prehistoric man. According to him, psychiatry must take into account all of man's experience, from the most intensely practical to the most tenuously mystical.

He denied the predominantly sexual nature of the libido.

Jung has suggested to mankind a way of 'adjustment,' not merely to his animal instincts & social pressures but to his great paradoxes & his eternal religious needs.

- Individuation means to become what one is really meant to be. In Zen Buddhism they have a saying: Show your natural face.

285

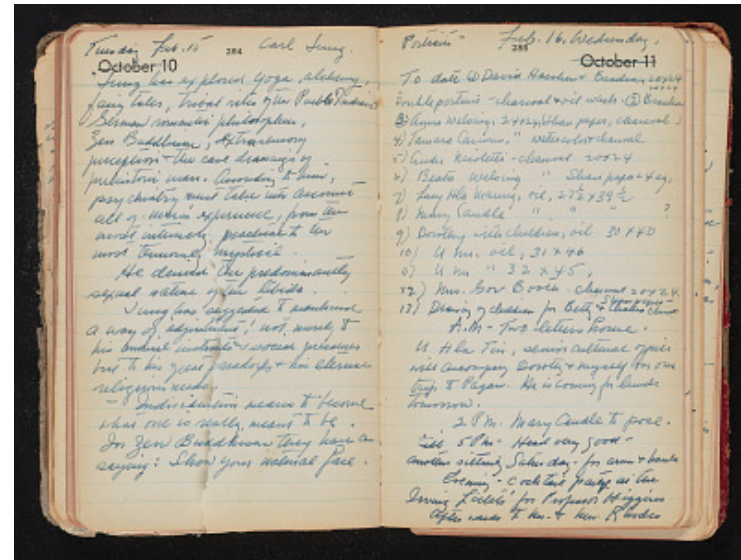
Portraits -
Feb. 16, Wednesday,
[[~~strickethrough~~]] October 11 [[~~strickethrough~~]]

To date (1) David Hacohen & Bracha, 20x24 20x24
Double portraits - charcoal & oil wash. (2) Bracha
(3) Anna Welsing, 24x24, (Shan paper, charcoal)
4) Tamara Carman, 24x24 water color & charcoal
5) Andre Nicoletti - charcoal 20x24
6) Beata Welsing charcoal Shan paper - 4 eq.
7) Lucy Hla Maung, oil, 27 1/2 x 39 1/2
8) Mary Caudle oil 27 1/2 x 39 1/2 ?
9) Dorothy with children, oil 30x40
10) U Nu, oil, 31x46
11) U Nu oil 32x45,
12) Mrs. Gor-Booth charcoal 20x24
Shan paper -
13) Drawing of children for Betty & Charles [[C?]]

A.M. - Two letters home.
U Hla Tin, senior cultural officer will accompany Dorothy & myself for our trip to Pagan. He is coming for lunch tomorrow.

2 PM. Mary Caudle to pose, till 5 PM - Head very good - another sitting Saturday - for arms & hands

Evening - cocktail party at the Irving Lichts' for Professor Higgins
Afterwards to Mr. & Mrs. Rhodes



Anna Walinska's Travel Diary, 1954 November-1955 March
Transcribed and Reviewed by Digital Volunteers
Extracted Mar-29-2024 01:55:08



Smithsonian Institution

Archives of American Art

The mission of the Smithsonian is the increase and diffusion of knowledge - shaping the future by preserving our heritage, discovering new knowledge, and sharing our resources with the world. Founded in 1846, the Smithsonian is the world's largest museum and research complex, consisting of 19 museums and galleries, the National Zoological Park, and nine research facilities. Become an active part of our mission through the Transcription Center. Together, we are discovering secrets hidden deep inside our collections that illuminate our history and our world.

Join us!

The Transcription Center: <https://transcription.si.edu>

On Facebook: <https://www.facebook.com/SmithsonianTranscriptionCenter>

On Twitter: [@TranscribeSI](https://twitter.com/TranscribeSI)

Connect with the Smithsonian

Smithsonian Institution: www.si.edu

On Facebook: <https://www.facebook.com/Smithsonian>

On Twitter: [@smithsonian](https://twitter.com/smithsonian)