



Smithsonian Institution

Archives of American Art

Anna Walinska's Travel Diary, 1955 March-April

Extracted on Mar-28-2024 05:01:52

The Smithsonian Institution thanks all digital volunteers that transcribed and reviewed this material. Your work enriches Smithsonian collections, making them available to anyone with an interest in using them.

The Smithsonian Institution (the "Smithsonian") provides the content on this website (transcription.si.edu), other Smithsonian websites, and third-party sites on which it maintains a presence ("SI Websites") in support of its mission for the "increase and diffusion of knowledge." The Smithsonian invites visitors to use its online content for personal, educational and other non-commercial purposes. By using this website, you accept and agree to abide by the [following terms](#).

- If sharing the material in personal and educational contexts, please cite the Archives of American Art as source of the content and the project title as provided at the top of the document. Include the accession number or collection name; when possible, link to the Archives of American Art website.
- If you wish to use this material in a for-profit publication, exhibition, or online project, please contact Archives of American Art or transcribe@si.edu

For more information on this project and related material, contact the Archives of American Art. [See this project](#) and other collections in the Smithsonian Transcription Center.

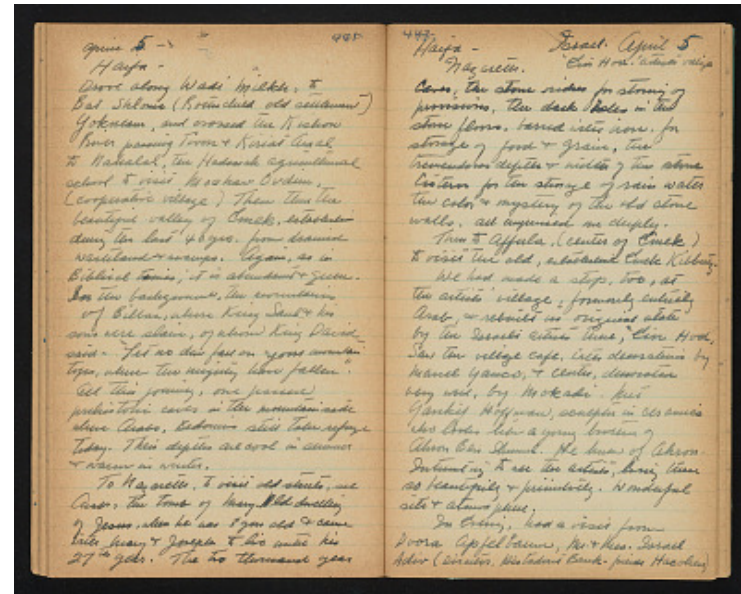
441

April 5-

Haifa -

Drove along Wadi Milkh [[Milk]], to Bat Shlomo (Rothschild old settlement) Yokneam [[Yokne'am]], and crossed the Kishon River passing Tivon [[Tiv'on]] & Kiri'at Amal to Nahalal, the Hadassah Agricultural School to visit Moshav Ovdim, (cooperative village) Then thru the beautiful valley of Emek, established during the last 40 years, from drained wasteland & swamps. Again, as in Biblical times, it is abundant & green. In the background, the mountains of Bilboa [[Gilboa]], where King Saul & his sons were slain, of whom King David said - "Let no dew fall on your mountain tops, where the mighty have fallen." All this journey, one passed prehistoric caves in the mountainside where Arabs, Bedouins still take refuge today. Their depths are cool in summer & warm in winter.

To Nazareth, to visit old streets, see Arabs, the tomb of Mary. Old dwelling of Jesus, when he was 3 yrs old & came with Mary & Joseph to live until his 27th year. The two thousand year



442

Haifa -

Nazareth.

Israel, April 5.

'Ein Hod' Artists' Village

caves, the stone niches for storing of provisions, the dark holes in the stone floors, barred with iron, for storage of food & grain, the tremendous depth & width of the stone cistern for the storage of rain water the color & mystery of the old stone walls, all impressed me deeply.

Then to Affula, (center of Emek) to visit the old, established Emek Kibbutz.

We had made a stop, too, at the artists' village, formerly entirely Arab, & rebuilt in original state by the Israeli artists there. "Ein Hod, Saw the village cafe, with decorations by Marcel Yanco, & center, decorated very well, by Mokadi. Met Yankif Hoffman, sculptor in ceramics who looks like a young brother of Ahron Ben Shmuel. He knew of Ahron. Interesting to see the artists, living there so beautifully & primitively. Wonderful site & atmosphere.

In Evening, had a visit from Dvora Apfelbaum, Mr. & Mrs. Israel Adiv (Director, Histadrut Bank - friends Hacohen)

Anna Walinska's Travel Diary, 1955 March-April
Transcribed and Reviewed by Digital Volunteers
Extracted Mar-28-2024 05:01:52



Smithsonian Institution

Archives of American Art

The mission of the Smithsonian is the increase and diffusion of knowledge - shaping the future by preserving our heritage, discovering new knowledge, and sharing our resources with the world. Founded in 1846, the Smithsonian is the world's largest museum and research complex, consisting of 19 museums and galleries, the National Zoological Park, and nine research facilities. Become an active part of our mission through the Transcription Center. Together, we are discovering secrets hidden deep inside our collections that illuminate our history and our world.

Join us!

The Transcription Center: <https://transcription.si.edu>

On Facebook: <https://www.facebook.com/SmithsonianTranscriptionCenter>

On Twitter: [@TranscribeSI](https://twitter.com/TranscribeSI)

Connect with the Smithsonian

Smithsonian Institution: www.si.edu

On Facebook: <https://www.facebook.com/Smithsonian>

On Twitter: [@smithsonian](https://twitter.com/smithsonian)