



Smithsonian Institution

Smithsonian National Air and Space Museum Archives

Knabenshue Collection - National Park Service

Extracted on Mar-29-2024 03:47:46

The Smithsonian Institution thanks all digital volunteers that transcribed and reviewed this material. Your work enriches Smithsonian collections, making them available to anyone with an interest in using them.

The Smithsonian Institution (the "Smithsonian") provides the content on this website (transcription.si.edu), other Smithsonian websites, and third-party sites on which it maintains a presence ("SI Websites") in support of its mission for the "increase and diffusion of knowledge." The Smithsonian invites visitors to use its online content for personal, educational and other non-commercial purposes. By using this website, you accept and agree to abide by the [following terms](#).

- If sharing the material in personal and educational contexts, please cite the Smithsonian National Air and Space Museum Archives as source of the content and the project title as provided at the top of the document. Include the accession number or collection name; when possible, link to the Smithsonian National Air and Space Museum Archives website.
- If you wish to use this material in a for-profit publication, exhibition, or online project, please contact Smithsonian National Air and Space Museum Archives or transcribe@si.edu

For more information on this project and related material, contact the Smithsonian National Air and Space Museum Archives. [See this project](#) and other collections in the Smithsonian Transcription Center.

BASIC AND GENERAL DATA

UTILITY SYSTEMS

DEVELOPMENT OUTLINES

following sections of the Development Outline will be prepared in chart form by the Branch of Engineering. The charts will be bound with the drawings indicated if such are prepared; otherwise, they will be bound with the General Development Plan.

It is intended that separate charts will be prepared for each type of utility system listed below, but that each separate chart will tabulate, as required by the chart headings, all pertinent data on existing and proposed utility installations for the entire park or monument. There will be contained in the Master Plan, therefore, one telephone chart, one radio chart, one water system chart, etc., although more than one chart may be placed on the same sheet if desired. Additional utility data not covered by the charts will be given in narrative form to accompany the large scale Utility Layout Plans. (See page 78.)

The following Utility System Charts are desired: (See Plates III and IV.)

The Telephone Chart

The Radio Chart

The Power Chart

The above three charts should be bound with the Communications and Power System Map.

The Sewerage and Sewage Disposal Systems Chart

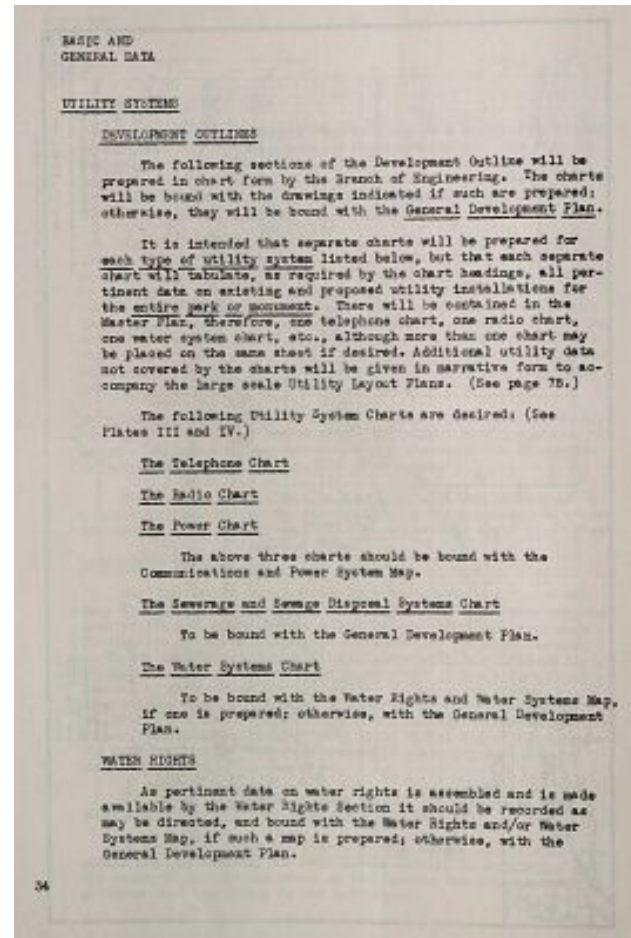
To be bound with the General Development Plan

The Water Systems Chart

To be bound with the Water Rights and Water Systems Map, if one is prepared; otherwise, with the General Development Plan.

WATER RIGHTS

As pertinent data on water rights is assembled and is made available by the Water Rights Section it should be recorded as may be directed, and bound with the Water Rights and/or Water Systems Map, if such a map is prepared; otherwise, with the General Development Plan.





Smithsonian Institution

Smithsonian National Air and Space Museum Archives

The mission of the Smithsonian is the increase and diffusion of knowledge - shaping the future by preserving our heritage, discovering new knowledge, and sharing our resources with the world. Founded in 1846, the Smithsonian is the world's largest museum and research complex, consisting of 19 museums and galleries, the National Zoological Park, and nine research facilities. Become an active part of our mission through the Transcription Center. Together, we are discovering secrets hidden deep inside our collections that illuminate our history and our world.

Join us!

The Transcription Center: <https://transcription.si.edu>

On Facebook: <https://www.facebook.com/SmithsonianTranscriptionCenter>

On Twitter: [@TranscribeSI](https://twitter.com/TranscribeSI)

Connect with the Smithsonian

Smithsonian Institution: www.si.edu

On Facebook: <https://www.facebook.com/Smithsonian>

On Twitter: [@smithsonian](https://twitter.com/smithsonian)