



Smithsonian Institution

Archives of American Art

Lilian Swann Saarinen's Diary, 1935-1936 October

Extracted on Apr-23-2024 12:46:36

The Smithsonian Institution thanks all digital volunteers that transcribed and reviewed this material. Your work enriches Smithsonian collections, making them available to anyone with an interest in using them.

The Smithsonian Institution (the "Smithsonian") provides the content on this website (transcription.si.edu), other Smithsonian websites, and third-party sites on which it maintains a presence ("SI Websites") in support of its mission for the "increase and diffusion of knowledge." The Smithsonian invites visitors to use its online content for personal, educational and other non-commercial purposes. By using this website, you accept and agree to abide by the [following terms](#).

- If sharing the material in personal and educational contexts, please cite the Archives of American Art as source of the content and the project title as provided at the top of the document. Include the accession number or collection name; when possible, link to the Archives of American Art website.
- If you wish to use this material in a for-profit publication, exhibition, or online project, please contact Archives of American Art or transcribe@si.edu

For more information on this project and related material, contact the Archives of American Art. [See this project](#) and other collections in the Smithsonian Transcription Center.

~~THURSDAY, APRIL 23, 1936~~
114th Day 252 Days to come

(cont.) S.S. Wash

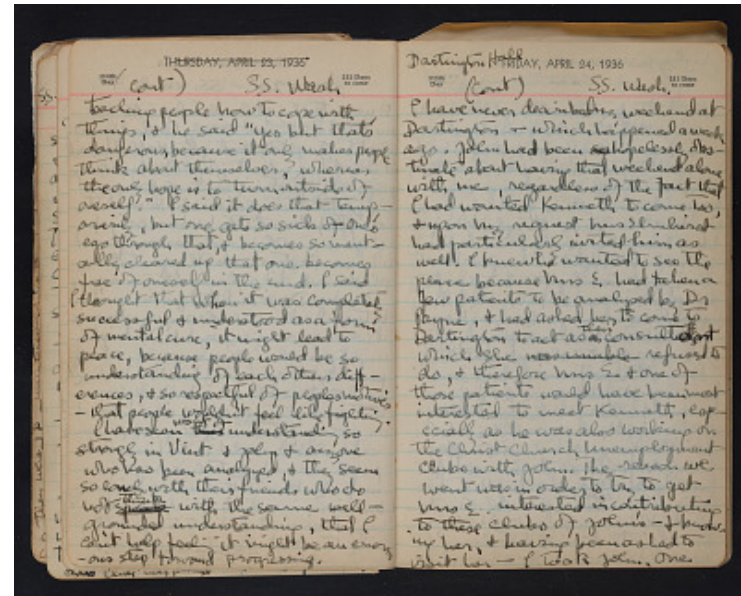
teaching people how to cope with things, & he said "Yes but that's dangerous, because it only makes people think about themselves, whereas the only hope is to turn outside of oneself." I said it does that temporarily, but one gets so sick of one's ego through that, & becomes so mentally cleared up that one becomes free of oneself in the end. I said I thought that when it was completely successful & understood as a form of mental cure, it might lead to peace, because people would be so understanding of each others differences, & so respectful of peoples motives - that people wouldn't feel like fighting.

I have seen ~~this~~ want of understanding so strongly in Vint & John & anyone who has been analyzed, & they seem so lonely with their friends who do not ~~think~~ speak ~~think~~ think with the same well-grounded understanding, that I can't help feeling it might be an enormous step toward progressing.

Dartington Hall
FRIDAY, APRIL 24, 1936
115th Day 251 Days to come

(cont) S.S. Wash

I have never described my weekend at Dartington - which happened a week ago. John had been ~~so~~ hopelessly obstinate about having that weekend alone with me, regardless of the fact that I had wanted Kenneth to come too, & upon my request Mrs Elmhirst had particularly invited him as well. I knew he wanted to see the place because Mrs E. had taken a few patients to be analyzed by Dr Payne, & had asked her to come to Dartington to act as ~~a~~ their consultant which she ~~was~~ unable ~~to~~ refused to do, & therefore Mrs E & one of those patients would have been most interested to meet Kenneth, especially as he was also working on the Christ Church Unemployment Clubs with John. The reason we went was in order to try to get Mrs E. interested in contributing to these clubs of John's - & knowing her, & having been asked to visit her - I took John. One



Lilian Swann Saarinen's Diary, 1935-1936 October
Transcribed and Reviewed by Digital Volunteers
Extracted Apr-23-2024 12:46:36



Smithsonian Institution

Archives of American Art

The mission of the Smithsonian is the increase and diffusion of knowledge - shaping the future by preserving our heritage, discovering new knowledge, and sharing our resources with the world. Founded in 1846, the Smithsonian is the world's largest museum and research complex, consisting of 19 museums and galleries, the National Zoological Park, and nine research facilities. Become an active part of our mission through the Transcription Center. Together, we are discovering secrets hidden deep inside our collections that illuminate our history and our world.

Join us!

The Transcription Center: <https://transcription.si.edu>

On Facebook: <https://www.facebook.com/SmithsonianTranscriptionCenter>

On Twitter: [@TranscribeSI](https://twitter.com/TranscribeSI)

Connect with the Smithsonian

Smithsonian Institution: www.si.edu

On Facebook: <https://www.facebook.com/Smithsonian>

On Twitter: [@smithsonian](https://twitter.com/smithsonian)