



Smithsonian Institution

Archives of American Art

"Feminist Education at the Feminist Studio Workshop, The Woman's Building in Los Angeles" by Ruth Iskin, 1976

Extracted on Jun-25-2022 10:16:33

The Smithsonian Institution thanks all digital volunteers that transcribed and reviewed this material. Your work enriches Smithsonian collections, making them available to anyone with an interest in using them.

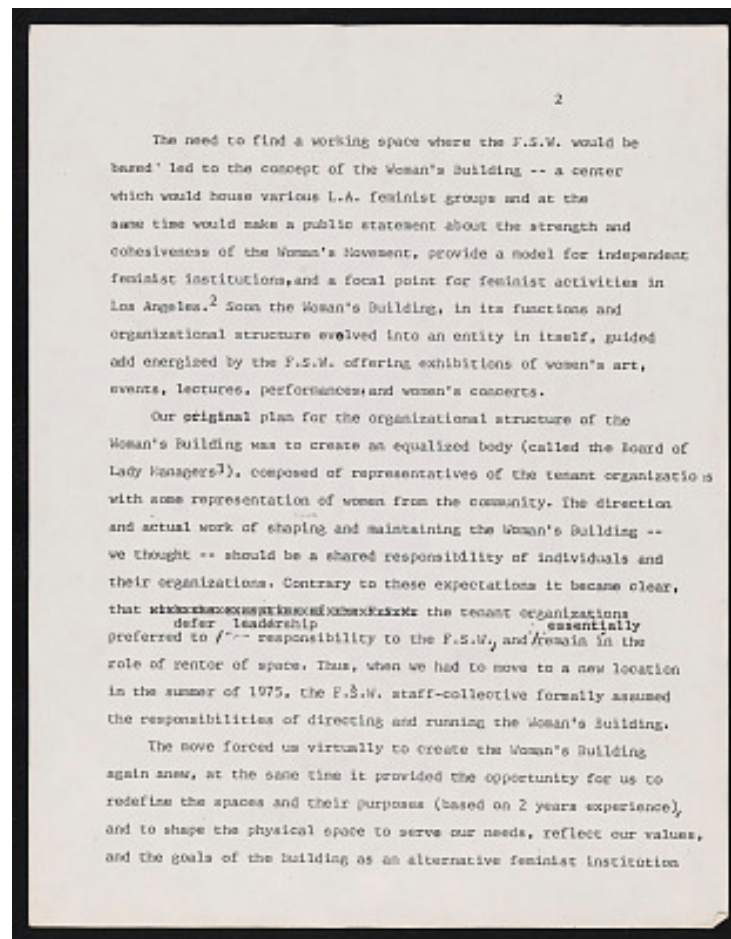
The Smithsonian Institution (the "Smithsonian") provides the content on this website (transcription.si.edu), other Smithsonian websites, and third-party sites on which it maintains a presence ("SI Websites") in support of its mission for the "increase and diffusion of knowledge." The Smithsonian invites visitors to use its online content for personal, educational and other non-commercial purposes. By using this website, you accept and agree to abide by the [following terms](#).

- If sharing the material in personal and educational contexts, please cite the Archives of American Art as source of the content and the project title as provided at the top of the document. Include the accession number or collection name; when possible, link to the Archives of American Art website.
- If you wish to use this material in a for-profit publication, exhibition, or online project, please contact Archives of American Art or transcribe@si.edu

For more information on this project and related material, contact the Archives of American Art. [See this project](#) and other collections in the Smithsonian Transcription Center.

The need to find a working space where the F.S.W. could be based led to the concept of the Woman's Building -- a center which would house various L.A. feminist groups and at the same time would make a public statement about the strength and cohesiveness of the Woman's Movement, provide a model for independent feminist institutions, and a focal point for feminist activities in Los Angeles.² Soon the Woman's Building, in its functions and organizational structure evolved into an entity in itself, guided and energized by the F.S.W. offering exhibitions of women's art, events, lectures, performances, and women's concerts. Our original plan for the organizational structure of the Woman's Building was to create an equalized body (called the Board of Lady Managers³), composed of representatives of the tenant organizations with some representation of women from the community. The direction and actual work of shaping and maintaining the Woman's Building -- we thought -- should be a shared responsibility of individuals and their organizations. Contrary to these expectations it became clear, that ~~the tenant organizations~~ preferred to defer leadership responsibility to the F.S.W., and essentially remain in the role of renter of space. Thus, when we had to move to a new location in the summer of 1975, the F.S.W. staff-collective formally assumed the responsibilities of directing and running the Woman's Building.

The move forced us virtually to create the Woman's Building again anew, at the same time it provided the opportunity for us to redefine the spaces and their purposes (based on 2 years experience), and to shape the physical space to serve our needs, reflect our values, and the goals of the Building as an alternative feminist institution



"Feminist Education at the Feminist Studio Workshop, The Woman's Building in Los Angeles" by Ruth Iskin, 1976
 Transcribed and Reviewed by Digital Volunteers
 Extracted Jun-25-2022 10:16:33



Smithsonian Institution

Archives of American Art

The mission of the Smithsonian is the increase and diffusion of knowledge - shaping the future by preserving our heritage, discovering new knowledge, and sharing our resources with the world. Founded in 1846, the Smithsonian is the world's largest museum and research complex, consisting of 19 museums and galleries, the National Zoological Park, and nine research facilities. Become an active part of our mission through the Transcription Center. Together, we are discovering secrets hidden deep inside our collections that illuminate our history and our world.

Join us!

The Transcription Center: <https://transcription.si.edu>

On Facebook: <https://www.facebook.com/SmithsonianTranscriptionCenter>

On Twitter: [@TranscribeSI](https://twitter.com/TranscribeSI)

Connect with the Smithsonian

Smithsonian Institution: www.si.edu

On Facebook: <https://www.facebook.com/Smithsonian>

On Twitter: [@smithsonian](https://twitter.com/smithsonian)