



**Smithsonian Institution**

*Archives of American Art*

## **"Feminist Education at the Feminist Studio Workshop, The Woman's Building in Los Angeles" by Ruth Iskin, 1976**

Extracted on Aug-10-2022 01:11:08

**The Smithsonian Institution thanks all digital volunteers that transcribed and reviewed this material. Your work enriches Smithsonian collections, making them available to anyone with an interest in using them.**

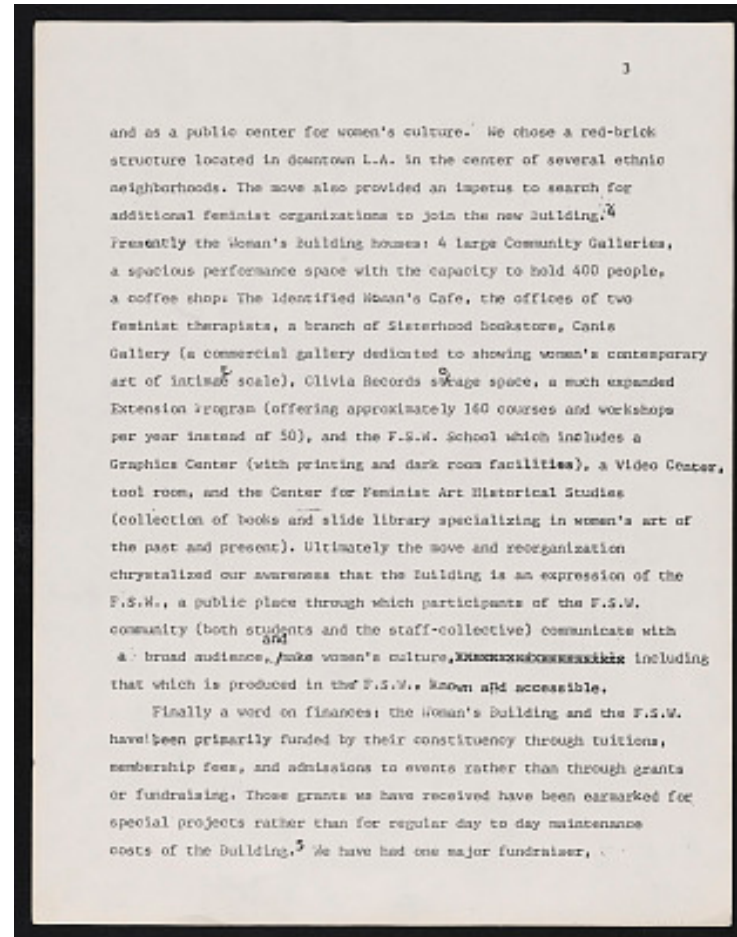
The Smithsonian Institution (the "Smithsonian") provides the content on this website ([transcription.si.edu](https://transcription.si.edu)), other Smithsonian websites, and third-party sites on which it maintains a presence ("SI Websites") in support of its mission for the "increase and diffusion of knowledge." The Smithsonian invites visitors to use its online content for personal, educational and other non-commercial purposes. By using this website, you accept and agree to abide by the [following terms](#).

- If sharing the material in personal and educational contexts, please cite the Archives of American Art as source of the content and the project title as provided at the top of the document. Include the accession number or collection name; when possible, link to the Archives of American Art website.
- If you wish to use this material in a for-profit publication, exhibition, or online project, please contact Archives of American Art or [transcribe@si.edu](mailto:transcribe@si.edu)

For more information on this project and related material, contact the Archives of American Art. [See this project](#) and other collections in the Smithsonian Transcription Center.

and as a public center for women's culture. We chose a red-brick structure located in downtown L.A. in the center of several ethnic neighborhoods. The move also provided an impetus to search for additional feminist organizations to join the new Building.<sup>4</sup> Presently the Woman's Building houses: 4 large Community Galleries, a spacious performance space with the capacity to hold 400 people, a coffee shop: The Identified Woman's Cafe, the offices of two feminist therapists, a branch of Sisterhood Bookstore, Canis Gallery (a commercial gallery dedicated to showing women's contemporary art of intimate scale), Olivia Records storage space, a much expanded Extension Program (offering approximately 160 courses and workshops per year instead of 50), and the F.S.W. School which includes a Graphics Center (with printing and dark room facilities), a Video Center, tool room, and the Center for Feminist Art Historical Studies (collection of books and slide library specializing in women's art of the past and present). Ultimately the move and reorganization crystallized our awareness that the Building is an expression of the F.S.W., a public place through which participants of the F.S.W. community (both students and the staff-collective) communicate with a broad audience, and make women's culture, ~~known and accessible~~ including that which is produced in the F.S.W., known and accessible.

Finally a word on finances; the Woman's Building and the F.S.W. have been primarily funded by their constituency through tuitions, membership fees, and admissions to events rather than through grants or fundraising. Those grants we have received have been earmarked for special projects rather than for regular day to day maintenance costs of the Building.<sup>5</sup> We have had one major fundraiser,



"Feminist Education at the Feminist Studio Workshop, The Woman's Building in Los Angeles" by Ruth Iskin, 1976  
 Transcribed and Reviewed by Digital Volunteers  
 Extracted Aug-10-2022 01:11:08



## Smithsonian Institution

*Archives of American Art*

The mission of the Smithsonian is the increase and diffusion of knowledge - shaping the future by preserving our heritage, discovering new knowledge, and sharing our resources with the world. Founded in 1846, the Smithsonian is the world's largest museum and research complex, consisting of 19 museums and galleries, the National Zoological Park, and nine research facilities. Become an active part of our mission through the Transcription Center. Together, we are discovering secrets hidden deep inside our collections that illuminate our history and our world.

Join us!

The Transcription Center: <https://transcription.si.edu>

On Facebook: <https://www.facebook.com/SmithsonianTranscriptionCenter>

On Twitter: [@TranscribeSI](https://twitter.com/TranscribeSI)

Connect with the Smithsonian

Smithsonian Institution: [www.si.edu](http://www.si.edu)

On Facebook: <https://www.facebook.com/Smithsonian>

On Twitter: [@smithsonian](https://twitter.com/smithsonian)