



Smithsonian Institution

Archives of American Art

"Feminist Education at the Feminist Studio Workshop, The Woman's Building in Los Angeles" by Ruth Iskin, 1976

Extracted on Apr-18-2024 01:48:22

The Smithsonian Institution thanks all digital volunteers that transcribed and reviewed this material. Your work enriches Smithsonian collections, making them available to anyone with an interest in using them.

The Smithsonian Institution (the "Smithsonian") provides the content on this website (transcription.si.edu), other Smithsonian websites, and third-party sites on which it maintains a presence ("SI Websites") in support of its mission for the "increase and diffusion of knowledge." The Smithsonian invites visitors to use its online content for personal, educational and other non-commercial purposes. By using this website, you accept and agree to abide by the [following terms](#).

- If sharing the material in personal and educational contexts, please cite the Archives of American Art as source of the content and the project title as provided at the top of the document. Include the accession number or collection name; when possible, link to the Archives of American Art website.
- If you wish to use this material in a for-profit publication, exhibition, or online project, please contact Archives of American Art or transcribe@si.edu

For more information on this project and related material, contact the Archives of American Art. [See this project](#) and other collections in the Smithsonian Transcription Center.

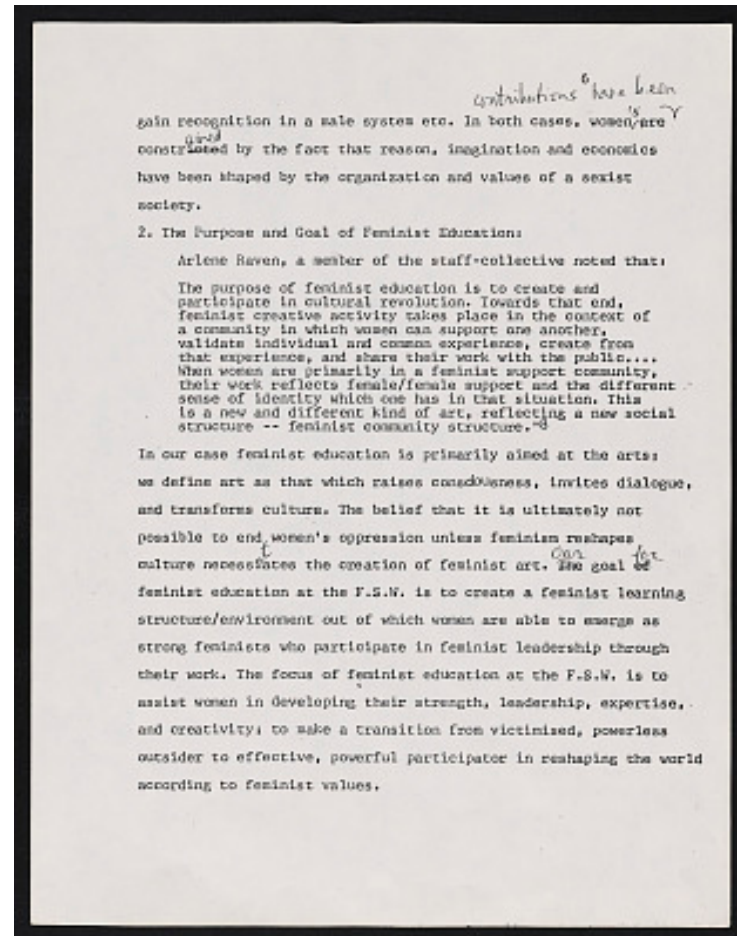
gain recognition in a male system etc. In both cases, women's contributions ~~are~~ are constricted ~~by~~ have been constrained by the fact that reason, imagination and economics have been shaped by the organization and values of a sexist society.

2. The Purpose and Goal of Feminist Education:

Arlene Raven, a member of the staff-collective noted that:

The purpose of feminist education is to create and participate in cultural revolution. Towards that end, feminist creative activity takes place in the context of a community in which women can support one another, validate individual and common experience, create from that experience, and share their work with the public.... When women are primarily in a feminist support community, their work reflects female/female support and the different sense of identity which one has in that situation. This is a new and different kind of art, reflecting a new social structure -- feminist community structure."⁸

In our case feminist education is primarily aimed at the arts; we define art as that which raises consciousness, invites dialogue, and transforms culture. The belief that it is ultimately not possible to end women's oppression unless feminism reshapes culture necessitates the creation of feminist art. ~~The~~ Our goal ~~of~~ for feminist education at the F.S.W. is to create a feminist learning structure/environment out of which women are able to emerge as strong feminists who participate in feminist leadership through their work. The focus of feminist education at the F.S.W. is to assist women in developing their strength, leadership, expertise, and creativity; to make a transition from victimized, powerless outsider to effective, powerful participator in reshaping the world according to feminist values.



"Feminist Education at the Feminist Studio Workshop, The Woman's Building in Los Angeles" by Ruth Iskin, 1976
Transcribed and Reviewed by Digital Volunteers
Extracted Apr-18-2024 01:48:22



Smithsonian Institution

Archives of American Art

The mission of the Smithsonian is the increase and diffusion of knowledge - shaping the future by preserving our heritage, discovering new knowledge, and sharing our resources with the world. Founded in 1846, the Smithsonian is the world's largest museum and research complex, consisting of 19 museums and galleries, the National Zoological Park, and nine research facilities. Become an active part of our mission through the Transcription Center. Together, we are discovering secrets hidden deep inside our collections that illuminate our history and our world.

Join us!

The Transcription Center: <https://transcription.si.edu>

On Facebook: <https://www.facebook.com/SmithsonianTranscriptionCenter>

On Twitter: [@TranscribeSI](https://twitter.com/TranscribeSI)

Connect with the Smithsonian

Smithsonian Institution: www.si.edu

On Facebook: <https://www.facebook.com/Smithsonian>

On Twitter: [@smithsonian](https://twitter.com/smithsonian)