



Smithsonian Institution

Archives of American Art

"Feminist Education at the Feminist Studio Workshop, The Woman's Building in Los Angeles" by Ruth Iskin, 1976

Extracted on Mar-29-2024 05:02:28

The Smithsonian Institution thanks all digital volunteers that transcribed and reviewed this material. Your work enriches Smithsonian collections, making them available to anyone with an interest in using them.

The Smithsonian Institution (the "Smithsonian") provides the content on this website (transcription.si.edu), other Smithsonian websites, and third-party sites on which it maintains a presence ("SI Websites") in support of its mission for the "increase and diffusion of knowledge." The Smithsonian invites visitors to use its online content for personal, educational and other non-commercial purposes. By using this website, you accept and agree to abide by the [following terms](#).

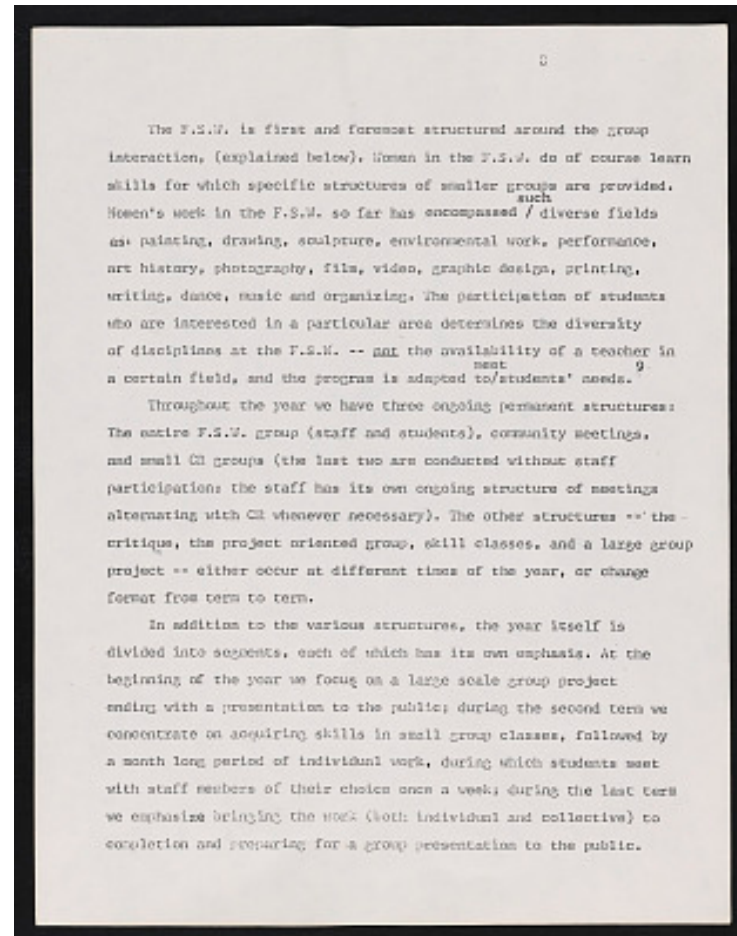
- If sharing the material in personal and educational contexts, please cite the Archives of American Art as source of the content and the project title as provided at the top of the document. Include the accession number or collection name; when possible, link to the Archives of American Art website.
- If you wish to use this material in a for-profit publication, exhibition, or online project, please contact Archives of American Art or transcribe@si.edu

For more information on this project and related material, contact the Archives of American Art. [See this project](#) and other collections in the Smithsonian Transcription Center.

The F.S.W. is first and foremost structured around the group interaction, (explained below). Women in the F.S.W. do of course learn skills for which specific structures of smaller groups are provided. Women's work in the F.S.W. so far has encompassed such diverse fields as: painting, drawing, sculpture, environmental work, performance, art history, photography, film, video, graphic design, printing, writing, dance, music and organizing. The participation of students who are interested in a particular area determines the diversity of disciplines at the F.S.W. -- not the availability of a teacher in a certain field, and the program is adapted to meet students' needs. 9

Throughout the year we have three ongoing permanent structures: The entire F.S.W. group (staff and students), community meetings, and small CR groups (the last two are conducted without staff participation; the staff has its own ongoing structure of meetings alternating with CR whenever necessary). The other structures -- the critique, the project oriented group, skill classes, and a large group project -- either occur at different times of the year, or change format from term to term.

In addition to the various structures, the year itself is divided into segments, each of which has its own emphasis. At the beginning of the year we focus on a large scale group project ending with a presentation to the public; during the second term we concentrate on acquiring skills in small group classes, followed by a month long period of individual work, during which students meet with staff members of their choice once a week; during the last term we emphasize bringing the work (both individual and collective) to completion and preparing for a group presentation to the public.



"Feminist Education at the Feminist Studio Workshop, The Woman's Building in Los Angeles" by Ruth Iskin, 1976
Transcribed and Reviewed by Digital Volunteers
Extracted Mar-29-2024 05:02:28



Smithsonian Institution

Archives of American Art

The mission of the Smithsonian is the increase and diffusion of knowledge - shaping the future by preserving our heritage, discovering new knowledge, and sharing our resources with the world. Founded in 1846, the Smithsonian is the world's largest museum and research complex, consisting of 19 museums and galleries, the National Zoological Park, and nine research facilities. Become an active part of our mission through the Transcription Center. Together, we are discovering secrets hidden deep inside our collections that illuminate our history and our world.

Join us!

The Transcription Center: <https://transcription.si.edu>

On Facebook: <https://www.facebook.com/SmithsonianTranscriptionCenter>

On Twitter: [@TranscribeSI](https://twitter.com/TranscribeSI)

Connect with the Smithsonian

Smithsonian Institution: www.si.edu

On Facebook: <https://www.facebook.com/Smithsonian>

On Twitter: [@smithsonian](https://twitter.com/smithsonian)