



Smithsonian Institution

Smithsonian National Air and Space Museum Archives

Harold E. Morehouse Flying Pioneers Biographies Collection - Brock, William S.

Extracted on Apr-18-2024 10:04:28

The Smithsonian Institution thanks all digital volunteers that transcribed and reviewed this material. Your work enriches Smithsonian collections, making them available to anyone with an interest in using them.

The Smithsonian Institution (the "Smithsonian") provides the content on this website (transcription.si.edu), other Smithsonian websites, and third-party sites on which it maintains a presence ("SI Websites") in support of its mission for the "increase and diffusion of knowledge." The Smithsonian invites visitors to use its online content for personal, educational and other non-commercial purposes. By using this website, you accept and agree to abide by the [following terms](#).

- If sharing the material in personal and educational contexts, please cite the Smithsonian National Air and Space Museum Archives as source of the content and the project title as provided at the top of the document. Include the accession number or collection name; when possible, link to the Smithsonian National Air and Space Museum Archives website.
- If you wish to use this material in a for-profit publication, exhibition, or online project, please contact Smithsonian National Air and Space Museum Archives or transcribe@si.edu

For more information on this project and related material, contact the Smithsonian National Air and Space Museum Archives. [See this project](#) and other collections in the Smithsonian Transcription Center.

planned to go into aviation in a big way. Two hangars were leased at the Detroit City Airport and arrangements made for a Michigan Bellanca dealership. Later that year they were awarded the Harmon Trophy for their noteworthy world flight.

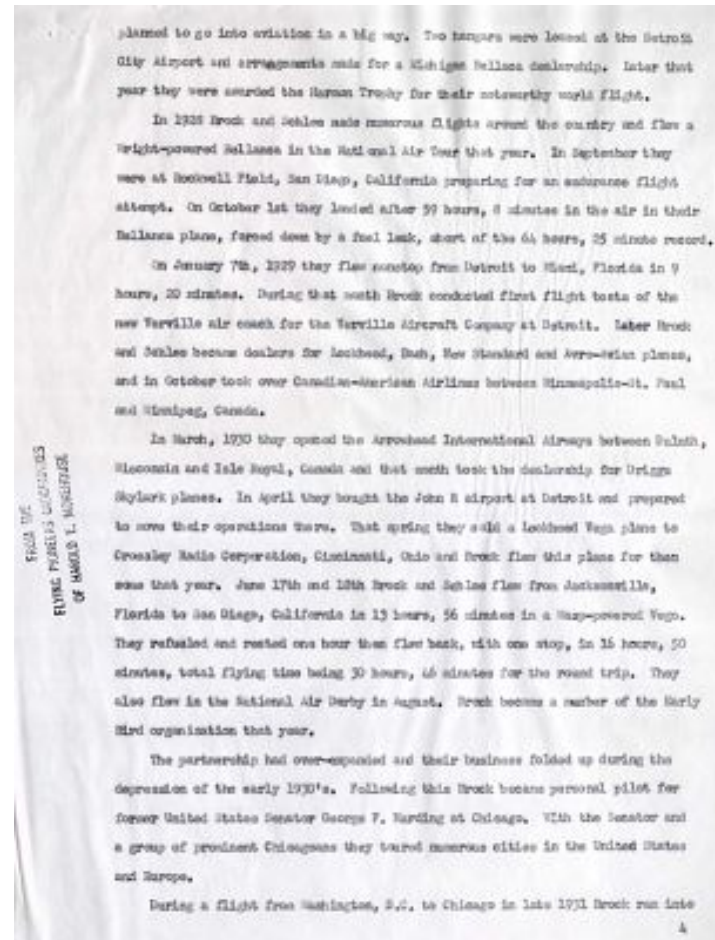
In 1928 Brock and Schlee made numerous flights around the country and flew a Wright-powered Bellanca in the National Air Tour that year. In September they were at Rockwell Field, San Diego, California preparing for an endurance flight attempt. On October 1st they landed after 59 hours, 8 minutes in the air in their Bellanca plane, forced down by a fuel leak, short of the 64 hours, 25 minute record.

On January 7th, 1929 they flew nonstop from Detroit to Miami, Florida in 9 hours, 20 minutes. During that month Brock conducted first flight test of the new Verville air coach for the Verville Aircraft Company at Detroit. Later Brock and Schlee became dealers for Lockheed, Bach, New Standard and Avro-Avian planes, and in October took over Canadian-American Airlines between Minneapolis-St. Paul and Winnipeg, Canada.

In March, 1930 they opened the Arrowhead International Airways between Duluth Wisconsin and Isle Royal Canada and that month took the dealership for Driggs Skylark planes. In April they bought the John R airport at Detroit and prepared to move their operations there. That spring they sold a Lockheed Vega plane to Crossley Radio Corporation, Cincinnati, Ohio and Brock flew this plane for them some that year. June 17th and 18th Brock and Schlee flew from Jacksonville, Florida to San Diego, California in 13 hours, 46 minutes for the round trip. They also flew in the national Air Derby in August. Brock became a member of the Early Bird organization that year.

The partnership had over-expanded and their business folded up during the depression of the early 1930's. Following this Brock became personal pilot for former United States Senator George F. Harding at Chicago. With the Senator and a group of prominent Chicagoans they toured numerous cities in the United States and Europe.

During a flight from Washington, D.C. to Chicago in the late 1931 Brock ran into



Harold E. Morehouse Flying Pioneers Biographies Collection - Brock, William S.
Transcribed and Reviewed by Digital Volunteers
Extracted Apr-18-2024 10:04:28



Smithsonian Institution

Smithsonian National Air and Space Museum Archives

The mission of the Smithsonian is the increase and diffusion of knowledge - shaping the future by preserving our heritage, discovering new knowledge, and sharing our resources with the world. Founded in 1846, the Smithsonian is the world's largest museum and research complex, consisting of 19 museums and galleries, the National Zoological Park, and nine research facilities. Become an active part of our mission through the Transcription Center. Together, we are discovering secrets hidden deep inside our collections that illuminate our history and our world.

Join us!

The Transcription Center: <https://transcription.si.edu>

On Facebook: <https://www.facebook.com/SmithsonianTranscriptionCenter>

On Twitter: [@TranscribeSI](https://twitter.com/TranscribeSI)

Connect with the Smithsonian

Smithsonian Institution: www.si.edu

On Facebook: <https://www.facebook.com/Smithsonian>

On Twitter: [@smithsonian](https://twitter.com/smithsonian)