



Smithsonian Institution

Smithsonian National Air and Space Museum Archives

Harold E. Morehouse Flying Pioneers Biographies Collection - Cessna, Clyde V.

Extracted on Apr-24-2024 06:11:37

The Smithsonian Institution thanks all digital volunteers that transcribed and reviewed this material. Your work enriches Smithsonian collections, making them available to anyone with an interest in using them.

The Smithsonian Institution (the "Smithsonian") provides the content on this website (transcription.si.edu), other Smithsonian websites, and third-party sites on which it maintains a presence ("SI Websites") in support of its mission for the "increase and diffusion of knowledge." The Smithsonian invites visitors to use its online content for personal, educational and other non-commercial purposes. By using this website, you accept and agree to abide by the [following terms](#).

- If sharing the material in personal and educational contexts, please cite the Smithsonian National Air and Space Museum Archives as source of the content and the project title as provided at the top of the document. Include the accession number or collection name; when possible, link to the Smithsonian National Air and Space Museum Archives website.
- If you wish to use this material in a for-profit publication, exhibition, or online project, please contact Smithsonian National Air and Space Museum Archives or transcribe@si.edu

For more information on this project and related material, contact the Smithsonian National Air and Space Museum Archives. [See this project](#) and other collections in the Smithsonian Transcription Center.

carnivals through Oklahoma and Kansas.

On his 1914 machine he used a windshield for the first time. Landing gears were a problem. Making landings and take-offs from pastures and rough ground were severe, and Cessna experimented for some time before he devised a gear to stand the punishment. His original Elbridge engine was used in the 1915 plane and that summer he exhibited at Wichita, the first appearance of a monoplane there.

In the fall of 1916 Cessna took over one of the buildings of the former Jones Motor Car Company in Wichita, and that winter built the first two aeroplanes ever made in that city. Called the Clyde V. Cessna Aeroplane Factory, he employed five men. Both planes were monoplanes embodying some of his new ideas, the second one, called the "Comet", being his favorite. It incorporated his first attempt to enclose the cockpit by a type of extended coupe-like windshield. Built during the spring of 1917 Cessna was very proud of this plane and it performed exceedingly well, showing a speed of 124 M.P.H. On July 5th he flew the Comet from Blackwell, Oklahoma to Wichita, Kansas, 76 miles, in 36 minutes. Early in 1917 Cessna was booked for an active exhibition season but the entry of America into World War I brought exhibition work to a standstill, so all his planes were returned to Rago, Kansas where he operated his farm during the war.

Aviation went through a period of distinct change after the war. There was an excess of aviators who wanted to continue flying and had to find some way to make a living. Flying equipment could be purchased from military disposal at giveaway prices. Then, so-called barnstorming put an end to the exhibition game, aeroplanes appeared everywhere and plane rides were available at nominal prices. Throughout this period air-minded Cessna bided his time and continued farming. He never lost interest, but the kind of aviation game he had practiced was over. In Wichita a company was formed to do barnstorming, carry passengers and make charter flights.

In 1920 E. M. Laird formed the Wichita Aeroplane Company to build planes,

[[page number]]

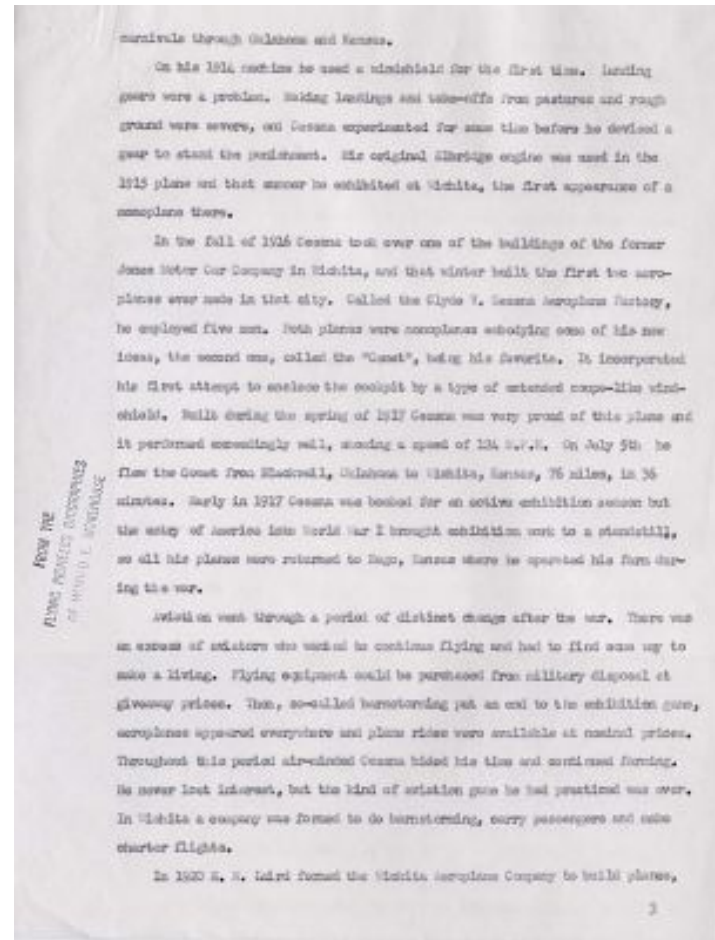
3

[[page number]]

[[left margin]]

FROM THE FLYING PIONEERS BIOGRAPHIES OF HAROLD E. MOREHOUSE

[[/left margin]]



Harold E. Morehouse Flying Pioneers Biographies Collection - Cessna, Clyde V.
Transcribed and Reviewed by Digital Volunteers
Extracted Apr-24-2024 06:11:37



Smithsonian Institution

Smithsonian National Air and Space Museum Archives

The mission of the Smithsonian is the increase and diffusion of knowledge - shaping the future by preserving our heritage, discovering new knowledge, and sharing our resources with the world. Founded in 1846, the Smithsonian is the world's largest museum and research complex, consisting of 19 museums and galleries, the National Zoological Park, and nine research facilities. Become an active part of our mission through the Transcription Center. Together, we are discovering secrets hidden deep inside our collections that illuminate our history and our world.

Join us!

The Transcription Center: <https://transcription.si.edu>

On Facebook: <https://www.facebook.com/SmithsonianTranscriptionCenter>

On Twitter: [@TranscribeSI](https://twitter.com/TranscribeSI)

Connect with the Smithsonian

Smithsonian Institution: www.si.edu

On Facebook: <https://www.facebook.com/Smithsonian>

On Twitter: [@smithsonian](https://twitter.com/smithsonian)