



Smithsonian Institution

Smithsonian National Air and Space Museum Archives

Harold E. Morehouse Flying Pioneers Biographies Collection - Longren, Alvin K.

Extracted on Apr-23-2024 09:29:23

The Smithsonian Institution thanks all digital volunteers that transcribed and reviewed this material. Your work enriches Smithsonian collections, making them available to anyone with an interest in using them.

The Smithsonian Institution (the "Smithsonian") provides the content on this website (transcription.si.edu), other Smithsonian websites, and third-party sites on which it maintains a presence ("SI Websites") in support of its mission for the "increase and diffusion of knowledge." The Smithsonian invites visitors to use its online content for personal, educational and other non-commercial purposes. By using this website, you accept and agree to abide by the [following terms](#).

- If sharing the material in personal and educational contexts, please cite the Smithsonian National Air and Space Museum Archives as source of the content and the project title as provided at the top of the document. Include the accession number or collection name; when possible, link to the Smithsonian National Air and Space Museum Archives website.
- If you wish to use this material in a for-profit publication, exhibition, or online project, please contact Smithsonian National Air and Space Museum Archives or transcribe@si.edu

For more information on this project and related material, contact the Smithsonian National Air and Space Museum Archives. [See this project](#) and other collections in the Smithsonian Transcription Center.

over and rolled, damaging the plane and propeller, but he was not injured.
During World War I Longren served in aircraft inspection work at McCook Field, Dayton, Ohio.

In 1919 he re-established the Longren Aircraft Corporation at Topeka, when in 1921 he brought out the Model AK training biplane. It was of unique construction, having a moulded, streamlined vulcanized fibre fuselage, reinforced internally by ash stringers and light laminated ribs. It had folding wings for easy storage and was powered by a 60 H.P. Anzani engine. At that time he had own flying field and hangar adjacent to his factory and was operating two planes for training and passenger carrying.

In 1923 Longren received an order for and built three fibre fuselage planes for the Navy Department. In 1924 the Longren Aircraft Corporation was dissolved.

When the Spartan Aircraft Company was formed at Tulsa, Oklahoma in January, 1928 Longren became Vice President of the new firm. There he assisted in the design and development of the well known Spartan biplanes.

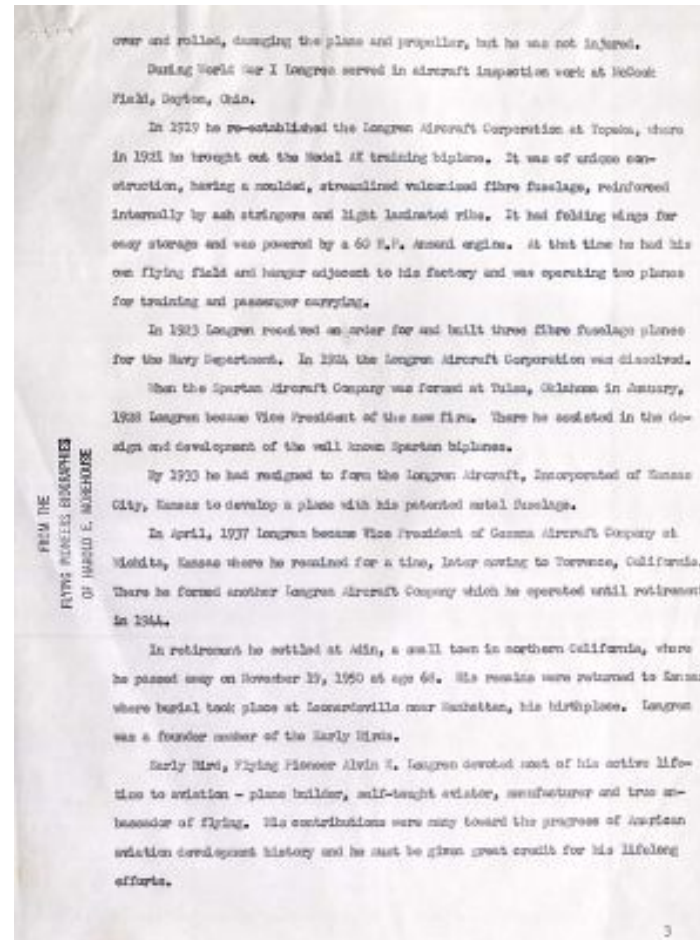
By 1933 he had resigned to form the Longren Aircraft, Incorporated of Kansas City, Kansas to develop a plane with his patented metal fuselage.

In April, 1937 Longren became Vice President of Cessna Aircraft Company at Wichita, Kansas where he remained for a time, later moving to Torrance, California. There he formed another Longren Aircraft Company which he operated until retirement in 1944.

In retirement he settle at Adin, a small town in northern California, where he passed away on November 19, 1950 at age 68. His remains were returned to Kansas where burial took place at Leonardsville near Manhattan, his birthplace. Longren was a founder member of Early Birds.

Early Bird, Flying Pioneer Alvin K. Longren devoted most of his active lifetime to aviation - plane builder, self-taught aviator, manufacturer and true ambassador of flying. His contributions were many toward the progress of American aviation development history and he must be given great credit for his lifelong efforts.

[[margin]] [[stamp]] FROM THE FLYING PIONEERS BIOGRAPHIES OF HAROLD E. MOREHOUSE [[/stamp]][[/margin]]



Harold E. Morehouse Flying Pioneers Biographies Collection - Longren, Alvin K.
Transcribed and Reviewed by Digital Volunteers
Extracted Apr-23-2024 09:29:23



Smithsonian Institution

Smithsonian National Air and Space Museum Archives

The mission of the Smithsonian is the increase and diffusion of knowledge - shaping the future by preserving our heritage, discovering new knowledge, and sharing our resources with the world. Founded in 1846, the Smithsonian is the world's largest museum and research complex, consisting of 19 museums and galleries, the National Zoological Park, and nine research facilities. Become an active part of our mission through the Transcription Center. Together, we are discovering secrets hidden deep inside our collections that illuminate our history and our world.

Join us!

The Transcription Center: <https://transcription.si.edu>

On Facebook: <https://www.facebook.com/SmithsonianTranscriptionCenter>

On Twitter: [@TranscribeSI](https://twitter.com/TranscribeSI)

Connect with the Smithsonian

Smithsonian Institution: www.si.edu

On Facebook: <https://www.facebook.com/Smithsonian>

On Twitter: [@smithsonian](https://twitter.com/smithsonian)