



Smithsonian Institution

Archives of American Gardens

Gertrude Farrington's Diaries, 1983-1987

Extracted on Apr-19-2024 08:49:41

The Smithsonian Institution thanks all digital volunteers that transcribed and reviewed this material. Your work enriches Smithsonian collections, making them available to anyone with an interest in using them.

The Smithsonian Institution (the "Smithsonian") provides the content on this website (transcription.si.edu), other Smithsonian websites, and third-party sites on which it maintains a presence ("SI Websites") in support of its mission for the "increase and diffusion of knowledge." The Smithsonian invites visitors to use its online content for personal, educational and other non-commercial purposes. By using this website, you accept and agree to abide by the [following terms](#).

- If sharing the material in personal and educational contexts, please cite the Archives of American Gardens as source of the content and the project title as provided at the top of the document. Include the accession number or collection name; when possible, link to the Archives of American Gardens website.
- If you wish to use this material in a for-profit publication, exhibition, or online project, please contact Archives of American Gardens or transcribe@si.edu

For more information on this project and related material, contact the Archives of American Gardens. [See this project](#) and other collections in the Smithsonian Transcription Center.

May 11

1983 - Wednesday - 34° at 6AM - Cloudy - became mostly sunny but cold and windy.
Took 7:24 train from Brewster - NYC at 9 AM - Saw Gail - Anne - Mr Long - to White Plains on 10:48 where Wes met me. He had come thru Ridgefield to buy liquor. To Sassafra where Ed Teelaw - Lou [[Stroebl]] - Vernon Schneider - Bob and Doris Dorsch - Mary and Ray Brady were our guests for luncheon - To Nobel's Nursery - bought 2 Tiarella cordifolia and couple for Rock Garden - home to plant them. Grouse's log house delivered - lots of logs. To 7:30 PM Mass

1984 - Friday - 45° at 6 AM - Sunny - breezy - high wind late afternoon. Rose Breasted Grosbeak at feeder. I dug plants from Helene Merrick's garden (helped Teri) and worked alone at Ada Franken's - taking plants to Ballard - home at 1 pm. Hollandia planted Linden tree - left 2 Rhododendron, 3 Stokes Ilex - White Pine for us to plant. Wes turned over compost - redid upper planting bed - started backfill of new wall.

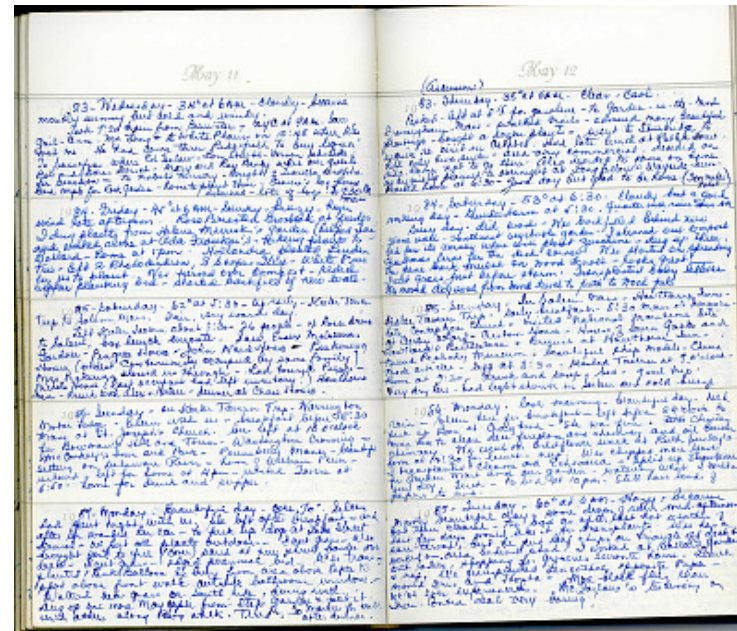
1985 - Saturday - 62° at 5:30 - Up early - Keeler Tavern trip to Salem, Mass. Fair, very warm day.
Left Keeler Tavern about 8:30 - 26 people - 4 hour drive to Salem, box lunch enroute. Saw Essex Museum, Gardner-Pingree House - John Ward House - Pickering House (oldest continuously occupied by same family) Mrs Pickering showed us through - had toured Pierce-Nichols House (last occupant had left inventory?) Hawthorne Inn - drink with Alex & Helen - dinner at Chase House.

1986 - Sunday - on Keeler Tavern Trip - Warrington Motor Lodge - Eileen with us - breakfast before 8:30
Mass at St. Joseph's Church, bus left at 10 o'clock for Bowman's Hill and Tower - Washington Crossing - McConkey's Inn and Park - Pennsbury Manor - beautiful setting on Delaware River - home of William Penn - restored - left for home at 4 pm - reached Tavern at 6:50 - home for drink and supper.

1987 - Monday - Beautiful day - over 70°. Eileen had spent night with us. She left after breakfast - and after we washed her car - to pick up dog at Lake Street Kennel - we put all plants outdoors - I cut grass - Wes brought soil to fill (cover) sand at new shrub border over deck - I cut grass - edged perennial bed - Wes transplanted 1 Pink Balloon Exbury from area above Pipes to spot above front walk outside bathroom window - Watered new grass on South Side, doing well. Dug up one more Mayapple from Step Garden & put it with others along Bog walk. Tired. To Marcus for milk after dinner.

May 12

1983 - (Ascension) - Thursday - 35° at 6 AM - Clear - cool.
Packed - left at 8:15 for gasoline - to Garden-in-the-Woods, Framingham, Mass - walked trails - admired many beautiful plantings - bought a dozen plants - went to Sturbridge to inquire re visit in October. Had late lunch at Public House - had only two suites - area very commercial - decided on ride home not to go there. Also decided to come on home as originally planned to overnight at Longfellow's Wayside Inn. Reached home at 6:30 - good day but glad to be home.



(300 miles total)

1984 - Saturday - 53° at 6:30 - Cloudy but a good working day - thunderstorm at 5:30. Quarter inch rain Sun. AM.
Busy day - did wash - Wes backfilled behind new stone wall - southeast vegetable garden - I cleaned out compost bed for its corner where will plant zucchini - dug up three Christmas ferns for the deck corner. Wes started on spreading the pine bark mulch on Wood Knoll - looks great. I cut grass just before storm. Transplanted baby lettuce. Wes moved dogwood from Wood Knoll to path to Wood pile.

1985 - Saturday - In Salem, Mass. - Hawthorne Inn - Keeler Tavern Trip - early breakfast - 8:30 Mass at Immaculate Conception Church - visited National Maritime Site at Derby Wharf - Custom House - House of Seven Gables and Hawthorne's Birthplace - Brunch at Hawthorne Inn - toured Peabody Museum - beautiful ship models - China trade articles - left at 3:30 - reached Tavern at 7 o'clock - Home at 7:30 - drink and soup - bed - good trip.
Very dry here - had light shower in Salem and cold breeze.

1986 - Monday. Cool morning - beautiful day - need rain - Eileen here for breakfast - left before 8 o'clock to pick up Boo at Craighead - she was fine. ~~Wes~~ ~~Chimney~~ man here to clean den fireplace and chimney and oil burner chimney. We went on Wildflower Walk at Ruth Sunley's - home at 12:30 for lunch - nap. Wes chipped more leaves. I transplanted Cleome and Echeveria - split up strawberries for Garden Mart and our garden - watering what I could - very dry. Tired - to bed at 1 pm - Still have loads of papers to read.

1987 - Tuesday - 60° at 6 AM - Hazy, became mostly beautiful day - some drops of rain mid-afternoon but then cleared - too bad as after last hot weather of last few days would like it for transplants. Wes has a sore throat but he put leaf chips on triangle off deck & worked on area behind shed. I worked at Ballard Garden with ladies, shopping for groceries enroute home. Lunch & nap. We transplanted Leucothoe opposite Pipes - moved Iris and Hosta = More black flies than we've ever experienced. McFarlane's testimony on Iran Contra deal very boring!

Gertrude Farrington's Diaries, 1983-1987
Transcribed and Reviewed by Digital Volunteers
Approved by Smithsonian Staff
Extracted Apr-19-2024 08:49:41



Smithsonian Institution

Archives of American Gardens

The mission of the Smithsonian is the increase and diffusion of knowledge - shaping the future by preserving our heritage, discovering new knowledge, and sharing our resources with the world. Founded in 1846, the Smithsonian is the world's largest museum and research complex, consisting of 19 museums and galleries, the National Zoological Park, and nine research facilities. Become an active part of our mission through the Transcription Center. Together, we are discovering secrets hidden deep inside our collections that illuminate our history and our world.

Join us!

The Transcription Center: <https://transcription.si.edu>

On Facebook: <https://www.facebook.com/SmithsonianTranscriptionCenter>

On Twitter: [@TranscribeSI](https://twitter.com/TranscribeSI)

Connect with the Smithsonian

Smithsonian Institution: www.si.edu

On Facebook: <https://www.facebook.com/Smithsonian>

On Twitter: [@smithsonian](https://twitter.com/smithsonian)