



Smithsonian Institution

Archives of American Gardens

Gertrude Farrington's Diaries, 1988-1992

Extracted on Mar-29-2024 08:02:22

The Smithsonian Institution thanks all digital volunteers that transcribed and reviewed this material. Your work enriches Smithsonian collections, making them available to anyone with an interest in using them.

The Smithsonian Institution (the "Smithsonian") provides the content on this website (transcription.si.edu), other Smithsonian websites, and third-party sites on which it maintains a presence ("SI Websites") in support of its mission for the "increase and diffusion of knowledge." The Smithsonian invites visitors to use its online content for personal, educational and other non-commercial purposes. By using this website, you accept and agree to abide by the [following terms](#).

- If sharing the material in personal and educational contexts, please cite the Archives of American Gardens as source of the content and the project title as provided at the top of the document. Include the accession number or collection name; when possible, link to the Archives of American Gardens website.
- If you wish to use this material in a for-profit publication, exhibition, or online project, please contact Archives of American Gardens or transcribe@si.edu

For more information on this project and related material, contact the Archives of American Gardens. [See this project](#) and other collections in the Smithsonian Transcription Center.

May 29

1988 - Sunday - 56° at 6 AM - Beautiful morning. Eileen's white Azalea and Lavender Rhododendron out - Warm day. To 8 o'clock Mass. To Eileen's at 9:30 - Took her shopping at Grand Union - washed her back - did a little washing (drying - she had washed clothes) planted geraniums - moved some pansies - admired dogs who had been trimmed - Wes cooked steaks had dinner - washed dishes - home at 5 pm - Watered a few plants - walked about - cooler here

1989 - Monday - Decoration Day. 46° at 6 AM - Fair - beautiful day. No mass. Father away. Very relaxing day for us. Cut the spent blossoms from one Rhododendron Carolinum - took us an hour - Wes trimmed top of hemlock around Garden Room. I moved Miscanthus grass from Wood Knoll slope to perennial garden in front of large allium - moved other plants to do it. Luncheon on deck. To Tempanelli's at 6:30 for dinner.

1990 - Tuesday - 52° at 6 AM - cloudy - N.Y. Botanical Garden Course on Shrubs - turned out to be on Perennial Foliage as too much rain to go out in the Garden. Left at 8. - picked up Eileen - loads of traffic and horrendous rain. Our own sandwich lunch - course over at 2:30 - at Eileen's picked up the Astilbe she was giving us and a quart of honey from Jean & Sue. Glad to be home as rain & traffic terrible - car aquaplaned on Parkway - scary.

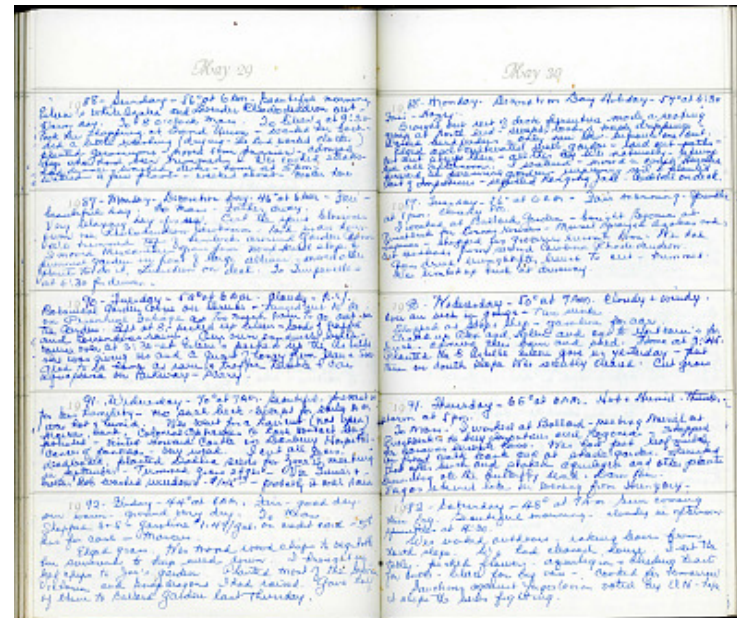
1991. Wednesday - 70° at 7 AM. Beautiful - forecast is for less humidity - no such luck - except for early AM was hot & humid. Wes went for a haircut (not open) Marcus, bank, Colonial Opticians to have contact lens polished - visited Howard Castle in Danbury Hospital - cancer of pancreas - very weak. I cut all grass, deadheaded, planted Dahlia seeds for Zone II meeting in September - Trimmed grass edges - Vee Grenier & brother Bob washed windows - \$145.00 - probably it will rain

1992 - Friday - 44° at 6 AM. Fair - good day - sun warm - ground very dry. To Mass Shopped S & S - gasoline \$1.49/gal. on credit card - 5¢ less for cash - Marcus. Edged grass. Wes moved wood chips to vegetable fin surround to keep weeds down. I brought up leaf chips to Joe's garden. Planted most of the Salvia Victoria and Snapdragons I had raised. Gave half of them to Ballard Garden last Thursday.

May 30

1988 - Monday. Decoration Day Holiday - 57° at 6:30 Fair - Hazy. Brought out rest of deck furniture - made seating group at North end - swept loads of maple drippings - Washed bird feeders - only new low-entrance one out. Edged and cultivated well garden - laid out paths - cut out stump there - all this by Wes naturally - stump took all afternoon. I watered - moved a couple Heuchera forward in perennial garden - improving soil - planted last of Impatiens - repotted Ranging Jade. Cocktail on deck.

1989. Tuesday - 56° at 6 AM - Fair morning - sprinkle at 1 pm - cloudy PM. I worked at Ballard Garden - bought Begonia at Pinchbeck for Cornus Kousas - Muriel sprayed Azaleas and Lupines - shopped for groceries



enroute home. Wes had cut deadheads from second Carolina Rhododendron. Grass dried enough after lunch to cut - trimmed. Wes climbed up beech at driveway.

1990 - Wednesday - 50° at 7 AM - Cloudy & windy - over an inch in gauge - two inches. Shopped at Stop & Shop - gasoline for car. Picked up Alex and Helen and out to Hartcorn's for lunch - admired their barn and shed. Home at 3:45. Planted the 5 Astilbe Eileen gave us yesterday - put them on South slope Wes recently cleared. Cut grass

1991. Thursday - 65° at 6 AM - Hot & Humid - thunderstorm at 5 pm. To Mass. I worked at Ballard - meeting Muriel at Pinchbeck's to buy Impatiens and Begonias - Stopped for bananas enroute home. Wes had put leaf mulch on front walk bank and at shade garden. Finished that after lunch and staked aquilegia and other plants Groundhog ate the butterfly weed. Darn him. Vargas returned late in evening from Hungary.

1992 - Saturday - 48° at 7 AM. Sun coming thru fog. Beautiful morning - cloudy in afternoon - sprinkles at 4:30. Wes worked outdoors - raking leaves from North slope. We had cleaned house. I set the table - picked flowers - aquilegia & bleeding hearts for table - lilacs for big vase - cooked for tomorrow
Sanctions against Yugoslavia voted by UN - hope it stops the Serbs fighting.

Gertrude Farrington's Diaries, 1988-1992
Transcribed and Reviewed by Digital Volunteers
Approved by Smithsonian Staff
Extracted Mar-29-2024 08:02:22



Smithsonian Institution

Archives of American Gardens

The mission of the Smithsonian is the increase and diffusion of knowledge - shaping the future by preserving our heritage, discovering new knowledge, and sharing our resources with the world. Founded in 1846, the Smithsonian is the world's largest museum and research complex, consisting of 19 museums and galleries, the National Zoological Park, and nine research facilities. Become an active part of our mission through the Transcription Center. Together, we are discovering secrets hidden deep inside our collections that illuminate our history and our world.

Join us!

The Transcription Center: <https://transcription.si.edu>

On Facebook: <https://www.facebook.com/SmithsonianTranscriptionCenter>

On Twitter: [@TranscribeSI](https://twitter.com/TranscribeSI)

Connect with the Smithsonian

Smithsonian Institution: www.si.edu

On Facebook: <https://www.facebook.com/Smithsonian>

On Twitter: [@smithsonian](https://twitter.com/smithsonian)