



Smithsonian Institution

Smithsonian Institution Archives

USNM Curators Annual Reports: Department of Insects, 1895-1896

Extracted on Apr-17-2024 02:19:55

The Smithsonian Institution thanks all digital volunteers that transcribed and reviewed this material. Your work enriches Smithsonian collections, making them available to anyone with an interest in using them.

The Smithsonian Institution (the "Smithsonian") provides the content on this website (transcription.si.edu), other Smithsonian websites, and third-party sites on which it maintains a presence ("SI Websites") in support of its mission for the "increase and diffusion of knowledge." The Smithsonian invites visitors to use its online content for personal, educational and other non-commercial purposes. By using this website, you accept and agree to abide by the [following terms](#).

- If sharing the material in personal and educational contexts, please cite the Smithsonian Institution Archives as source of the content and the project title as provided at the top of the document. Include the accession number or collection name; when possible, link to the Smithsonian Institution Archives website.
- If you wish to use this material in a for-profit publication, exhibition, or online project, please contact Smithsonian Institution Archives or transcribe@si.edu

For more information on this project and related material, contact the Smithsonian Institution Archives. [See this project](#) and other collections in the Smithsonian Transcription Center.

10-5

A consideration of *Sciara tritici*, n.sp. and of its probable damage to young wheat plants.

D.W. Coquillett. ~~[[/strickethrough]]~~ ~~[[/strickethrough]]~~ Diptera of Florida~~[[/strickethrough]]~~ " ~~[[/strickethrough]]~~.

Proc. Acad. Nat. Sci~~[[/strickethrough]]~~ ences of~~[[/strickethrough]]~~ Phila~~[[/strickethrough]]~~ delphia~~[[/strickethrough]]~~, ~~[[/strickethrough]]~~ xxx Pa.~~[[/strickethrough]]~~, 1895. (Issued in

September)~~[[/strickethrough]]~~. ~~[[/strickethrough]]~~ Describes ~~[[/strickethrough]]~~ three ~~[[/strickethrough]]~~ 3 new genera and ~~[[/strickethrough]]~~ eighteen ~~[[/strickethrough]]~~ 18 new species; two of the latter are founded partly on specimens in the National Museum.

D.W. Coquillett. "New Culicidae from North America". Canadian Entomologist, Feb~~[[/strickethrough]]~~ruary~~[[/strickethrough]]~~, 1896.

Describes ~~[[/strickethrough]]~~ xxx~~[[/strickethrough]]~~x ~~[[/strickethrough]]~~ xxx~~[[/strickethrough]]~~ ~~[[/strickethrough]]~~ three~~[[/strickethrough]]~~ 3 new species, two of which are based on specimens in the National Museum. (Insert slip)

Martin L. Linell. Description of a new species of Golden beetle from Costa Rica.

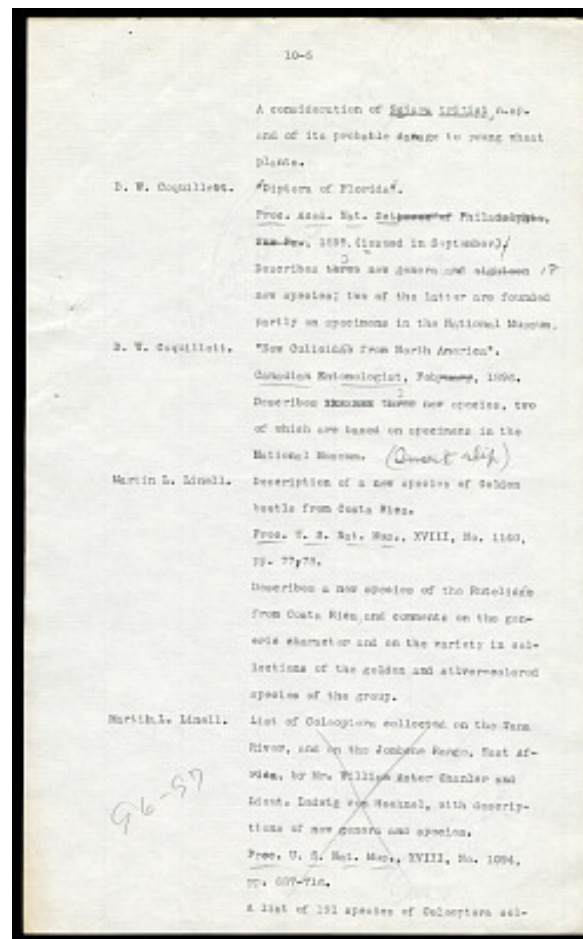
Proc. U.S. Nat. Mus., XVIII, No. 1140, pp. 77,78.

Describes a new species of the Rutelidae from Costa Rica, and comments on the generic character and on the variety in collections of the golden and silver-colored species of the group.

Martin L. Linell. ~~[[left margin]]~~ 96-97 ~~[[left margin]]~~ ~~[[/strickethrough]]~~ List of Coleoptera collected on the Tana River, and on the Jombene Range, East Africa, by Mr. William Astor Chanler and Lieut. Ludwig von Hoehnel, with descriptions of new genera and species.

Proc. U. S. Nat. Mus., XVIII, No. 1094, pp. 687-716.~~[[/strickethrough]]~~

A list of 191 species of Coleoptera col-



USNM Curators Annual Reports: Department of Insects, 1895-1896
Transcribed and Reviewed by Digital Volunteers
Extracted Apr-17-2024 02:19:55



Smithsonian Institution

Smithsonian Institution Archives

The mission of the Smithsonian is the increase and diffusion of knowledge - shaping the future by preserving our heritage, discovering new knowledge, and sharing our resources with the world. Founded in 1846, the Smithsonian is the world's largest museum and research complex, consisting of 19 museums and galleries, the National Zoological Park, and nine research facilities. Become an active part of our mission through the Transcription Center. Together, we are discovering secrets hidden deep inside our collections that illuminate our history and our world.

Join us!

The Transcription Center: <https://transcription.si.edu>

On Facebook: <https://www.facebook.com/SmithsonianTranscriptionCenter>

On Twitter: [@TranscribeSI](https://twitter.com/TranscribeSI)

Connect with the Smithsonian

Smithsonian Institution: www.si.edu

On Facebook: <https://www.facebook.com/Smithsonian>

On Twitter: [@smithsonian](https://twitter.com/smithsonian)