



Smithsonian Institution

National Museum of the American Indian Archives Center

Museum of the American Indian, Heye Foundation - George Pepper: Correspondence, Jan-Feb 1903

Extracted on Apr-02-2023 02:09:08

The Smithsonian Institution thanks all digital volunteers that transcribed and reviewed this material. Your work enriches Smithsonian collections, making them available to anyone with an interest in using them.

The Smithsonian Institution (the "Smithsonian") provides the content on this website (transcription.si.edu), other Smithsonian websites, and third-party sites on which it maintains a presence ("SI Websites") in support of its mission for the "increase and diffusion of knowledge." The Smithsonian invites visitors to use its online content for personal, educational and other non-commercial purposes. By using this website, you accept and agree to abide by the [following terms](#).

- If sharing the material in personal and educational contexts, please cite the National Museum of the American Indian Archives Center as source of the content and the project title as provided at the top of the document. Include the accession number or collection name; when possible, link to the National Museum of the American Indian Archives Center website.
- If you wish to use this material in a for-profit publication, exhibition, or online project, please contact National Museum of the American Indian Archives Center or transcribe@si.edu

For more information on this project and related material, contact the National Museum of the American Indian Archives Center. [See this project](#) and other collections in the Smithsonian Transcription Center.

A.N. Marquis & Company,
Publishers
324-326 Dearborn Street,
Chicago.

Jan. 28th, 1903.

Cable Address: Marquis, Chicago.

Prof. George H. Pepper,
New York, N.Y.

Dear Sir:-

We have pleasure in inclosing herewith, for revision, the brief personal sketch of yourself which appeared in the 1901-1902 edition of Who's Who in America. Kindly go over this sketch carefully, making any needed corrections or alterations, and such additions as may be requisite to bring the information down to date.

A new edition, the third biennial number, is now in course of preparation and we hope to make the new volume even more worthy of public recognition than have been the earlier editions.

Many new names will be added, names no longer deemed important will be eliminated, and numerous improvements calculated to augment the usefulness of the work will be made.

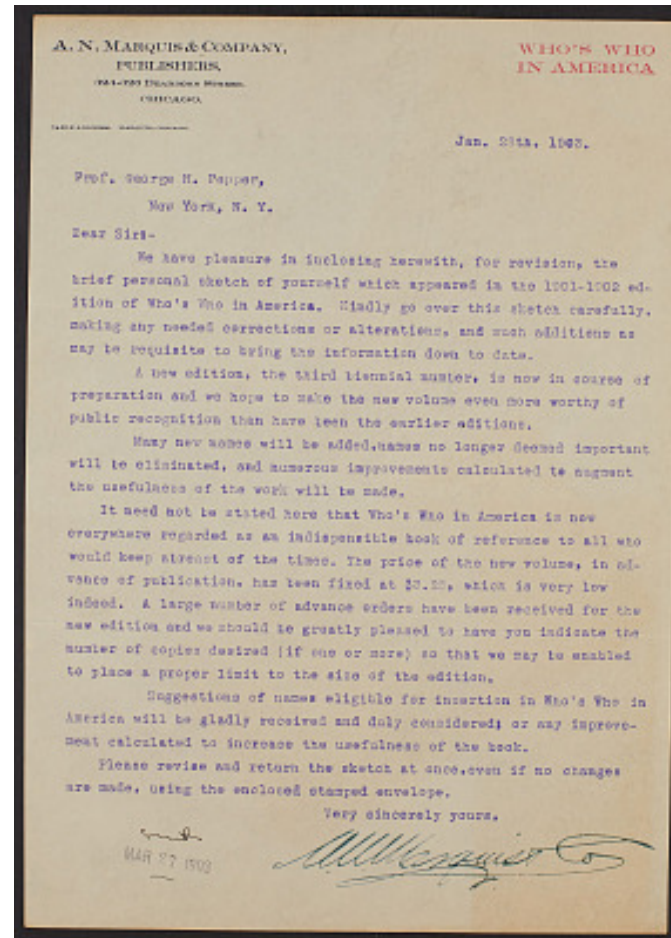
It need not be stated here that Who's Who in America is now everywhere regarded as an indispensable book of reference to all who would keep abreast of the times. The price of the new volume, in advance of publication, has been fixed at \$3.25, which is very low indeed. A large number of advance orders have been received for the new edition and we should be greatly pleased to have you indicate the number of copies desired (if one or more) so that we may be enabled to place a proper limit to the size of the edition.

Suggestions of names eligible for insertion in Who's Who in America will be gladly received and duly considered; or any improvement calculated to increase the usefulness of the book.

Please revise and return the sketch at once, even if no changes are made, using the enclosed stamped envelope.

Very sincerely yours,
[[Signed]]
A.N. Marquis and Co

(?) March 2 1903 (?)



Museum of the American Indian, Heye Foundation - George Pepper:
Correspondence, Jan-Feb 1903
Transcribed and Reviewed by Digital Volunteers
Extracted Apr-02-2023 02:09:08



Smithsonian Institution

National Museum of the American Indian Archives Center

The mission of the Smithsonian is the increase and diffusion of knowledge - shaping the future by preserving our heritage, discovering new knowledge, and sharing our resources with the world. Founded in 1846, the Smithsonian is the world's largest museum and research complex, consisting of 19 museums and galleries, the National Zoological Park, and nine research facilities. Become an active part of our mission through the Transcription Center. Together, we are discovering secrets hidden deep inside our collections that illuminate our history and our world.

Join us!

The Transcription Center: <https://transcription.si.edu>

On Facebook: <https://www.facebook.com/SmithsonianTranscriptionCenter>

On Twitter: [@TranscribeSI](https://twitter.com/TranscribeSI)

Connect with the Smithsonian

Smithsonian Institution: www.si.edu

On Facebook: <https://www.facebook.com/Smithsonian>

On Twitter: [@smithsonian](https://twitter.com/smithsonian)