



Smithsonian Institution

National Museum of the American Indian Archives Center

Museum of the American Indian, Heye Foundation - George Pepper: Correspondence, Oct 1904

Extracted on Apr-19-2024 02:04:09

The Smithsonian Institution thanks all digital volunteers that transcribed and reviewed this material. Your work enriches Smithsonian collections, making them available to anyone with an interest in using them.

The Smithsonian Institution (the "Smithsonian") provides the content on this website (transcription.si.edu), other Smithsonian websites, and third-party sites on which it maintains a presence ("SI Websites") in support of its mission for the "increase and diffusion of knowledge." The Smithsonian invites visitors to use its online content for personal, educational and other non-commercial purposes. By using this website, you accept and agree to abide by the [following terms](#).

- If sharing the material in personal and educational contexts, please cite the National Museum of the American Indian Archives Center as source of the content and the project title as provided at the top of the document. Include the accession number or collection name; when possible, link to the National Museum of the American Indian Archives Center website.
- If you wish to use this material in a for-profit publication, exhibition, or online project, please contact National Museum of the American Indian Archives Center or transcribe@si.edu

For more information on this project and related material, contact the National Museum of the American Indian Archives Center. [See this project](#) and other collections in the Smithsonian Transcription Center.

4.

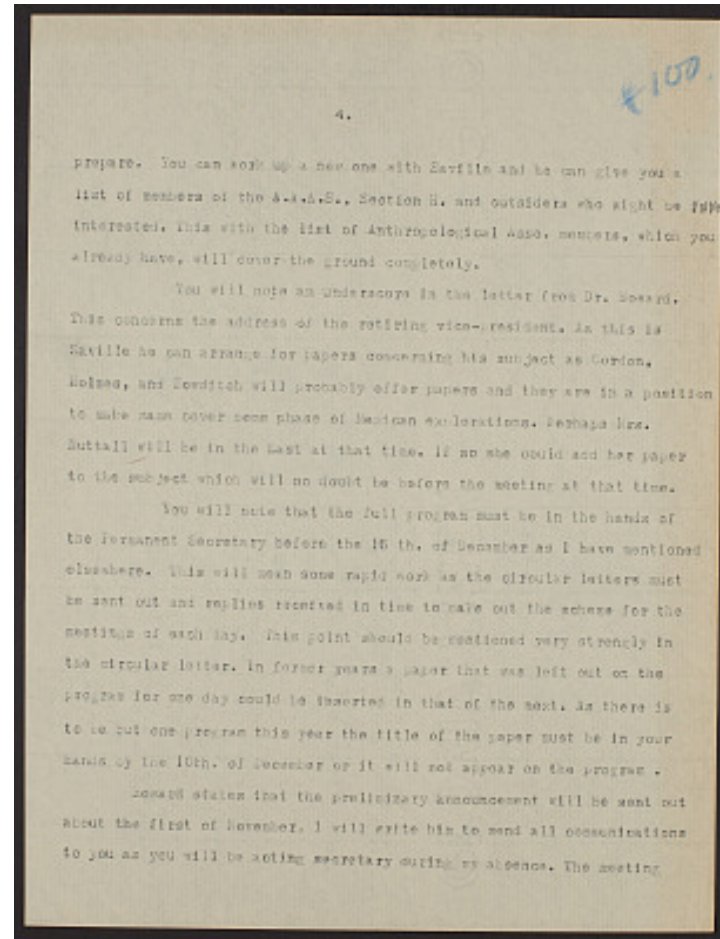
#100.

prepare. You can work up a new one with Saville and he can give you a list of members of the A.A.A.S., Section H. and outsiders who might be ~~intere~~ interested. This with the list of Anthropological Asso. members, which you already have, will cover the ground completely.

You will note an underscore in the letter from Dr. Howard. This concerns the address of the retiring vice-president. As this is Saville he can arrange for papers concerning his subject as Gordon, Holmes, and Bowditch will probably offer papers and they are in a position to make same cover some phase of Mexican explorations. Perhaps Mrs. Nuttall will be in the East at that time. If so she could add her paper to the subject which will no doubt be before the meeting at that time.

You will note that the full program must be in the hands of the Permanent Secretary before the 15th. of December as I have mentioned elsewhere. This will mean some rapid work as the circular letters must be sent out and replies received in time to make out the scheme for the meeting of each day. This point should be mentioned very strongly in the circular letter. In former years a paper that was left out on the program for one day could be inserted in that of the next. As there is to be but one program this year the title of the paper must be in your hands by the 10th. of December or it will not appear on the program.

Howard states that the preliminary announcement will be sent out about the first of November. I will write him to send all communications to you as you will be acting secretary during my absence. The meeting



Museum of the American Indian, Heye Foundation - George Pepper:
Correspondence, Oct 1904
Transcribed and Reviewed by Digital Volunteers
Extracted Apr-19-2024 02:04:09



Smithsonian Institution

National Museum of the American Indian Archives Center

The mission of the Smithsonian is the increase and diffusion of knowledge - shaping the future by preserving our heritage, discovering new knowledge, and sharing our resources with the world. Founded in 1846, the Smithsonian is the world's largest museum and research complex, consisting of 19 museums and galleries, the National Zoological Park, and nine research facilities. Become an active part of our mission through the Transcription Center. Together, we are discovering secrets hidden deep inside our collections that illuminate our history and our world.

Join us!

The Transcription Center: <https://transcription.si.edu>

On Facebook: <https://www.facebook.com/SmithsonianTranscriptionCenter>

On Twitter: [@TranscribeSI](https://twitter.com/TranscribeSI)

Connect with the Smithsonian

Smithsonian Institution: www.si.edu

On Facebook: <https://www.facebook.com/Smithsonian>

On Twitter: [@smithsonian](https://twitter.com/smithsonian)