



Smithsonian Institution

Archives of American Art

Jacques Seligmann & Co. records, General Correspondence: Ernest Brown & Phillips, Ltd., 1933-1935

Extracted on Mar-29-2024 10:41:59

The Smithsonian Institution thanks all digital volunteers that transcribed and reviewed this material. Your work enriches Smithsonian collections, making them available to anyone with an interest in using them.

The Smithsonian Institution (the "Smithsonian") provides the content on this website (transcription.si.edu), other Smithsonian websites, and third-party sites on which it maintains a presence ("SI Websites") in support of its mission for the "increase and diffusion of knowledge." The Smithsonian invites visitors to use its online content for personal, educational and other non-commercial purposes. By using this website, you accept and agree to abide by the [following terms](#).

- If sharing the material in personal and educational contexts, please cite the Archives of American Art as source of the content and the project title as provided at the top of the document. Include the accession number or collection name; when possible, link to the Archives of American Art website.
- If you wish to use this material in a for-profit publication, exhibition, or online project, please contact Archives of American Art or transcribe@si.edu

For more information on this project and related material, contact the Archives of American Art. [See this project](#) and other collections in the Smithsonian Transcription Center.

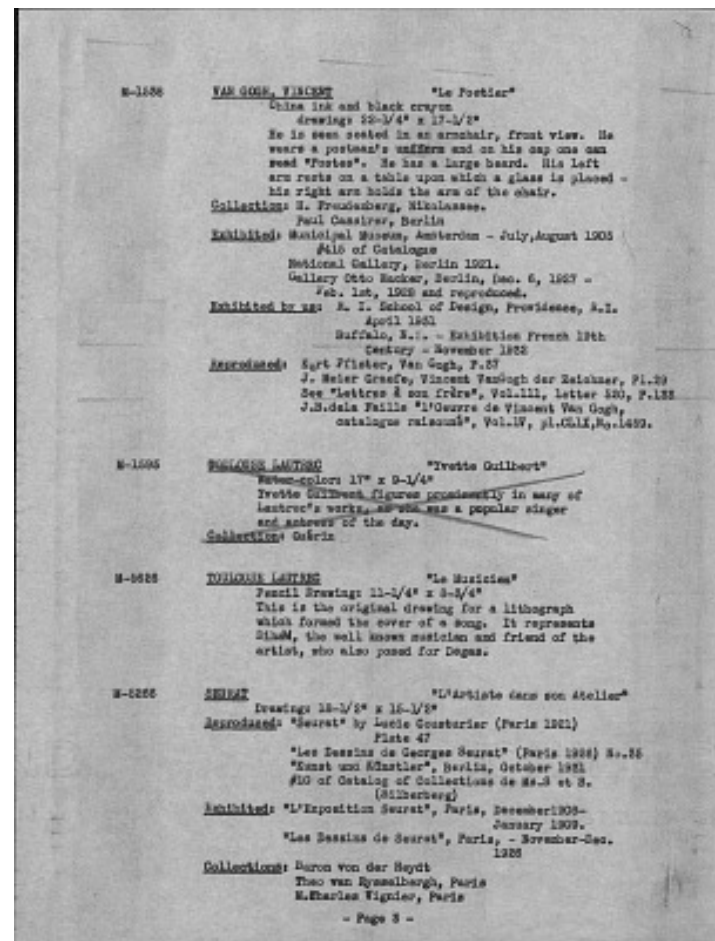
M-1538 VAN GOGH, VINCENT "Le Postier"
 China ink and black crayon
 drawing: 22-1/4" x 17-1/2"
 He is seen seated in an armchair, front view. He wears a postman's uniform and on his cap one can read "Postes". He has a large beard. His left arm rests on a table upon which a glass is placed - his right arm holds the arm of the chair.
 Collection: H. Freudenberg, Nikolassee.
 Paul Cassirer, Berlin
 Exhibited: Municipal Museum, Amsterdam - July, August 1905
 #415 of Catalogue
 National Gallery, Berlin 1921.
 Gallery Otto Wacker, Berlin, Dec. 6, 1927 - Feb. 1st, 1928 and reproduced.
 Exhibited by us: R. I. School of Design, Providence, R.I. April 1931
 Buffalo, N.Y. - Exhibition French 19th Century - November 1932
 Reproduced: Kurt Pfister, Van Gogh, P.37
 J. Meier Graefe, Vincent VanGogh der Zeichner, P.129
 See "Lettres à son frère", Vol.111, letter 520, P.133
 J.B.dela Faille "l'Oeuvre de Vincent Van Gogh, catalogue raisonné", Vol.1V, pl.CL1X,No.1459.

M-1595 ~~TOULOUSE LAUTREC~~ "Yvette Guilbert"
 Water-color: 17" x 9-1/4"
 Yvette Guilbert figures prominently in many of Lautrec's works, as she was a popular singer and actress of the day.
 Collection: Guérin ~~[[/strikethrough]]~~

M-5626 TOULOUSE LAUTREC "Le Musicien"
 Pencil Drawing: 11-1/4" x 8-3/4"
 This is the original drawing for a lithograph which formed the cover of a song. It represents Dihan, the well known musician and friend of the artist, who also posed for Degas.

M-5266 SEURAT "L'Artiste dans son Atelier"
 Drawing: 18-1/2" x 15-1/2"
 Reproduced: "Seurat" by Lucie Cousturier (Paris 1921)
 Plate 47
 "Les Dessins de Georges Seurat" (Paris 1926) No.35
 "Kunst und Künstler", Berlin, October 1931
 #10 of Catalog of Collections de Ms.S et S.
 (Silberberg)
 Exhibited: "L'Exposition Seurat", Paris, December1908- January 1909.
 "Les Dessins de Seurat", Paris, - November-Dec. 1926
 Collections: Baron von der Heydt
 Theo van Rysselbergh, Paris
 M.Charles Vignier, Paris

- Page 3 -



Jacques Seligmann & Co. records, General Correspondence: Ernest Brown
 & Phillips, Ltd., 1933-1935
 Transcribed and Reviewed by Digital Volunteers
 Extracted Mar-29-2024 10:41:59



Smithsonian Institution

Archives of American Art

The mission of the Smithsonian is the increase and diffusion of knowledge - shaping the future by preserving our heritage, discovering new knowledge, and sharing our resources with the world. Founded in 1846, the Smithsonian is the world's largest museum and research complex, consisting of 19 museums and galleries, the National Zoological Park, and nine research facilities. Become an active part of our mission through the Transcription Center. Together, we are discovering secrets hidden deep inside our collections that illuminate our history and our world.

Join us!

The Transcription Center: <https://transcription.si.edu>

On Facebook: <https://www.facebook.com/SmithsonianTranscriptionCenter>

On Twitter: [@TranscribeSI](https://twitter.com/TranscribeSI)

Connect with the Smithsonian

Smithsonian Institution: www.si.edu

On Facebook: <https://www.facebook.com/Smithsonian>

On Twitter: [@smithsonian](https://twitter.com/smithsonian)