



Smithsonian Institution

National Anthropological Archives

S. Ann Dunham Papers, FN 11

Extracted on Apr-19-2024 09:39:06

The Smithsonian Institution thanks all digital volunteers that transcribed and reviewed this material. Your work enriches Smithsonian collections, making them available to anyone with an interest in using them.

The Smithsonian Institution (the "Smithsonian") provides the content on this website (transcription.si.edu), other Smithsonian websites, and third-party sites on which it maintains a presence ("SI Websites") in support of its mission for the "increase and diffusion of knowledge." The Smithsonian invites visitors to use its online content for personal, educational and other non-commercial purposes. By using this website, you accept and agree to abide by the [following terms](#).

- If sharing the material in personal and educational contexts, please cite the National Anthropological Archives as source of the content and the project title as provided at the top of the document. Include the accession number or collection name; when possible, link to the National Anthropological Archives website.
- If you wish to use this material in a for-profit publication, exhibition, or online project, please contact National Anthropological Archives or transcribe@si.edu

For more information on this project and related material, contact the National Anthropological Archives. [See this project](#) and other collections in the Smithsonian Transcription Center.

2

less-skilled empu make knives + sickles because easier; capital is a factor here too
larger perapens with more capital + more experienced epus make larger + more difficult types of tools
low grade iron (not steel) also tends to be used by smaller perapens

[[left side]]

small

low-grade iron

small tools

less-qualified empus

[[right side]]

high grade steel

large

large tools

better-qual. empus

nowadays most common type of new mat are batoniser[?] - steel rods used in brick + building construction (John says a mild or low carbon steel which doesn't take tempe very well unless specially heated)
- eager to try a non-teak charcoal if we make available
- empu wages depend on type of product made + for scissors, for example, now 1250-1500

- suggested that we take them on a tour to Ceper

- less women working as ubuls than before because "tenaga laki cukup"

- complained that they all have eye + ear troubles - one person

requested protective equipment

colored glasses for working at the fire, clear for filing work

- [[crossed out]] [[?]] [[crossed out]] 'racum bebi' mixed in quenching

water as sepo -

- used kikirs sold to tengkulaks who takes them to Sem where, are to

them, they can be reworked

process is kept secret by the Sem factory

1 tengkulak from village + rest from outside

we saw fire shield over fire to protect

Pak Wagiman in the vil. once had a rotary blower (subst. for a bellows)

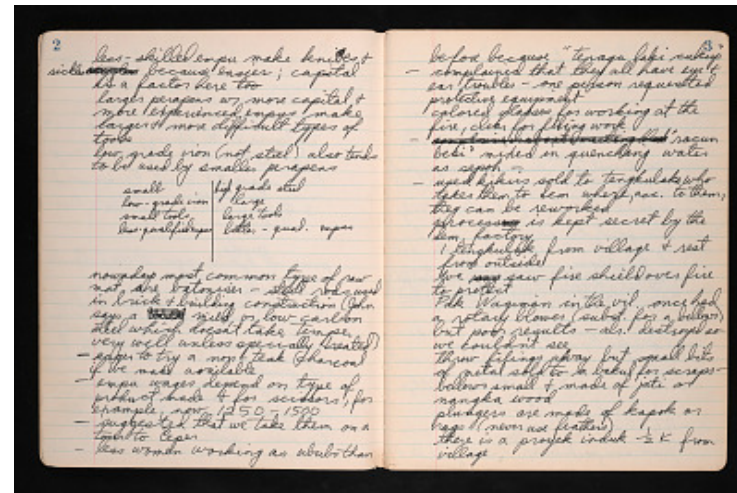
but poor results - als. destroyed so we couldn't see

throw filings away but small bits of metal sold to a bakul for scraps -

bellows small + made of jati or mangka wood

plungers are made of kapok or rags (never use feathers)

there is a proyek induk 1/2K from village



S. Ann Dunham Papers, FN 11
Transcribed and Reviewed by Digital Volunteers
Extracted Apr-19-2024 09:39:06



Smithsonian Institution

National Anthropological Archives

The mission of the Smithsonian is the increase and diffusion of knowledge - shaping the future by preserving our heritage, discovering new knowledge, and sharing our resources with the world. Founded in 1846, the Smithsonian is the world's largest museum and research complex, consisting of 19 museums and galleries, the National Zoological Park, and nine research facilities. Become an active part of our mission through the Transcription Center. Together, we are discovering secrets hidden deep inside our collections that illuminate our history and our world.

Join us!

The Transcription Center: <https://transcription.si.edu>

On Facebook: <https://www.facebook.com/SmithsonianTranscriptionCenter>

On Twitter: [@TranscribeSI](https://twitter.com/TranscribeSI)

Connect with the Smithsonian

Smithsonian Institution: www.si.edu

On Facebook: <https://www.facebook.com/Smithsonian>

On Twitter: [@smithsonian](https://twitter.com/smithsonian)