



Smithsonian Institution

National Anthropological Archives

S. Ann Dunham Papers, FN 11

Extracted on Feb-05-2023 10:43:05

The Smithsonian Institution thanks all digital volunteers that transcribed and reviewed this material. Your work enriches Smithsonian collections, making them available to anyone with an interest in using them.

The Smithsonian Institution (the "Smithsonian") provides the content on this website (transcription.si.edu), other Smithsonian websites, and third-party sites on which it maintains a presence ("SI Websites") in support of its mission for the "increase and diffusion of knowledge." The Smithsonian invites visitors to use its online content for personal, educational and other non-commercial purposes. By using this website, you accept and agree to abide by the [following terms](#).

- If sharing the material in personal and educational contexts, please cite the National Anthropological Archives as source of the content and the project title as provided at the top of the document. Include the accession number or collection name; when possible, link to the National Anthropological Archives website.
- If you wish to use this material in a for-profit publication, exhibition, or online project, please contact National Anthropological Archives or transcribe@si.edu

For more information on this project and related material, contact the National Anthropological Archives. [See this project](#) and other collections in the Smithsonian Transcription Center.

10

next visited nearby house of villages named Sugimin to get firing data - is firing tiles by the kropokak system (no kiln) - wood stacked in + among layers of tiles with final covering of dried bamboo leaves - is a Gragung - style kiln in Sugimin's yard which he built on his own but can't use reason that Gragung kiln uses mainly larahan + hence burns at a lower temperature in this area not enough larahan + villagers usually fire with purchased wood - if use wood in Grragung kiln the edges of the tiles will melt

Sugiman + one child work together to produce an ave. of 100 tiles a day in dry season (8 mo.), less in rainy this is not, however, their only or even main source of income since have sawah

tiles sold to tengkulaks + bicycle bakuls

((notes from same day cont. p.26 this book))

11

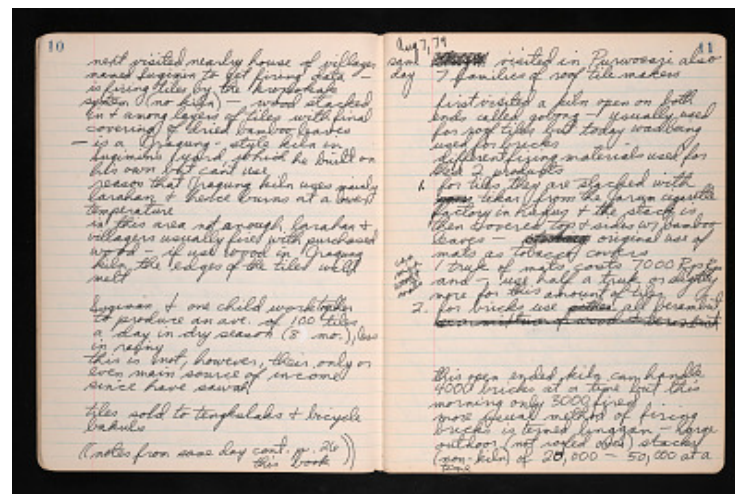
Aug 7, 79 same day

[[~~strickethrough~~]] [[?]] [[/~~strickethrough~~]] visited in Purwosari also 7 families of roof tile makers

first visited a kiln open on both ends called gobons - usually used for roof tiles but today was being used for bricks different firing materials used for these 2 products
 1. for tiles they are stacked with tikar from the Garum cigarette factory in Kudus & the stack is then covered top & sides w/ bamboo leaves - original use of mats as tobacco covers

[[margin]] can mix wood & mats

1 truk of mats costs 7000 RpRp



and - use half a truk or slightly
more for this amount of tiles

2. for bricks use ~~either~~ ~~all berambut~~
~~[[?]]~~

this open ended kiln can handle
4000 bricks at a time but this
morning only 3000 fired
more usual method of firing
bricks is termed linggan - large
outdoor (not roofed over) stacks
(non-kiln) of 20,000-50,000 at a
time

S. Ann Dunham Papers, FN 11
Transcribed and Reviewed by Digital Volunteers
Extracted Feb-05-2023 10:43:05



Smithsonian Institution

National Anthropological Archives

The mission of the Smithsonian is the increase and diffusion of knowledge - shaping the future by preserving our heritage, discovering new knowledge, and sharing our resources with the world. Founded in 1846, the Smithsonian is the world's largest museum and research complex, consisting of 19 museums and galleries, the National Zoological Park, and nine research facilities. Become an active part of our mission through the Transcription Center. Together, we are discovering secrets hidden deep inside our collections that illuminate our history and our world.

Join us!

The Transcription Center: <https://transcription.si.edu>

On Facebook: <https://www.facebook.com/SmithsonianTranscriptionCenter>

On Twitter: [@TranscribeSI](https://twitter.com/TranscribeSI)

Connect with the Smithsonian

Smithsonian Institution: www.si.edu

On Facebook: <https://www.facebook.com/Smithsonian>

On Twitter: [@smithsonian](https://twitter.com/smithsonian)