



Smithsonian Institution

Smithsonian Institution Archives

Edward William Nelson - Death Valley Expedition, 1890-1891

Extracted on Feb-05-2023 05:49:31

The Smithsonian Institution thanks all digital volunteers that transcribed and reviewed this material. Your work enriches Smithsonian collections, making them available to anyone with an interest in using them.

The Smithsonian Institution (the "Smithsonian") provides the content on this website (transcription.si.edu), other Smithsonian websites, and third-party sites on which it maintains a presence ("SI Websites") in support of its mission for the "increase and diffusion of knowledge." The Smithsonian invites visitors to use its online content for personal, educational and other non-commercial purposes. By using this website, you accept and agree to abide by the [following terms](#).

- If sharing the material in personal and educational contexts, please cite the Smithsonian Institution Archives as source of the content and the project title as provided at the top of the document. Include the accession number or collection name; when possible, link to the Smithsonian Institution Archives website.
- If you wish to use this material in a for-profit publication, exhibition, or online project, please contact Smithsonian Institution Archives or transcribe@si.edu

For more information on this project and related material, contact the Smithsonian Institution Archives. [See this project](#) and other collections in the Smithsonian Transcription Center.

and down the river.

During the day I saw numerous tracks of *Geococcyx* in the sand. Also *Pooipiza* ~~[[written over unreadable strikethrough]]~~ ~~[[strikethrough coenileia]]~~ and a couple of Ravens. A goshawk passed high overhead at midday-

Put out traps mainly for Mt. Rats in clay bank along river.

Caught 4 dark colored *Harmonys* in damp situations along river. These animals are not ~~[[written over strikethrough "never"]]~~ found when the soil is not damp enough so they can dig in it & it

~~[[next page]]~~ has consistency enough to retain shape of burrow.

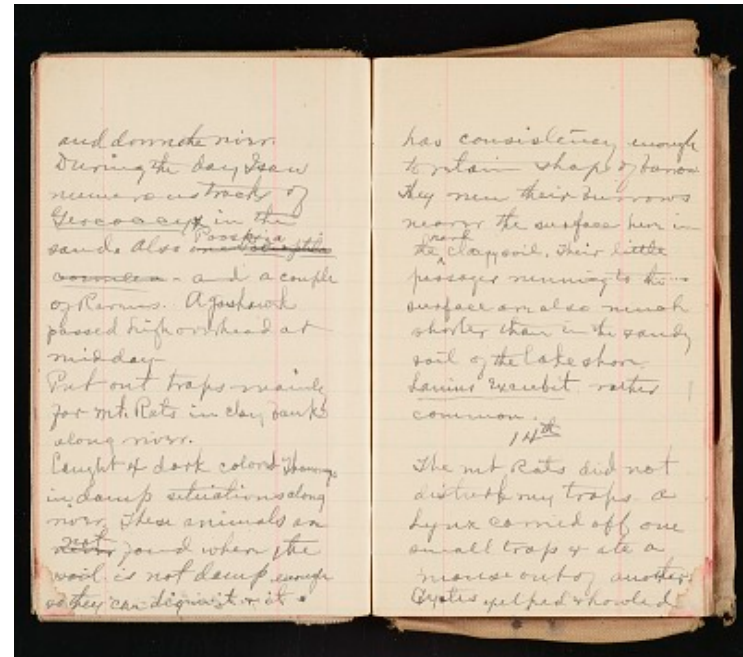
They ~~[[unreadable]]~~ their burrows nearer the surface here in the ~~[[carat]]~~ hard clay soil. Their little passages running to the surface are also much shorter than in the sandy soil of the lake shore.

[[Underlined]] *Lanius Excubitor* ~~[[end underline]]~~ rather common.

14th

The net rats did not disturb my traps- a Lynx came off one small trap & ate a mouse out of another.

Cy~~[[?]]~~is yelped & howled~~[[end of document]]~~



Edward William Nelson - Death Valley Expedition, 1890-1891
Transcribed and Reviewed by Digital Volunteers
Extracted Feb-05-2023 05:49:31



Smithsonian Institution

Smithsonian Institution Archives

The mission of the Smithsonian is the increase and diffusion of knowledge - shaping the future by preserving our heritage, discovering new knowledge, and sharing our resources with the world. Founded in 1846, the Smithsonian is the world's largest museum and research complex, consisting of 19 museums and galleries, the National Zoological Park, and nine research facilities. Become an active part of our mission through the Transcription Center. Together, we are discovering secrets hidden deep inside our collections that illuminate our history and our world.

Join us!

The Transcription Center: <https://transcription.si.edu>

On Facebook: <https://www.facebook.com/SmithsonianTranscriptionCenter>

On Twitter: [@TranscribeSI](https://twitter.com/TranscribeSI)

Connect with the Smithsonian

Smithsonian Institution: www.si.edu

On Facebook: <https://www.facebook.com/Smithsonian>

On Twitter: [@smithsonian](https://twitter.com/smithsonian)