



Smithsonian Institution

Smithsonian Institution Archives

Edward William Nelson - Death Valley Expedition, 1890-1891

Extracted on Apr-23-2024 06:21:13

The Smithsonian Institution thanks all digital volunteers that transcribed and reviewed this material. Your work enriches Smithsonian collections, making them available to anyone with an interest in using them.

The Smithsonian Institution (the "Smithsonian") provides the content on this website (transcription.si.edu), other Smithsonian websites, and third-party sites on which it maintains a presence ("SI Websites") in support of its mission for the "increase and diffusion of knowledge." The Smithsonian invites visitors to use its online content for personal, educational and other non-commercial purposes. By using this website, you accept and agree to abide by the [following terms](#).

- If sharing the material in personal and educational contexts, please cite the Smithsonian Institution Archives as source of the content and the project title as provided at the top of the document. Include the accession number or collection name; when possible, link to the Smithsonian Institution Archives website.
- If you wish to use this material in a for-profit publication, exhibition, or online project, please contact Smithsonian Institution Archives or transcribe@si.edu

For more information on this project and related material, contact the Smithsonian Institution Archives. [See this project](#) and other collections in the Smithsonian Transcription Center.

traps last night. Also caught two Ochotodons close to the river bank under grasswood bushes.

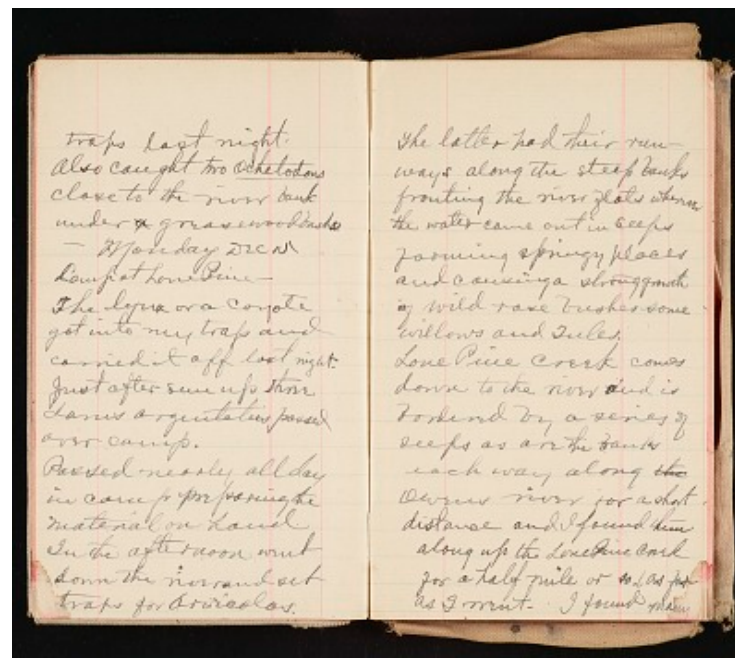
- Monday Dec 10

Camp at Lone Pine-

The lynx or a coyote got into my trap and cornered it off last night. Just after sun up there [[Larus argentatus?]] passed over camp.

Passed nearly all day in camp performing the material on hand. In the afternoon went down the river and set traps for arvicolas.

The latter had their runways along the steep banks fronting the river flats wherever the water come out in seeps forming springy places and causing a strong growth of wild rose bushes - some willows and Tules. Lone Pine creek comes down to the river and is bordered by a series of seeps as are the banks each way along ~~the~~ the ~~river~~ for a short distance and I found him along up the Lone Pine Creek for a half mile or so (as far as I must. I found many



Edward William Nelson - Death Valley Expedition, 1890-1891

Transcribed and Reviewed by Digital Volunteers

Extracted Apr-23-2024 06:21:13



Smithsonian Institution

Smithsonian Institution Archives

The mission of the Smithsonian is the increase and diffusion of knowledge - shaping the future by preserving our heritage, discovering new knowledge, and sharing our resources with the world. Founded in 1846, the Smithsonian is the world's largest museum and research complex, consisting of 19 museums and galleries, the National Zoological Park, and nine research facilities. Become an active part of our mission through the Transcription Center. Together, we are discovering secrets hidden deep inside our collections that illuminate our history and our world.

Join us!

The Transcription Center: <https://transcription.si.edu>

On Facebook: <https://www.facebook.com/SmithsonianTranscriptionCenter>

On Twitter: [@TranscribeSI](https://twitter.com/TranscribeSI)

Connect with the Smithsonian

Smithsonian Institution: www.si.edu

On Facebook: <https://www.facebook.com/Smithsonian>

On Twitter: [@smithsonian](https://twitter.com/smithsonian)