



**Smithsonian Institution**

*Freedmen's Bureau*

## **Mississippi Assistant Commissioner, Labor Contracts of Freedmen, Oct.–Dec. 1865, Part 2**

Extracted on Mar-29-2024 04:59:04

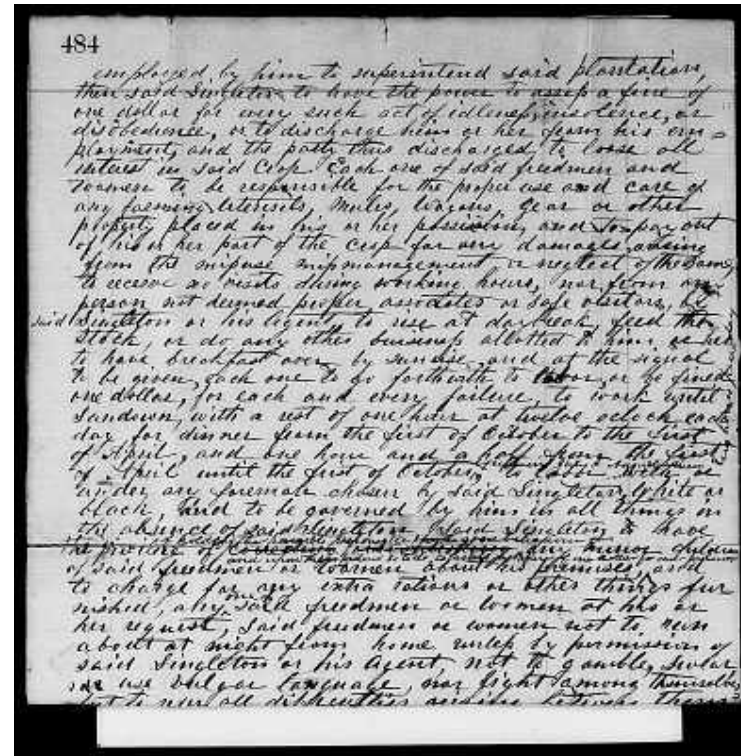
**The Smithsonian Institution thanks all digital volunteers that transcribed and reviewed this material. Your work enriches Smithsonian collections, making them available to anyone with an interest in using them.**

The Smithsonian Institution (the "Smithsonian") provides the content on this website ([transcription.si.edu](https://transcription.si.edu)), other Smithsonian websites, and third-party sites on which it maintains a presence ("SI Websites") in support of its mission for the "increase and diffusion of knowledge." The Smithsonian invites visitors to use its online content for personal, educational and other non-commercial purposes. By using this website, you accept and agree to abide by the [following terms](#).

- If sharing the material in personal and educational contexts, please cite the Freedmen's Bureau as source of the content and the project title as provided at the top of the document. Include the accession number or collection name; when possible, link to the Freedmen's Bureau website.
- If you wish to use this material in a for-profit publication, exhibition, or online project, please contact Freedmen's Bureau or [transcribe@si.edu](mailto:transcribe@si.edu)

For more information on this project and related material, contact the Freedmen's Bureau. [See this project](#) and other collections in the Smithsonian Transcription Center.

employed by him to superintend said plantations, then said Singleton to have the power to assess a fine of one dollar for every such act of idleness, insolence, or disobedience, or to discharge him or her from his employment, and the party thus discharged to loose all interest in said crop. Each one of said freedmen and women to be responsible for the proper use and care of any farming utensils, mules, wagons, gear or other property placed in his or her possession, and to pay out of his or her part of the crop for any damages, arising from the misuse, mismanagement, or neglect of the same, to receive no visits during working hours, nor from any person not deemed proper associates or safe visitors, by said Singleton or his Agent, to rise at daybreak, feed the stock, or do any other business allotted to him or her, to have breakfast over by sunrise, and at the signal to be given, each one to go forthwith to labor, or be fined one dollar, for each and every failure, to work until sundown, with a rest of one hour at twelve o'clock each day, for dinner from the first of October to the first of April, and one hour and a half from the first of April until the first of October, to labor with or under any foremen chosen by said Singleton, white or black, and to be governed by him in all things in the absence of said Singleton. Said Singleton to have the privilege of ~~correcting and controlling~~ holding the parties responsible for the good behaviour of any minor children and upon their failure so to do, to assess five of one dollar for each failure of said freedmen or women about his premises, and to charge for any extra rations or other things furnished, any one said freedmen or women at his or her request, Said freedmen or women run about at night from home unless by permission of said Singleton or his Agent, not to gamble, swear or use vulgar language, not fight among themselves, but to refer all difficulties arising between them



Mississippi Assistant Commissioner, Labor Contracts of Freedmen,  
Oct.-Dec. 1865, Part 2  
Transcribed and Reviewed by Digital Volunteers  
Extracted Mar-29-2024 04:59:04



## Smithsonian Institution

*Freedmen's Bureau*

The mission of the Smithsonian is the increase and diffusion of knowledge - shaping the future by preserving our heritage, discovering new knowledge, and sharing our resources with the world. Founded in 1846, the Smithsonian is the world's largest museum and research complex, consisting of 19 museums and galleries, the National Zoological Park, and nine research facilities. Become an active part of our mission through the Transcription Center. Together, we are discovering secrets hidden deep inside our collections that illuminate our history and our world.

Join us!

The Transcription Center: <https://transcription.si.edu>

On Facebook: <https://www.facebook.com/SmithsonianTranscriptionCenter>

On Twitter: [@TranscribeSI](https://twitter.com/TranscribeSI)

Connect with the Smithsonian

Smithsonian Institution: [www.si.edu](http://www.si.edu)

On Facebook: <https://www.facebook.com/Smithsonian>

On Twitter: [@smithsonian](https://twitter.com/smithsonian)