



Smithsonian Institution

Archives of American Art

Jacques Seligmann & Co. records, General Correspondence: Loo, C. T., 1934-1952

Extracted on Mar-29-2024 07:00:22

The Smithsonian Institution thanks all digital volunteers that transcribed and reviewed this material. Your work enriches Smithsonian collections, making them available to anyone with an interest in using them.

The Smithsonian Institution (the "Smithsonian") provides the content on this website (transcription.si.edu), other Smithsonian websites, and third-party sites on which it maintains a presence ("SI Websites") in support of its mission for the "increase and diffusion of knowledge." The Smithsonian invites visitors to use its online content for personal, educational and other non-commercial purposes. By using this website, you accept and agree to abide by the [following terms](#).

- If sharing the material in personal and educational contexts, please cite the Archives of American Art as source of the content and the project title as provided at the top of the document. Include the accession number or collection name; when possible, link to the Archives of American Art website.
- If you wish to use this material in a for-profit publication, exhibition, or online project, please contact Archives of American Art or transcribe@si.edu

For more information on this project and related material, contact the Archives of American Art. [See this project](#) and other collections in the Smithsonian Transcription Center.

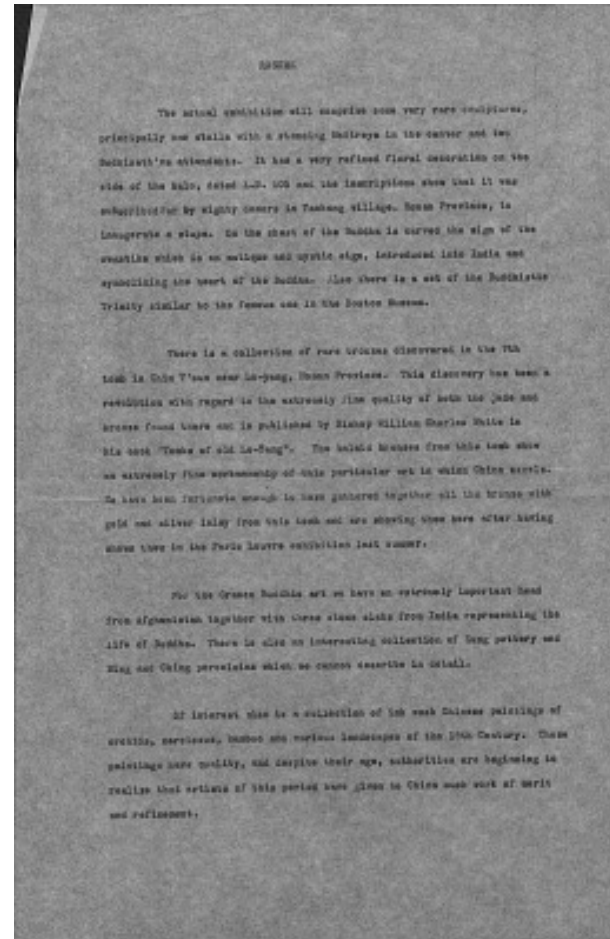
RESUME

The actual exhibition will comprise some very rare sculptures, principally one stella with a standing Maitreya in the center and two Bodhisatt'va attendants. It has a very refined floral decoration on the side of the halo, dated A.D. 505 and the inscriptions show that it was subscribed for by eighty donors in Tachang village, Honan Province, to inaugurate a stupa. On the chest of the Buddha is carved the sign of the swastika which is an antique and mystic sign, introduced into India and symbolizing the heart of the Buddha. Also there is a set of the Buddhistic Trinity similar to the famous one in the Boston Museum.

There is a collection of rare bronzes discovered in the 7th tomb in Chin T'sun near Lo-yang, Honan Province. This discovery has been a revolution with regard to the extremely fine quality of both the jade and bronze found there and is published by Bishop William Charles White in his book "Tombs of old Lo-Yang". The inlaid bronzes from this tomb show an extremely fine workmanship of this particular art in which China excels. We have been fortunate enough to have gathered together all the bronze with gold and silver inlay from this tomb and are showing them here after having shown them in the Paris Louvre exhibition last summer.

For the Graeco Buddhic art we have an extremely important head from Afghanistan together with three stone slabs from India representing the life of Buddha. There is also an interesting collection of Sung pottery and Ming and Ching porcelains which we cannot describe in detail.

Of interest also is a collection of ink wash Chinese paintings of orchids, narcissus, bamboo and various landscapes of the 18th Century. These paintings have quality, and despite their age, authorities are beginning to realize that artists of this period have given to China much work of merit and refinement.



Jacques Seligmann & Co. records, General Correspondence: Loo, C. T., 1934-1952
Transcribed and Reviewed by Digital Volunteers
Extracted Mar-29-2024 07:00:22



Smithsonian Institution

Archives of American Art

The mission of the Smithsonian is the increase and diffusion of knowledge - shaping the future by preserving our heritage, discovering new knowledge, and sharing our resources with the world. Founded in 1846, the Smithsonian is the world's largest museum and research complex, consisting of 19 museums and galleries, the National Zoological Park, and nine research facilities. Become an active part of our mission through the Transcription Center. Together, we are discovering secrets hidden deep inside our collections that illuminate our history and our world.

Join us!

The Transcription Center: <https://transcription.si.edu>

On Facebook: <https://www.facebook.com/SmithsonianTranscriptionCenter>

On Twitter: [@TranscribeSI](https://twitter.com/TranscribeSI)

Connect with the Smithsonian

Smithsonian Institution: www.si.edu

On Facebook: <https://www.facebook.com/Smithsonian>

On Twitter: [@smithsonian](https://twitter.com/smithsonian)