



Smithsonian Institution

Smithsonian National Air and Space Museum Archives

New York Airways Collection - Cierva Rotorcraft Helicopters, 1971

Extracted on Mar-29-2024 09:28:03

The Smithsonian Institution thanks all digital volunteers that transcribed and reviewed this material. Your work enriches Smithsonian collections, making them available to anyone with an interest in using them.

The Smithsonian Institution (the "Smithsonian") provides the content on this website (transcription.si.edu), other Smithsonian websites, and third-party sites on which it maintains a presence ("SI Websites") in support of its mission for the "increase and diffusion of knowledge." The Smithsonian invites visitors to use its online content for personal, educational and other non-commercial purposes. By using this website, you accept and agree to abide by the [following terms](#).

- If sharing the material in personal and educational contexts, please cite the Smithsonian National Air and Space Museum Archives as source of the content and the project title as provided at the top of the document. Include the accession number or collection name; when possible, link to the Smithsonian National Air and Space Museum Archives website.
- If you wish to use this material in a for-profit publication, exhibition, or online project, please contact Smithsonian National Air and Space Museum Archives or transcribe@si.edu

For more information on this project and related material, contact the Smithsonian National Air and Space Museum Archives. [See this project](#) and other collections in the Smithsonian Transcription Center.

21.1.71.
J.S.S.

CIERVA ROTOCRAFT LIMITED]
GRASSHOPPER HELICOPTER
(CR-LTH-1)

4. Company Activities and Plans

4.2 Staff of Operating Subsidiary

Servotec comprises a compact team of about 60 in all, including administration, technical engineers, designers and craftsmen. The main activity is in helicopter design and development, but a variable amount of capacity exists which is used on a variety of contract assignments in several fields of engineering. Planning and cost control are adequate for reliable budgeting, without loading contracts with heavy overheads. The whole organisation [[organization]] is located at Redhill Aerodrome.

Work we have successfully undertaken includes design and development of aero sub-assemblies, medical equipment, special purpose machines, and research hardware such as test gear including hydraulics and electronic instrumentation elements and systems. This diversity of engineering activity stimulates versatility, enterprise and originality throughout the team, and we pride ourselves on our flexibility and freedom from the prejudices and politics of larger and older firms. Our design and inspection organisations [[organizations]] are approved by the Air Registration Board.

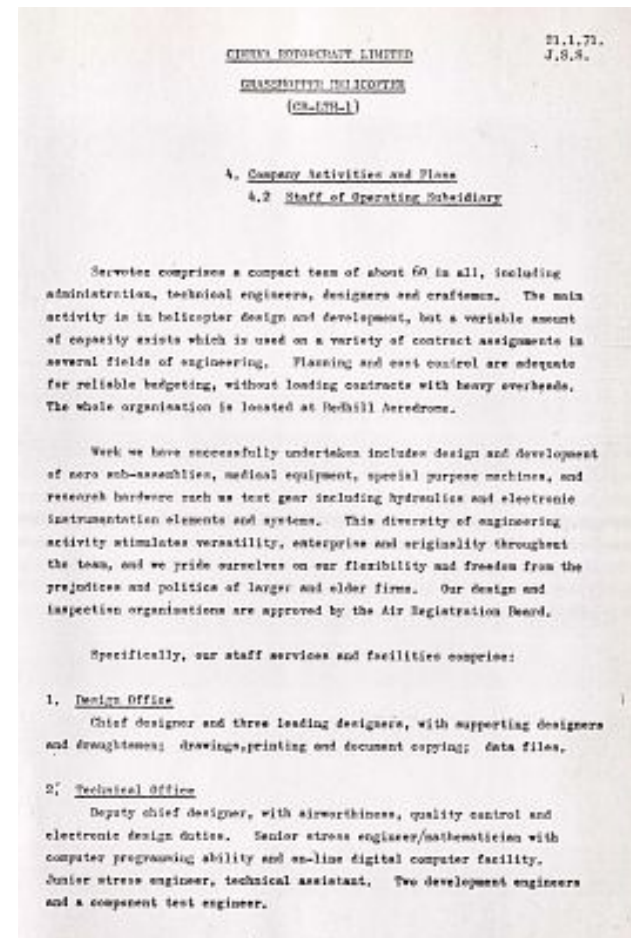
Specifically, our staff services and facilities comprise:

1. Design Office

Chief designer and three leading designers, with supporting designers and draughtsmen; drawings, printing and document copying; data files.

2. Technical Office

Deputy chief designer, with airworthiness, quality control and electronic design duties. Senior stress engineer/mathematician with computer programming ability and on-line digital computer facility. Junior stress engineer, technical assistant. Two development engineers and a component test engineer.



New York Airways Collection - Cierva Rotorcraft Helicopters, 1971
Transcribed and Reviewed by Digital Volunteers
Extracted Mar-29-2024 09:28:03



Smithsonian Institution

Smithsonian National Air and Space Museum Archives

The mission of the Smithsonian is the increase and diffusion of knowledge - shaping the future by preserving our heritage, discovering new knowledge, and sharing our resources with the world. Founded in 1846, the Smithsonian is the world's largest museum and research complex, consisting of 19 museums and galleries, the National Zoological Park, and nine research facilities. Become an active part of our mission through the Transcription Center. Together, we are discovering secrets hidden deep inside our collections that illuminate our history and our world.

Join us!

The Transcription Center: <https://transcription.si.edu>

On Facebook: <https://www.facebook.com/SmithsonianTranscriptionCenter>

On Twitter: [@TranscribeSI](https://twitter.com/TranscribeSI)

Connect with the Smithsonian

Smithsonian Institution: www.si.edu

On Facebook: <https://www.facebook.com/Smithsonian>

On Twitter: [@smithsonian](https://twitter.com/smithsonian)