



Smithsonian Institution

Smithsonian National Air and Space Museum Archives

New York Airways Collection - Notes, "Boeing Questionnaire" [NYA Passenger Survey, Spring 1967]

Extracted on Apr-17-2024 07:36:19

The Smithsonian Institution thanks all digital volunteers that transcribed and reviewed this material. Your work enriches Smithsonian collections, making them available to anyone with an interest in using them.

The Smithsonian Institution (the "Smithsonian") provides the content on this website (transcription.si.edu), other Smithsonian websites, and third-party sites on which it maintains a presence ("SI Websites") in support of its mission for the "increase and diffusion of knowledge." The Smithsonian invites visitors to use its online content for personal, educational and other non-commercial purposes. By using this website, you accept and agree to abide by the [following terms](#).

- If sharing the material in personal and educational contexts, please cite the Smithsonian National Air and Space Museum Archives as source of the content and the project title as provided at the top of the document. Include the accession number or collection name; when possible, link to the Smithsonian National Air and Space Museum Archives website.
- If you wish to use this material in a for-profit publication, exhibition, or online project, please contact Smithsonian National Air and Space Museum Archives or transcribe@si.edu

For more information on this project and related material, contact the Smithsonian National Air and Space Museum Archives. [See this project](#) and other collections in the Smithsonian Transcription Center.

[[Left Corner]] [[Underlined Mr Whealtat]] FYI y6/w

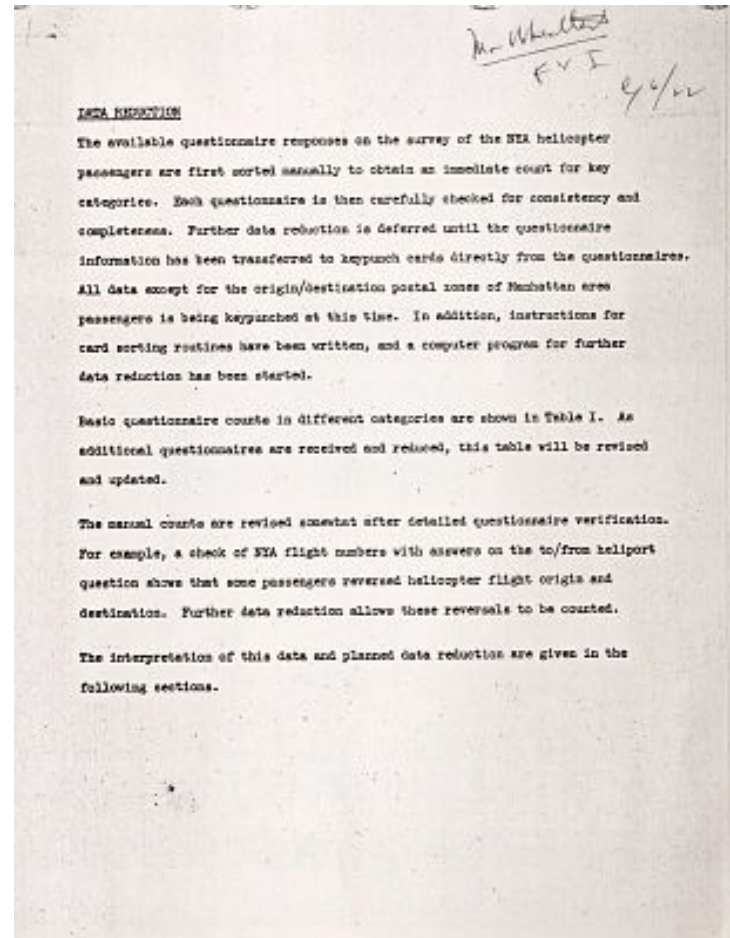
[[Underlined Data Reduction]]

The available questionnaire responses on the survey of the NYA helicopter passengers are first sorted manually to obtain an immediate count for key categories. Each questionnaire is then carefully checked for consistency and completeness. Further data reduction is deferred until the questionnaire information has been transferred to keypunch cards directly from the questionnaires. All data except for the origin/destination postal zones of Manhattan area passengers is being keypunched at this time. In addition, instructions for card sorting routines have been written, and a computer program for further data reduction has been started.

Basic questionnaire counts in different categories are shown in Table I. As additional questionnaires are received and reduced, this table will be revised and updated.

The manual counts are revised somewhat after detailed questionnaire verification. For example, a check NYA flight numbers with answers on the to/from heliport question shows that some passengers reversed helicopter flight origin and destination. Further data reduction allows these reversals to be counted.

The interpretation of this data and planned data reduction are given in the following sections.



New York Airways Collection - Notes, "Boeing Questionnaire" [NYA Passenger Survey, Spring 1967]
Transcribed and Reviewed by Digital Volunteers
Extracted Apr-17-2024 07:36:19



Smithsonian Institution

Smithsonian National Air and Space Museum Archives

The mission of the Smithsonian is the increase and diffusion of knowledge - shaping the future by preserving our heritage, discovering new knowledge, and sharing our resources with the world. Founded in 1846, the Smithsonian is the world's largest museum and research complex, consisting of 19 museums and galleries, the National Zoological Park, and nine research facilities. Become an active part of our mission through the Transcription Center. Together, we are discovering secrets hidden deep inside our collections that illuminate our history and our world.

Join us!

The Transcription Center: <https://transcription.si.edu>

On Facebook: <https://www.facebook.com/SmithsonianTranscriptionCenter>

On Twitter: [@TranscribeSI](https://twitter.com/TranscribeSI)

Connect with the Smithsonian

Smithsonian Institution: www.si.edu

On Facebook: <https://www.facebook.com/Smithsonian>

On Twitter: [@smithsonian](https://twitter.com/smithsonian)