



**Smithsonian Institution**

*National Museum of the American Indian Archives Center*

## **Leuman Maurice Waugh collection - Correspondence, 1929 (Part 1)**

Extracted on Apr-23-2024 09:01:47

**The Smithsonian Institution thanks all digital volunteers that transcribed and reviewed this material. Your work enriches Smithsonian collections, making them available to anyone with an interest in using them.**

The Smithsonian Institution (the "Smithsonian") provides the content on this website ([transcription.si.edu](https://transcription.si.edu)), other Smithsonian websites, and third-party sites on which it maintains a presence ("SI Websites") in support of its mission for the "increase and diffusion of knowledge." The Smithsonian invites visitors to use its online content for personal, educational and other non-commercial purposes. By using this website, you accept and agree to abide by the [following terms](#).

- If sharing the material in personal and educational contexts, please cite the National Museum of the American Indian Archives Center as source of the content and the project title as provided at the top of the document. Include the accession number or collection name; when possible, link to the National Museum of the American Indian Archives Center website.
- If you wish to use this material in a for-profit publication, exhibition, or online project, please contact National Museum of the American Indian Archives Center or [transcribe@si.edu](mailto:transcribe@si.edu)

For more information on this project and related material, contact the National Museum of the American Indian Archives Center. [See this project](#) and other collections in the Smithsonian Transcription Center.

April 11th 1929.

My dear Capt. Jones

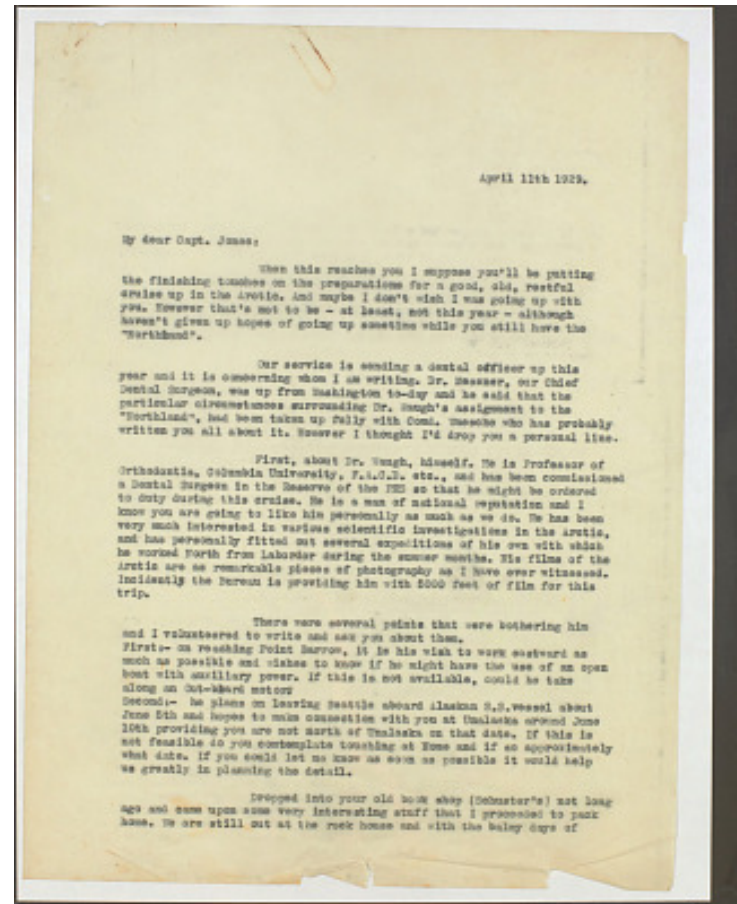
When this reaches you I suppose you'll be putting the finishing touches on the preparations for a good, old, restful cruise up in the Arctic. And maybe I don't wish I was going up with you. However that's not to be - at least, not this year - although haven't given up hopes of going up sometime while you still have the "Northland".

Our service is sending a dental officer up this year and it is concerning whom I am writing. Dr. Messner, our Chief Dental Surgeon, was up from Washington to-day and he said that the particular circumstances surrounding Dr. Waugh's assignment to the "Northland", had been taken up fully with Comd. Waesche who has probably written you all about it. However I thought I'd drop you a personal line.

First, about Dr. Waugh, himself. He is Professor of Orthodontia, Columbia University, F.A.C.D. etc., and has been commissioned a Dental Surgeon in the Reserve of the PHS so that he might be ordered to duty during this cruise. He is a man of national reputation and I know you are going to like him personally as much as we do. He has been very much interested in various scientific investigations in the Arctic, and has personally fitted out several expeditions of his own with which he worked North from Labrador during the summer months. His films of the Arctic are as remarkable pieces of photograph as I have ever witnessed. Incidentally the Bureau is providing him with 5000 feet of film for this trip.

There were several points that were bothering him and I volunteered to write and ask you about them.  
First:- on reaching Point Barrow, it is his wish to work eastward as much as possible and wishes to know if he might have the use of an open boat with auxiliary power. If this is not available, could he take along an Out-board motor?  
Second:- he plans on leaving Seattle aboard Alaskan S.S.vessel about June 5th and hopes to make connection with you at Unalaska around June 10th providing you are not north of Unalaska on that date. If this is not feasible do you contemplate touching at Nome and if so approximately what date. If you could let me know as soon as possible it would help us greatly in planning the detail.

Dropped into your old book shop (Schuster's) not long ago and came upon some very interesting stuff that I proceeded to pack home. We are still out at the rock house and with the balmy days of



Leuman Maurice Waugh collection - Correspondence, 1929 (Part 1)  
Transcribed and Reviewed by Digital Volunteers  
Extracted Apr-23-2024 09:01:47



## Smithsonian Institution

*National Museum of the American Indian Archives Center*

The mission of the Smithsonian is the increase and diffusion of knowledge - shaping the future by preserving our heritage, discovering new knowledge, and sharing our resources with the world. Founded in 1846, the Smithsonian is the world's largest museum and research complex, consisting of 19 museums and galleries, the National Zoological Park, and nine research facilities. Become an active part of our mission through the Transcription Center. Together, we are discovering secrets hidden deep inside our collections that illuminate our history and our world.

Join us!

The Transcription Center: <https://transcription.si.edu>

On Facebook: <https://www.facebook.com/SmithsonianTranscriptionCenter>

On Twitter: [@TranscribeSI](https://twitter.com/TranscribeSI)

Connect with the Smithsonian

Smithsonian Institution: [www.si.edu](http://www.si.edu)

On Facebook: <https://www.facebook.com/Smithsonian>

On Twitter: [@smithsonian](https://twitter.com/smithsonian)