



**Smithsonian Institution**

*Archives of American Art*

## **Yasuo Kuniyoshi Papers, Artists' Equity Association - Meeting Minutes, Reports, Speeches, 1947-1952**

Extracted on Sep-28-2022 09:26:58

**The Smithsonian Institution thanks all digital volunteers that transcribed and reviewed this material. Your work enriches Smithsonian collections, making them available to anyone with an interest in using them.**

The Smithsonian Institution (the "Smithsonian") provides the content on this website ([transcription.si.edu](https://transcription.si.edu)), other Smithsonian websites, and third-party sites on which it maintains a presence ("SI Websites") in support of its mission for the "increase and diffusion of knowledge." The Smithsonian invites visitors to use its online content for personal, educational and other non-commercial purposes. By using this website, you accept and agree to abide by the [following terms](#).

- If sharing the material in personal and educational contexts, please cite the Archives of American Art as source of the content and the project title as provided at the top of the document. Include the accession number or collection name; when possible, link to the Archives of American Art website.
- If you wish to use this material in a for-profit publication, exhibition, or online project, please contact Archives of American Art or [transcribe@si.edu](mailto:transcribe@si.edu)

For more information on this project and related material, contact the Archives of American Art. [See this project](#) and other collections in the Smithsonian Transcription Center.

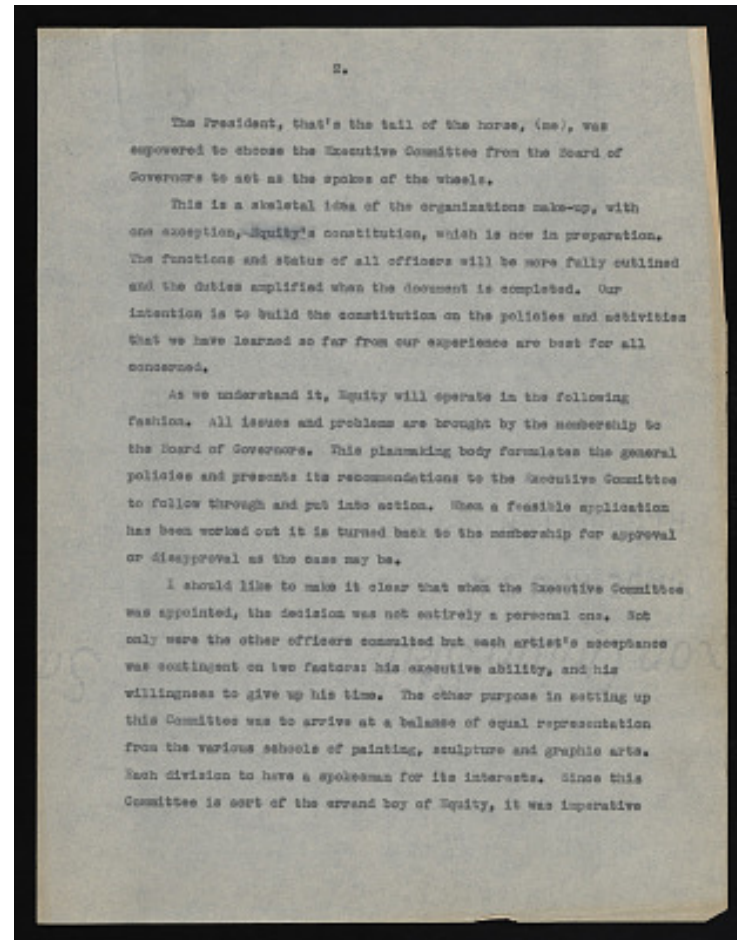
2.

The President, that's the tail of the horse, (me), was empowered to choose the Executive Committee from the Board of Governors to set as the spokes of the wheels.

This is a skeletal idea of the organizations make-up, with one exception, Equity's constitution, which is now in preparation. The functions and status of all officers will be more fully outlined and the duties amplified when the document is completed. Our intention is to build the constitution on the policies and activities that we have learned so far from our experience are best for all concerned.

As we understand it, Equity will operate in the following fashion. All issues and problems are brought by the membership to the Board of Governors. This planmaking body formulates the general policies and presents its recommendations to the Executive Committee to follow through and put into action. When a feasible application has been worked out it is turned back to the membership for approval or disapproval as the case may be.

I should like to make it clear that when the Executive Committee was appointed, the decision was not entirely a personal one. Not only were the other officers consulted but each artist's acceptance was contingent on two factors: his executive ability, and his willingness to give up his time. The other purpose in setting up this Committee was to arrive at a balance of equal representation from the various schools of painting, sculpture and graphic arts. Each division to have a spokesman for its interests. Since this Committee is sort of the errand boy of Equity, it was imperative



Yasuo Kuniyoshi Papers, Artists' Equity Association - Meeting Minutes, Reports, Speeches, 1947-1952  
Transcribed and Reviewed by Digital Volunteers  
Extracted Sep-28-2022 09:26:58



## Smithsonian Institution

*Archives of American Art*

The mission of the Smithsonian is the increase and diffusion of knowledge - shaping the future by preserving our heritage, discovering new knowledge, and sharing our resources with the world. Founded in 1846, the Smithsonian is the world's largest museum and research complex, consisting of 19 museums and galleries, the National Zoological Park, and nine research facilities. Become an active part of our mission through the Transcription Center. Together, we are discovering secrets hidden deep inside our collections that illuminate our history and our world.

Join us!

The Transcription Center: <https://transcription.si.edu>

On Facebook: <https://www.facebook.com/SmithsonianTranscriptionCenter>

On Twitter: [@TranscribeSI](https://twitter.com/TranscribeSI)

Connect with the Smithsonian

Smithsonian Institution: [www.si.edu](http://www.si.edu)

On Facebook: <https://www.facebook.com/Smithsonian>

On Twitter: [@smithsonian](https://twitter.com/smithsonian)