



Smithsonian Institution

Archives of American Art

Yasuo Kuniyoshi Papers, Artists' Equity Association - Meeting Minutes, Reports, Speeches, 1947-1952

Extracted on Sep-28-2022 09:08:57

The Smithsonian Institution thanks all digital volunteers that transcribed and reviewed this material. Your work enriches Smithsonian collections, making them available to anyone with an interest in using them.

The Smithsonian Institution (the "Smithsonian") provides the content on this website (transcription.si.edu), other Smithsonian websites, and third-party sites on which it maintains a presence ("SI Websites") in support of its mission for the "increase and diffusion of knowledge." The Smithsonian invites visitors to use its online content for personal, educational and other non-commercial purposes. By using this website, you accept and agree to abide by the [following terms](#).

- If sharing the material in personal and educational contexts, please cite the Archives of American Art as source of the content and the project title as provided at the top of the document. Include the accession number or collection name; when possible, link to the Archives of American Art website.
- If you wish to use this material in a for-profit publication, exhibition, or online project, please contact Archives of American Art or transcribe@si.edu

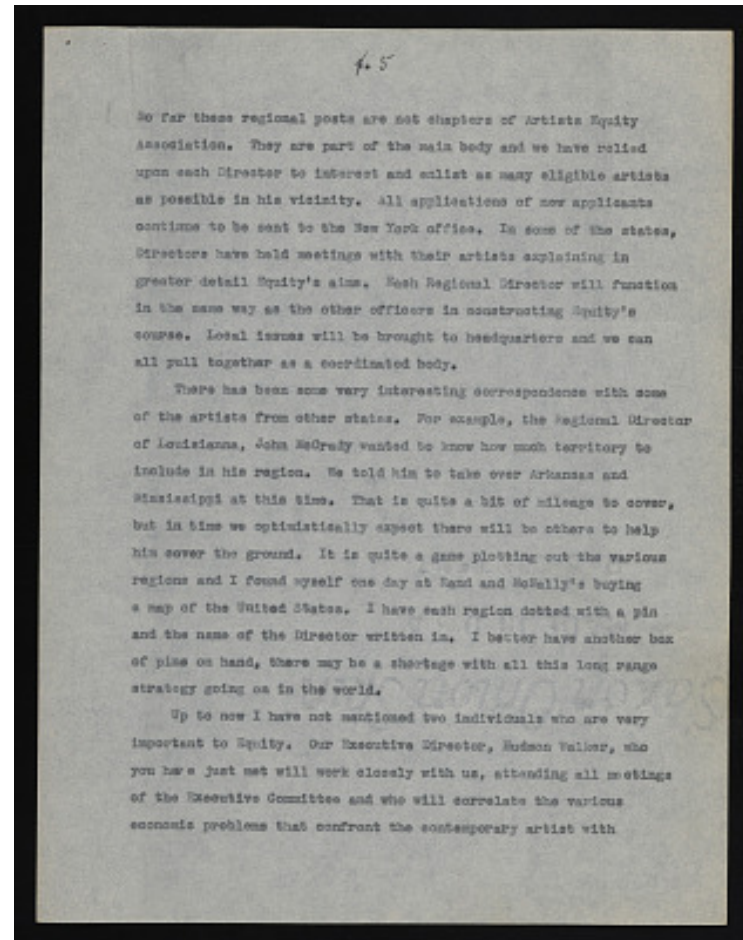
For more information on this project and related material, contact the Archives of American Art. [See this project](#) and other collections in the Smithsonian Transcription Center.

~~4.~~ ~~5~~

So far these regional posts are not chapters of Artists Equity Association. They are part of the main body and we have relied upon each Director to interest and enlist as many eligible artists as possible in his vicinity. All applications of our new applicants continue to be sent to the New York office. In some of the states, Directors have held meetings with their artists explaining in greater detail Equity's aims. Each Regional Director will function in the same way as the other officers in constructing Equity's course. Local issues will be brought to headquarters and we can all pull together as a coordinated body.

There has been some very interesting correspondence with some of the artists from other states. For example, the Regional Director of Louisiana, John McCrady wanted to know how much territory to include in his region. We told him to take over Arkansas and Mississippi at this time. That is quite a bit of mileage to cover, but in time we optimistically expect there will be others to help him cover the ground. It is quite a game plotting out the various regions and I found myself one day at Rand and McNally's buying a map of the United States. I have each region dotted with a pin and the name of the Director written in. I better have another box of pins on hand, there may be a shortage with all this long range strategy going on in the world.

Up to now I have not mentioned two individuals who are very important to Equity. Our Executive Director, Hudson Walker, who you have just met will work closely with us, attending all meetings of the Executive Committee and who will correlate the various economic problems that confront the contemporary artist with



Yasuo Kuniyoshi Papers, Artists' Equity Association - Meeting Minutes, Reports, Speeches, 1947-1952
Transcribed and Reviewed by Digital Volunteers
Extracted Sep-28-2022 09:08:57



Smithsonian Institution

Archives of American Art

The mission of the Smithsonian is the increase and diffusion of knowledge - shaping the future by preserving our heritage, discovering new knowledge, and sharing our resources with the world. Founded in 1846, the Smithsonian is the world's largest museum and research complex, consisting of 19 museums and galleries, the National Zoological Park, and nine research facilities. Become an active part of our mission through the Transcription Center. Together, we are discovering secrets hidden deep inside our collections that illuminate our history and our world.

Join us!

The Transcription Center: <https://transcription.si.edu>

On Facebook: <https://www.facebook.com/SmithsonianTranscriptionCenter>

On Twitter: [@TranscribeSI](https://twitter.com/TranscribeSI)

Connect with the Smithsonian

Smithsonian Institution: www.si.edu

On Facebook: <https://www.facebook.com/Smithsonian>

On Twitter: [@smithsonian](https://twitter.com/smithsonian)