



Smithsonian Institution

Archives of American Art

Yasuo Kuniyoshi Papers, Artists' Equity Association - Meeting Minutes, Reports, Speeches, 1947-1952

Extracted on Apr-17-2024 05:55:56

The Smithsonian Institution thanks all digital volunteers that transcribed and reviewed this material. Your work enriches Smithsonian collections, making them available to anyone with an interest in using them.

The Smithsonian Institution (the "Smithsonian") provides the content on this website (transcription.si.edu), other Smithsonian websites, and third-party sites on which it maintains a presence ("SI Websites") in support of its mission for the "increase and diffusion of knowledge." The Smithsonian invites visitors to use its online content for personal, educational and other non-commercial purposes. By using this website, you accept and agree to abide by the [following terms](#).

- If sharing the material in personal and educational contexts, please cite the Archives of American Art as source of the content and the project title as provided at the top of the document. Include the accession number or collection name; when possible, link to the Archives of American Art website.
- If you wish to use this material in a for-profit publication, exhibition, or online project, please contact Archives of American Art or transcribe@si.edu

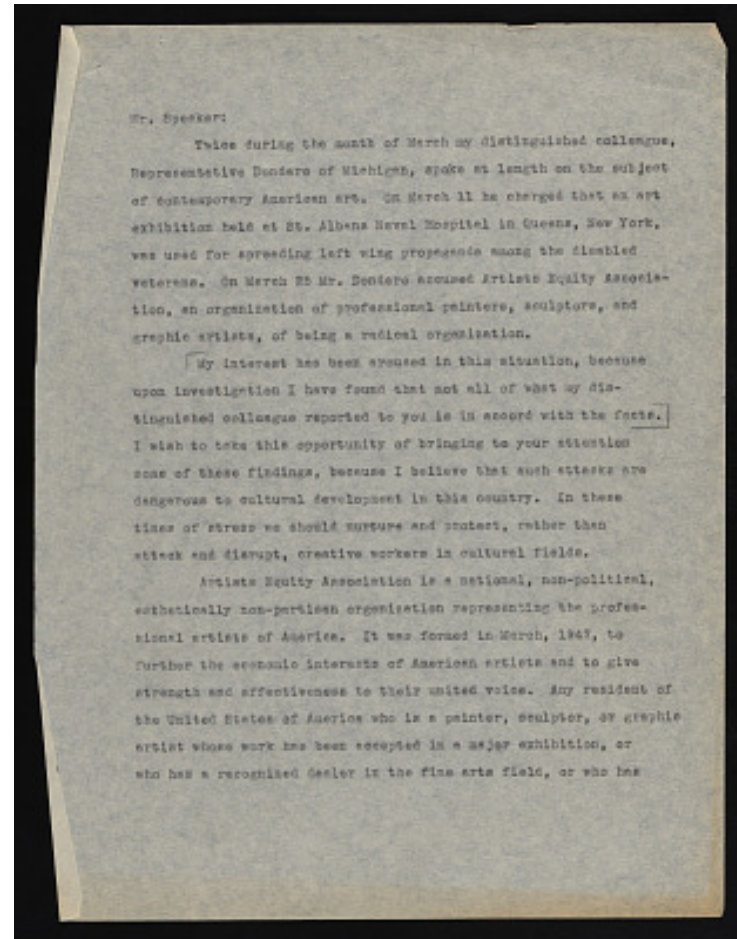
For more information on this project and related material, contact the Archives of American Art. [See this project](#) and other collections in the Smithsonian Transcription Center.

Mr. Speaker:

Twice during the month of March my distinguished colleague, Representative Dondero of Michigan, spoke at length on the subject of contemporary American art. On March 11 he charged that an art exhibition held at St. Albans Naval Hospital in Queens, New York, was used for spreading left wing propaganda among the disabled veterans. On March 25 Mr. Dondero accused Artists Equity Association, an organization of professional painters, sculptors, and graphic artists, of being a radical organization.

My interest has been aroused in this situation, because upon investigation I have found that not all of what my distinguished colleague reported to you is in accord with the facts. I wish to take this opportunity of bringing to your attention some of these findings, because I believe that such attacks are dangerous to cultural development in this country. In these times of stress we should nurture and protect, rather than attack and disrupt, creative workers in cultural fields.

Artists Equity Association is a national, non-political, esthetically non-partisan organization representing the professional artists of America. It was formed in March, 1947, to further the economic interests of American artists and to give strength and effectiveness to their united voice. Any resident of the United States of America who is a painter, sculptor, or graphic artist whose work has been accepted in a major exhibition, or who has a recognized dealer in the fine arts field, or who has



Yasuo Kuniyoshi Papers, Artists' Equity Association - Meeting Minutes, Reports, Speeches, 1947-1952
Transcribed and Reviewed by Digital Volunteers
Extracted Apr-17-2024 05:55:56



Smithsonian Institution

Archives of American Art

The mission of the Smithsonian is the increase and diffusion of knowledge - shaping the future by preserving our heritage, discovering new knowledge, and sharing our resources with the world. Founded in 1846, the Smithsonian is the world's largest museum and research complex, consisting of 19 museums and galleries, the National Zoological Park, and nine research facilities. Become an active part of our mission through the Transcription Center. Together, we are discovering secrets hidden deep inside our collections that illuminate our history and our world.

Join us!

The Transcription Center: <https://transcription.si.edu>

On Facebook: <https://www.facebook.com/SmithsonianTranscriptionCenter>

On Twitter: [@TranscribeSI](https://twitter.com/TranscribeSI)

Connect with the Smithsonian

Smithsonian Institution: www.si.edu

On Facebook: <https://www.facebook.com/Smithsonian>

On Twitter: [@smithsonian](https://twitter.com/smithsonian)