



**Smithsonian Institution**

*Archives of American Art*

## **Mel Casas papers: Exhibition Announcements and Catalogs, 1979**

Extracted on Mar-28-2024 10:38:31

**The Smithsonian Institution thanks all digital volunteers that transcribed and reviewed this material. Your work enriches Smithsonian collections, making them available to anyone with an interest in using them.**

The Smithsonian Institution (the "Smithsonian") provides the content on this website ([transcription.si.edu](https://transcription.si.edu)), other Smithsonian websites, and third-party sites on which it maintains a presence ("SI Websites") in support of its mission for the "increase and diffusion of knowledge." The Smithsonian invites visitors to use its online content for personal, educational and other non-commercial purposes. By using this website, you accept and agree to abide by the [following terms](#).

- If sharing the material in personal and educational contexts, please cite the Archives of American Art as source of the content and the project title as provided at the top of the document. Include the accession number or collection name; when possible, link to the Archives of American Art website.
- If you wish to use this material in a for-profit publication, exhibition, or online project, please contact Archives of American Art or [transcribe@si.edu](mailto:transcribe@si.edu)

For more information on this project and related material, contact the Archives of American Art. [See this project](#) and other collections in the Smithsonian Transcription Center.

2.

What does this bring us to?

This:

I have made a proposal to the Contemporary Arts Museum of Houston in which I asked them to let me curate a statewide show. They have agreed. The show will open on February 16, 1979.

Now what form is the show to take?

First, I want to have a name for the show. In real it is a Texas survey show but I don't want to call it that. There have been so many shows over the past few years that were called Texas this or Texas that, that I just don't want to stick the word TEXAS in it.

Also, I want the show to have a theme, which is like jumping in a pit of snakes. What theme ties us all together? We have been geographically scattered, split and divided into factional camps, that a Texas look or theme would be hard to pin-point.

So then, what to call it?

What is the common denominator that will hold us all together?

I have decided to use the theme of fire, and call this show FIRE.

Fire representing our creative energy. We each have our own brand of fire. Our art is kindling and a necessary component for the cultural glaze.

A year or so ago, the CAM was struck by a terrible flood. The flood brought destruction and change. Let FIRE be as strong and let the change it brings mark a new beginning. We're coming through the front door.

It has been said before that Texas has all the ingredients for the pie.

Let the CAM be the oven.

Let us add the heat.

As to how the pie will be sliced

is for the critic to say,

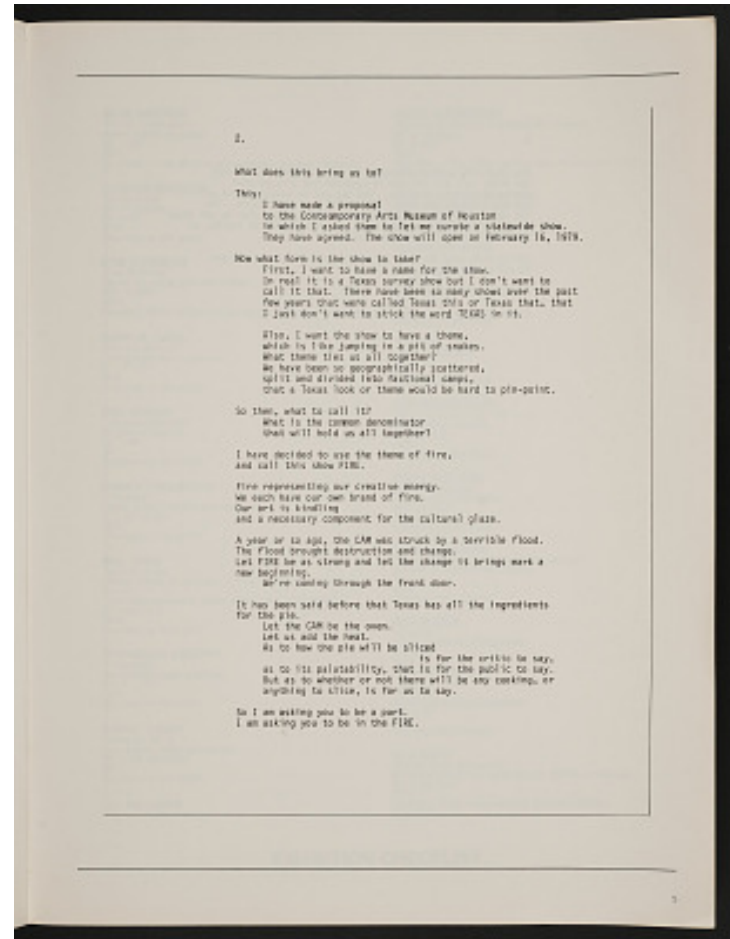
as to its palatability, that

is for the public to say.

But as to whether or not there will be any cooking, or anything to slice, is for us to say.

So I am asking you to be a part.  
I am asking you to be in the FIRE.

5



Mel Casas papers: Exhibition Announcements and Catalogs, 1979  
Transcribed and Reviewed by Digital Volunteers  
Extracted Mar-28-2024 10:38:31



## Smithsonian Institution

*Archives of American Art*

The mission of the Smithsonian is the increase and diffusion of knowledge - shaping the future by preserving our heritage, discovering new knowledge, and sharing our resources with the world. Founded in 1846, the Smithsonian is the world's largest museum and research complex, consisting of 19 museums and galleries, the National Zoological Park, and nine research facilities. Become an active part of our mission through the Transcription Center. Together, we are discovering secrets hidden deep inside our collections that illuminate our history and our world.

Join us!

The Transcription Center: <https://transcription.si.edu>

On Facebook: <https://www.facebook.com/SmithsonianTranscriptionCenter>

On Twitter: [@TranscribeSI](https://twitter.com/TranscribeSI)

Connect with the Smithsonian

Smithsonian Institution: [www.si.edu](http://www.si.edu)

On Facebook: <https://www.facebook.com/Smithsonian>

On Twitter: [@smithsonian](https://twitter.com/smithsonian)