



Smithsonian Institution

Archives of American Art

Naúl Ojeda papers, Exhibition and Gallery files: School 33 Art Center, Exhibition and Workshop, 1999-2001

Extracted on Apr-19-2024 03:44:28

The Smithsonian Institution thanks all digital volunteers that transcribed and reviewed this material. Your work enriches Smithsonian collections, making them available to anyone with an interest in using them.

The Smithsonian Institution (the "Smithsonian") provides the content on this website (transcription.si.edu), other Smithsonian websites, and third-party sites on which it maintains a presence ("SI Websites") in support of its mission for the "increase and diffusion of knowledge." The Smithsonian invites visitors to use its online content for personal, educational and other non-commercial purposes. By using this website, you accept and agree to abide by the [following terms](#).

- If sharing the material in personal and educational contexts, please cite the Archives of American Art as source of the content and the project title as provided at the top of the document. Include the accession number or collection name; when possible, link to the Archives of American Art website.
- If you wish to use this material in a for-profit publication, exhibition, or online project, please contact Archives of American Art or transcribe@si.edu

For more information on this project and related material, contact the Archives of American Art. [See this project](#) and other collections in the Smithsonian Transcription Center.

MARYLAND STATE ARTS COUNCIL
NEW INCENTIVE GRANT -FY2001
School 33 Art Center

4. Describe the community or communities addressed by your project and how they will be included in planning and implementation.

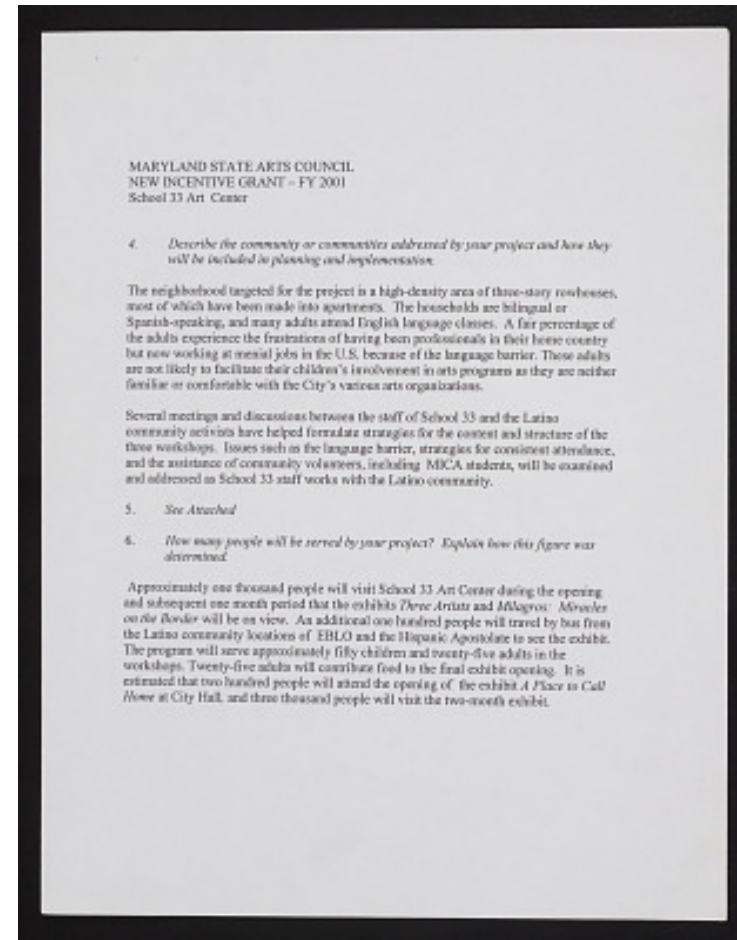
The neighborhood targeted for the project is a high-density area of three-story rowhouses, most of which have been made into apartments. The households are bilingual or Spanish-speaking, and many adults attended English language classes. A fair percentage of the adults experience the frustration of having been professionals in their home country but now working at menial jobs in the U.S. because of the language barrier. These adults are not likely to facilitate their children's involvement in arts programs as they are neither familiar or comfortable with the City's various arts organizations.

Several meetings and discussions between the staff at School 33 and the Latino community activists have helped formulate strategies for the content and structure of the three workshops. Issues such as the language barrier, strategies for consistent attendance, and the assistance of community volunteers, including MICA students, will be examined and addressed as School 33 staff works with the Latino community.

5. See Attached

6. How many people will be served by your project? Explain how this figure was determined.

Approximately one thousand people will visit School 33 Art Center during the opening and subsequent one month period that the exhibits *Three Artists and Milagros: Miracles on the Border* will be on view. An additional one hundred people will travel by bus from the Latino community locations of EBLO and the Hispanic Apostolate to see the exhibit. The program will serve approximately fifty children and twenty-five adults in the workshops. Twenty-five adults will contribute food to the final exhibit opening. It is estimated that two hundred people will attend the opening of the exhibit *A Place to Call Home* at City Hall, and three thousand people will visit the two-month exhibit.



Naúl Ojeda papers, Exhibition and Gallery files: School 33 Art Center, Exhibition and Workshop, 1999-2001
Transcribed and Reviewed by Digital Volunteers
Extracted Apr-19-2024 03:44:28



Smithsonian Institution

Archives of American Art

The mission of the Smithsonian is the increase and diffusion of knowledge - shaping the future by preserving our heritage, discovering new knowledge, and sharing our resources with the world. Founded in 1846, the Smithsonian is the world's largest museum and research complex, consisting of 19 museums and galleries, the National Zoological Park, and nine research facilities. Become an active part of our mission through the Transcription Center. Together, we are discovering secrets hidden deep inside our collections that illuminate our history and our world.

Join us!

The Transcription Center: <https://transcription.si.edu>

On Facebook: <https://www.facebook.com/SmithsonianTranscriptionCenter>

On Twitter: [@TranscribeSI](https://twitter.com/TranscribeSI)

Connect with the Smithsonian

Smithsonian Institution: www.si.edu

On Facebook: <https://www.facebook.com/Smithsonian>

On Twitter: [@smithsonian](https://twitter.com/smithsonian)