



**Smithsonian Institution**

*Archives of American Art*

## **Celebrating 175: Lewis Hine, Elizabeth McCausland Files, Correspondence, 1938**

Extracted on Dec-08-2022 03:50:04

**The Smithsonian Institution thanks all digital volunteers that transcribed and reviewed this material. Your work enriches Smithsonian collections, making them available to anyone with an interest in using them.**

The Smithsonian Institution (the "Smithsonian") provides the content on this website ([transcription.si.edu](https://transcription.si.edu)), other Smithsonian websites, and third-party sites on which it maintains a presence ("SI Websites") in support of its mission for the "increase and diffusion of knowledge." The Smithsonian invites visitors to use its online content for personal, educational and other non-commercial purposes. By using this website, you accept and agree to abide by the [following terms](#).

- If sharing the material in personal and educational contexts, please cite the Archives of American Art as source of the content and the project title as provided at the top of the document. Include the accession number or collection name; when possible, link to the Archives of American Art website.
- If you wish to use this material in a for-profit publication, exhibition, or online project, please contact Archives of American Art or [transcribe@si.edu](mailto:transcribe@si.edu)

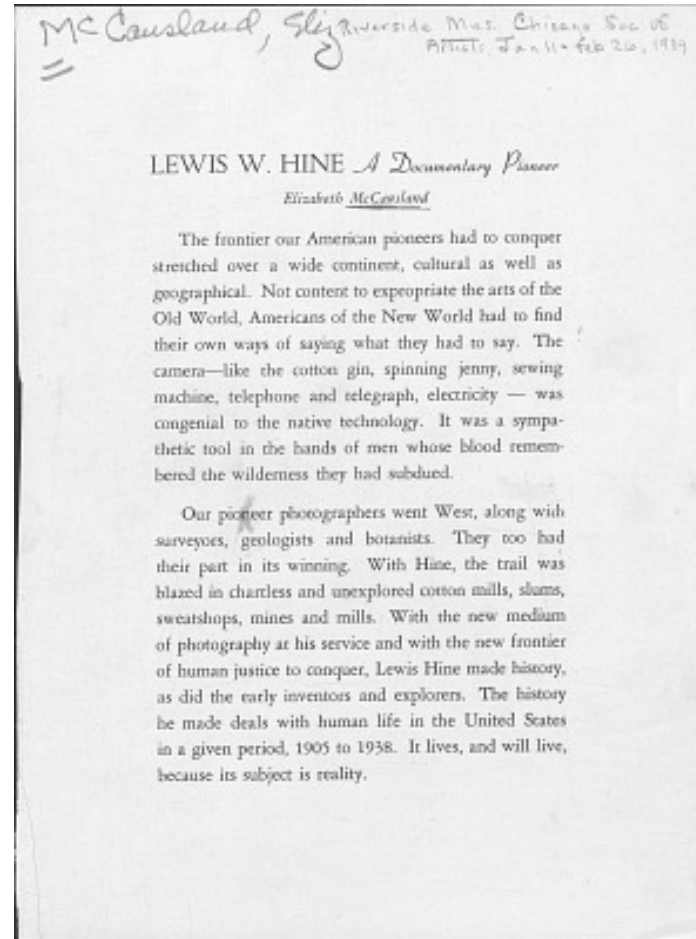
For more information on this project and related material, contact the Archives of American Art. [See this project](#) and other collections in the Smithsonian Transcription Center.

McCausland, Eliz Riverside Mus. Chicago Soc. of Artists. Jan 11-feb 26, 1939

Lewis W. Hine A Documentary Pioneer  
Elizabeth McCausland

The frontier our American pioneers had to conquer stretched over a wide continent, cultural as well as geographical. Not content to expropriate the arts of the Old World, Americans of the New World had to find their own ways of saying what they had to say. The camera—like the cotton gin, spinning jenny, sewing machine, telephone and telegraph, electricity — was congenial to the native technology. It was a sympathetic tool in the hands of men whose blood remembered the wilderness they had subdued.

Our pioneer photographers went West, along with surveyors, geologists and botanists. They too had their part in its winning. With Hine, the trail was blazed in chartless and unexplored cotton mills, slums, sweatshops, mines and mills. With the new medium of photography at his service and with the new frontier of human justice to conquer, Lewis Hine made history, as did the early inventors and explorers. The history he made deals with human life in the United States in a given period, 1905 to 1938. It lives, and will live, because its subject is reality.



Celebrating 175: Lewis Hine, Elizabeth McCausland Files, Correspondence, 1938  
Transcribed and Reviewed by Digital Volunteers  
Extracted Dec-08-2022 03:50:04



## Smithsonian Institution

*Archives of American Art*

The mission of the Smithsonian is the increase and diffusion of knowledge - shaping the future by preserving our heritage, discovering new knowledge, and sharing our resources with the world. Founded in 1846, the Smithsonian is the world's largest museum and research complex, consisting of 19 museums and galleries, the National Zoological Park, and nine research facilities. Become an active part of our mission through the Transcription Center. Together, we are discovering secrets hidden deep inside our collections that illuminate our history and our world.

Join us!

The Transcription Center: <https://transcription.si.edu>

On Facebook: <https://www.facebook.com/SmithsonianTranscriptionCenter>

On Twitter: [@TranscribeSI](https://twitter.com/TranscribeSI)

Connect with the Smithsonian

Smithsonian Institution: [www.si.edu](http://www.si.edu)

On Facebook: <https://www.facebook.com/Smithsonian>

On Twitter: [@smithsonian](https://twitter.com/smithsonian)