



Smithsonian Institution

Archives of American Art

Celebrating 175: Ray Yoshida, Gallery File, Phyllis Kind Gallery, 1975, 1980-1998

Extracted on Apr-17-2024 11:49:07

The Smithsonian Institution thanks all digital volunteers that transcribed and reviewed this material. Your work enriches Smithsonian collections, making them available to anyone with an interest in using them.

The Smithsonian Institution (the "Smithsonian") provides the content on this website (transcription.si.edu), other Smithsonian websites, and third-party sites on which it maintains a presence ("SI Websites") in support of its mission for the "increase and diffusion of knowledge." The Smithsonian invites visitors to use its online content for personal, educational and other non-commercial purposes. By using this website, you accept and agree to abide by the [following terms](#).

- If sharing the material in personal and educational contexts, please cite the Archives of American Art as source of the content and the project title as provided at the top of the document. Include the accession number or collection name; when possible, link to the Archives of American Art website.
- If you wish to use this material in a for-profit publication, exhibition, or online project, please contact Archives of American Art or transcribe@si.edu

For more information on this project and related material, contact the Archives of American Art. [See this project](#) and other collections in the Smithsonian Transcription Center.

YOSHIDA, Bibliography, cont. page two

Books and Catalogues, cont....

Halstead, Whitney. Illinois Painters II 1971-1972. Chicago: Illinois Arts Council, 1971. Traveling exhibition. pg. 2.

Illinois Arts Council. Koffler Foundation Collection. Chicago: The Illinois Arts Council, 1976. Essay by Dennis Adrian.

Illinois State University, Center for Visual Arts Gallery. Illinois Artists/1976. Normal, Illinois: Illinois State University, 1976.

Indianapolis Museum of Art, Contemporary Art Society. Painting and Sculpture Today/1976. Indianapolis: Indianapolis Museum of Art, 1980. pg. 57.

Painting and Sculpture Today/1972. Indianapolis: Indianapolis Museum of Art, 1972.

Institute of Contemporary Arts, London, England. Comic Iconoclasm. London, England: Institute of Contemporary Arts, 1987. Preface by Iwona Blazwick. Essays by Sheena Wagstaff, Umberto Eco, Dan Graham, John Ashbery, and David Deitcher.

The Main Bank of Chicago. The Art in the Main Bank of Chicago. Essay by Franz Schulze.

Museum of Contemporary Art. Chicago Imagist Art. Chicago: Museum of Contemporary Art. Essay by Franz Schulze.

N.A.M.E. Gallery, Chicago. Ray Yoshida. Essay by Dennis Adrian.

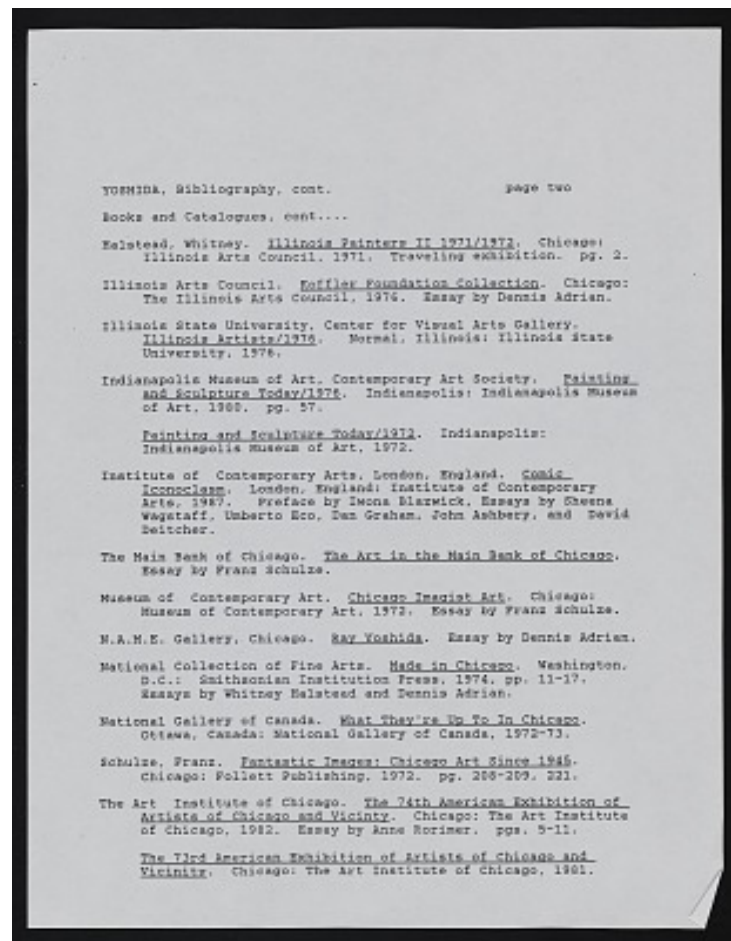
National Collection of Fine Arts. Made in Chicago. Washington, D.C.: Smithsonian Institution Press, 1974, pp. 11-17. Essays by Whitney Halstead and Dennis Adrian.

National Gallery of Canada. What They're Up To In Chicago. Ottawa, Canada: National Gallery of Canada, 1972-73.

Schulze, Franz. Fantastic Images: Chicago Art Since 1945. Chicago: Follett Publishing, 1972. pg. 208-209, 221.

The Art Institute of Chicago. The 74th American Exhibition of Artists of Chicago and Vicinity. Chicago: The Art Institute of Chicago, 1982. Essay by Anne Rorimer. pgs. 5-11.

The 73rd American Exhibition of Artists of Chicago and Vicinity. Chicago: The Art Institute of Chicago, 1981.



Celebrating 175: Ray Yoshida, Gallery File, Phyllis Kind Gallery, 1975, 1980-1998
Transcribed and Reviewed by Digital Volunteers
Extracted Apr-17-2024 11:49:07



Smithsonian Institution

Archives of American Art

The mission of the Smithsonian is the increase and diffusion of knowledge - shaping the future by preserving our heritage, discovering new knowledge, and sharing our resources with the world. Founded in 1846, the Smithsonian is the world's largest museum and research complex, consisting of 19 museums and galleries, the National Zoological Park, and nine research facilities. Become an active part of our mission through the Transcription Center. Together, we are discovering secrets hidden deep inside our collections that illuminate our history and our world.

Join us!

The Transcription Center: <https://transcription.si.edu>

On Facebook: <https://www.facebook.com/SmithsonianTranscriptionCenter>

On Twitter: [@TranscribeSI](https://twitter.com/TranscribeSI)

Connect with the Smithsonian

Smithsonian Institution: www.si.edu

On Facebook: <https://www.facebook.com/Smithsonian>

On Twitter: [@smithsonian](https://twitter.com/smithsonian)