



**Smithsonian Institution**

*Archives of American Art*

## **Celebrating 175: Mel Casas, Exhibition Announcements and Catalogs, 1971-1974**

Extracted on Apr-23-2024 11:14:33

**The Smithsonian Institution thanks all digital volunteers that transcribed and reviewed this material. Your work enriches Smithsonian collections, making them available to anyone with an interest in using them.**

The Smithsonian Institution (the "Smithsonian") provides the content on this website ([transcription.si.edu](https://transcription.si.edu)), other Smithsonian websites, and third-party sites on which it maintains a presence ("SI Websites") in support of its mission for the "increase and diffusion of knowledge." The Smithsonian invites visitors to use its online content for personal, educational and other non-commercial purposes. By using this website, you accept and agree to abide by the [following terms](#).

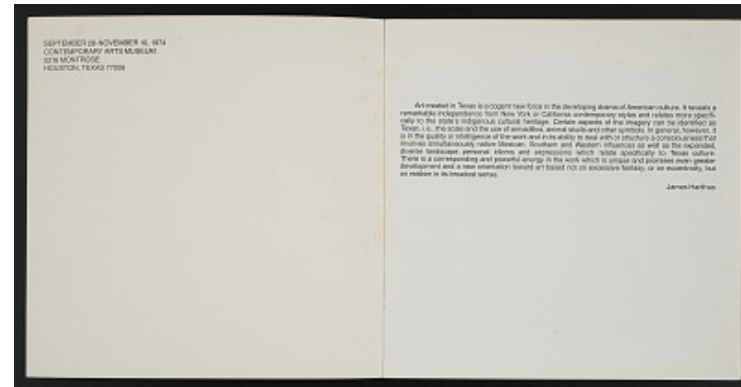
- If sharing the material in personal and educational contexts, please cite the Archives of American Art as source of the content and the project title as provided at the top of the document. Include the accession number or collection name; when possible, link to the Archives of American Art website.
- If you wish to use this material in a for-profit publication, exhibition, or online project, please contact Archives of American Art or [transcribe@si.edu](mailto:transcribe@si.edu)

For more information on this project and related material, contact the Archives of American Art. [See this project](#) and other collections in the Smithsonian Transcription Center.

SEPTEMBER 28 - NOVEMBER 10, 1974  
CONTEMPORARY ARTS MUSEUM  
5216 MONTROSE  
HOUSTON, TEXAS 77066

Art created in Texas is a cogent new force in the developing drama of American culture. It reveals a remarkable independence from New York or California contemporary styles and relates more specifically to the state's indigenous cultural heritage. Certain aspects of the imagery can be identified as Texas, i.e., the scale and the use of armadillos, animal skulls and other symbols. In general, however, it is in the quality or intelligence of the work and in its ability to deal with or structure a consciousness that involves simultaneously native Mexican, Southern and Western influences as well as the expanded, diverse landscape, personal idioms and expressions which relate specifically to Texas culture. There is a corresponding and powerful energy in the work which is unique and promises even greater development and a new orientation toward art based not on excessive fantasy, or on eccentricity, but on realism in its broadest sense.

James Harithas



Celebrating 175: Mel Casas, Exhibition Announcements and Catalogs, 1971-1974  
Transcribed and Reviewed by Digital Volunteers  
Extracted Apr-23-2024 11:14:33



## Smithsonian Institution

*Archives of American Art*

The mission of the Smithsonian is the increase and diffusion of knowledge - shaping the future by preserving our heritage, discovering new knowledge, and sharing our resources with the world. Founded in 1846, the Smithsonian is the world's largest museum and research complex, consisting of 19 museums and galleries, the National Zoological Park, and nine research facilities. Become an active part of our mission through the Transcription Center. Together, we are discovering secrets hidden deep inside our collections that illuminate our history and our world.

Join us!

The Transcription Center: <https://transcription.si.edu>

On Facebook: <https://www.facebook.com/SmithsonianTranscriptionCenter>

On Twitter: [@TranscribeSI](https://twitter.com/TranscribeSI)

Connect with the Smithsonian

Smithsonian Institution: [www.si.edu](http://www.si.edu)

On Facebook: <https://www.facebook.com/Smithsonian>

On Twitter: [@smithsonian](https://twitter.com/smithsonian)