



Smithsonian Institution

Archives of American Art

Celebrating 175: Prentiss Taylor, Biographical Accounts, 1954-1985, undated

Extracted on Apr-19-2024 01:05:13

The Smithsonian Institution thanks all digital volunteers that transcribed and reviewed this material. Your work enriches Smithsonian collections, making them available to anyone with an interest in using them.

The Smithsonian Institution (the "Smithsonian") provides the content on this website (transcription.si.edu), other Smithsonian websites, and third-party sites on which it maintains a presence ("SI Websites") in support of its mission for the "increase and diffusion of knowledge." The Smithsonian invites visitors to use its online content for personal, educational and other non-commercial purposes. By using this website, you accept and agree to abide by the [following terms](#).

- If sharing the material in personal and educational contexts, please cite the Archives of American Art as source of the content and the project title as provided at the top of the document. Include the accession number or collection name; when possible, link to the Archives of American Art website.
- If you wish to use this material in a for-profit publication, exhibition, or online project, please contact Archives of American Art or transcribe@si.edu

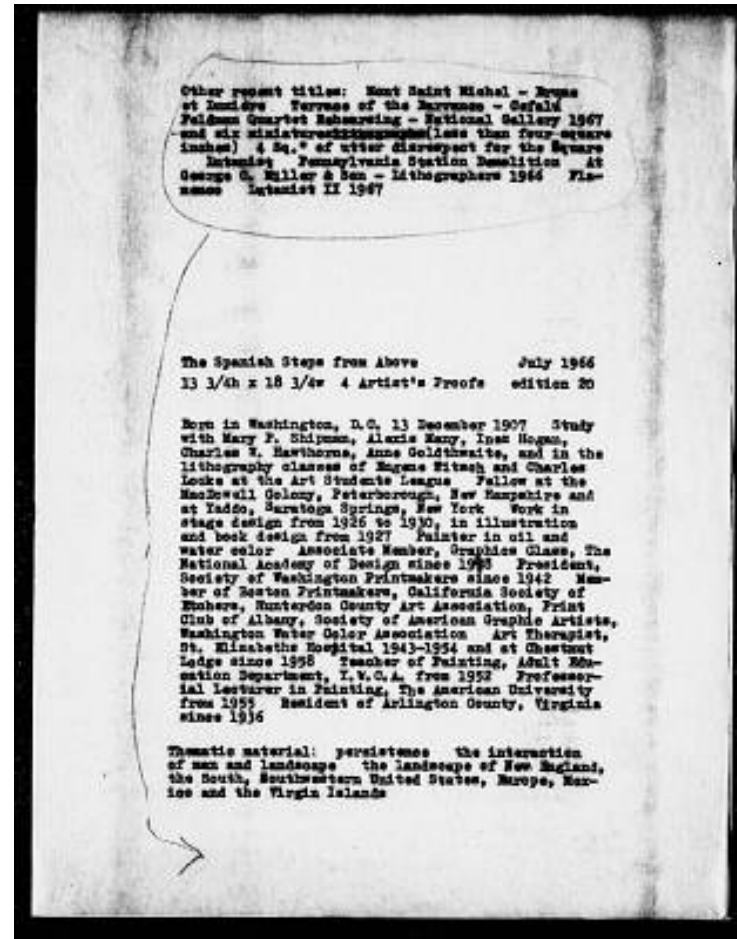
For more information on this project and related material, contact the Archives of American Art. [See this project](#) and other collections in the Smithsonian Transcription Center.

The Spanish Step from Above July 1966
13 3/4" x 18 3/4" 4 Artist's Proofs edition 20

Born in Washington, D.C. 13 December 1907 Study with Mary P. Shipman, Alexis Many, Ines Hogan, Charles W. Hawthorne, Anne Goldthwaite, and in the lithography classes of Eugene Fitch and Charles Locke at the Art Students League Fellow at the MacDowell Colony, Peterborough, New Hampshire and at Yaddo, Saratoga Springs, New York Work in stage design from 1926 to 1930, in illustration and book design from 1927 Painter in oil and water color Associate Member, Graphics Class, The National Academy of design since 1948 President, Society of Washington Printmakers since 1942 Member of the Boston Printmakers, California Society of Etchers, Hunterdon County Art Association, Print Club of Albany, Society of American Graphic Artists, Washington Water Color Association Art Therapist, St. Elizabeths Hospital 1943-1954 and at Chestnut Lodge since 1958 Teacher of Painting, Adult Education Department, Y.W.C.A. from 1952 Professorial Lecturer in Painting, The American University from 1955 Resident of Arlington County, Virginia since 1936

Thematic Material: persistence the interaction of man and landscape the landscape of New England, the South, Southwestern United States, Europe, Mexico and the Virgin Islands

Other recent titles: Mont Saint Michel - Brume et Lumière Terrace of the Barranco - Gefalú Feldman Quartet Rehearsing - National Gallery 1967 and six miniatures (less than four square inches) 4 Sq. " of utter disrespect for the Square Lutanist Pennsylvania Station Demolition At George C. Miller & Son - Lithographers 1966 Fla-menee Lutanist II 1967



Celebrating 175: Prentiss Taylor, Biographical Accounts, 1954-1985, undated
Transcribed and Reviewed by Digital Volunteers
Extracted Apr-19-2024 01:05:13



Smithsonian Institution

Archives of American Art

The mission of the Smithsonian is the increase and diffusion of knowledge - shaping the future by preserving our heritage, discovering new knowledge, and sharing our resources with the world. Founded in 1846, the Smithsonian is the world's largest museum and research complex, consisting of 19 museums and galleries, the National Zoological Park, and nine research facilities. Become an active part of our mission through the Transcription Center. Together, we are discovering secrets hidden deep inside our collections that illuminate our history and our world.

Join us!

The Transcription Center: <https://transcription.si.edu>

On Facebook: <https://www.facebook.com/SmithsonianTranscriptionCenter>

On Twitter: [@TranscribeSI](https://twitter.com/TranscribeSI)

Connect with the Smithsonian

Smithsonian Institution: www.si.edu

On Facebook: <https://www.facebook.com/Smithsonian>

On Twitter: [@smithsonian](https://twitter.com/smithsonian)