



Smithsonian Institution

Archives of American Art

Celebrating 175: Wallace Berman, involved with the Temple of Man, Magic Theatre (New Magic Theatre), circa 1967

Extracted on Feb-06-2023 07:53:33

The Smithsonian Institution thanks all digital volunteers that transcribed and reviewed this material. Your work enriches Smithsonian collections, making them available to anyone with an interest in using them.

The Smithsonian Institution (the "Smithsonian") provides the content on this website (transcription.si.edu), other Smithsonian websites, and third-party sites on which it maintains a presence ("SI Websites") in support of its mission for the "increase and diffusion of knowledge." The Smithsonian invites visitors to use its online content for personal, educational and other non-commercial purposes. By using this website, you accept and agree to abide by the [following terms](#).

- If sharing the material in personal and educational contexts, please cite the Archives of American Art as source of the content and the project title as provided at the top of the document. Include the accession number or collection name; when possible, link to the Archives of American Art website.
- If you wish to use this material in a for-profit publication, exhibition, or online project, please contact Archives of American Art or transcribe@si.edu

For more information on this project and related material, contact the Archives of American Art. [See this project](#) and other collections in the Smithsonian Transcription Center.

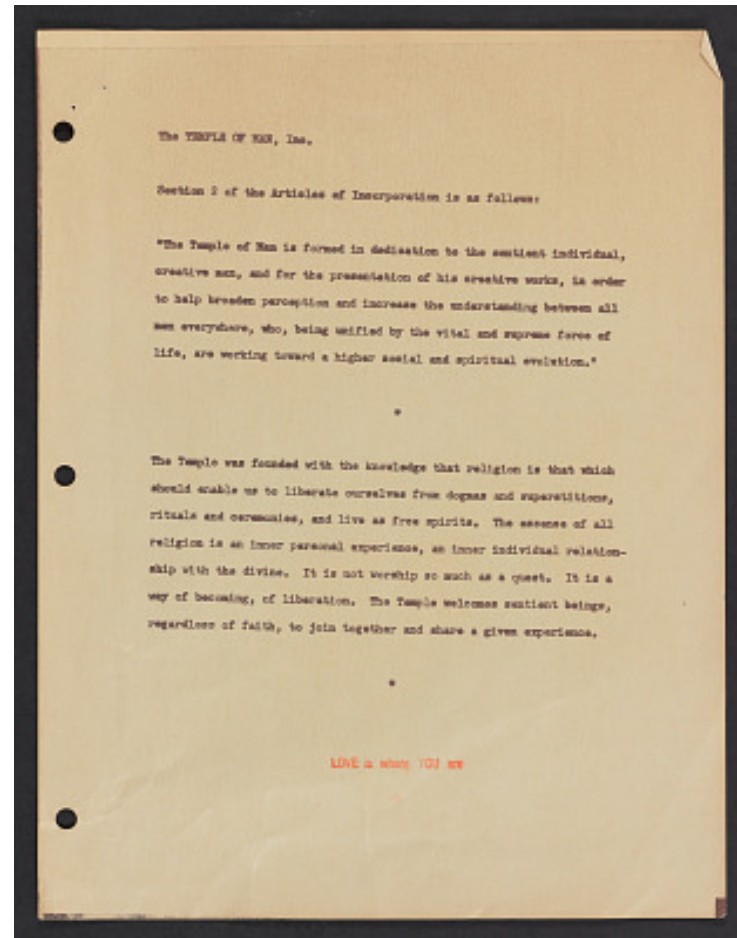
The TEMPLE OF MAN, Inc.

Section 2 of the Articles of Incorporation is as follows:

"The Temple of Man is formed in dedication to the sentient individual, creative man, and for the presentation of his creative works, in order to help broaden perception and increase the understanding between all men everywhere, who, being unified by the vital and supreme force of life, are working toward a higher social and spiritual evolution."

The Temple was founded with the knowledge that religion is that which should enable us to liberate ourselves from dogmas and superstitions, rituals and ceremonies, and live as free spirits. The essence of all religion is an inner personal experience, an inner individual relationship with the divine. It is not worship so much as a quest. It is a way of becoming, of liberation. The Temple welcomes sentient beings, regardless of faith, to join together and share a given experience.

LOVE is where YOU are



Celebrating 175: Wallace Berman, involved with the Temple of Man, Magic Theatre (New Magic Theatre), circa 1967
Transcribed and Reviewed by Digital Volunteers
Extracted Feb-06-2023 07:53:33



Smithsonian Institution

Archives of American Art

The mission of the Smithsonian is the increase and diffusion of knowledge - shaping the future by preserving our heritage, discovering new knowledge, and sharing our resources with the world. Founded in 1846, the Smithsonian is the world's largest museum and research complex, consisting of 19 museums and galleries, the National Zoological Park, and nine research facilities. Become an active part of our mission through the Transcription Center. Together, we are discovering secrets hidden deep inside our collections that illuminate our history and our world.

Join us!

The Transcription Center: <https://transcription.si.edu>

On Facebook: <https://www.facebook.com/SmithsonianTranscriptionCenter>

On Twitter: [@TranscribeSI](https://twitter.com/TranscribeSI)

Connect with the Smithsonian

Smithsonian Institution: www.si.edu

On Facebook: <https://www.facebook.com/Smithsonian>

On Twitter: [@smithsonian](https://twitter.com/smithsonian)