



Smithsonian Institution

Archives of American Art

Celebrating 175: Wallace Berman, involved with the Temple of Man, Magic Theatre (New Magic Theatre), circa 1967

Extracted on Apr-17-2024 11:52:01

The Smithsonian Institution thanks all digital volunteers that transcribed and reviewed this material. Your work enriches Smithsonian collections, making them available to anyone with an interest in using them.

The Smithsonian Institution (the "Smithsonian") provides the content on this website (transcription.si.edu), other Smithsonian websites, and third-party sites on which it maintains a presence ("SI Websites") in support of its mission for the "increase and diffusion of knowledge." The Smithsonian invites visitors to use its online content for personal, educational and other non-commercial purposes. By using this website, you accept and agree to abide by the [following terms](#).

- If sharing the material in personal and educational contexts, please cite the Archives of American Art as source of the content and the project title as provided at the top of the document. Include the accession number or collection name; when possible, link to the Archives of American Art website.
- If you wish to use this material in a for-profit publication, exhibition, or online project, please contact Archives of American Art or transcribe@si.edu

For more information on this project and related material, contact the Archives of American Art. [See this project](#) and other collections in the Smithsonian Transcription Center.

5/28/67

to benefit what?

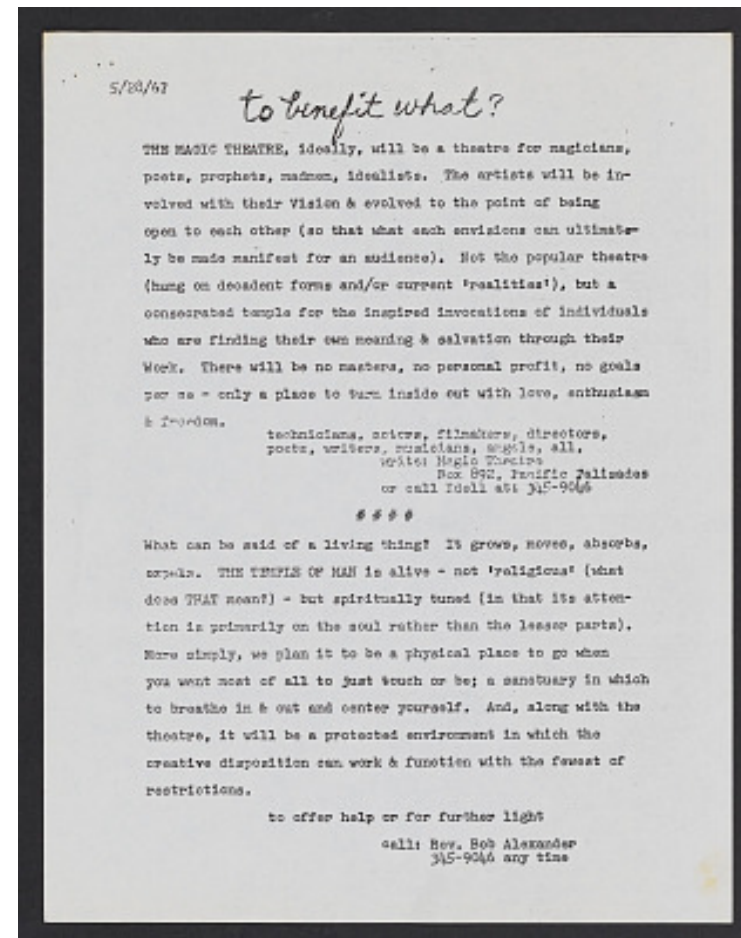
THE MAGIC THEATRE, ideally, will be a theatre for magicians, poets, madmen, idealists. The artists will be involved with their Vision & evolved to the point of being open to each other (so that what each envisions can ultimately be made manifest for an audience). Not the popular theatre (hung on decadent forms and/or current 'realities') but a consecrated temple for the inspired invocations of individuals who are finding their own meaning & salvation through their Work. There will be no masters, no personal profit, no goals per se - only a place to turn inside out with love, enthusiasm & freedom.

technicians, actors, filmmakers, directors,
poets, writers, musicians, angels, all
write: Magic Theatre
Box 892, Pacific Palisades
or call Idell at: 345-9046

What can be said of a living thing? It grows, moves, absorbs, expels. THE TEMPLE OF MAN is alive - not 'religious' (what does THAT mean?) - but spiritually tuned (in that its attention is primarily on the soul rather than the lesser parts). More simply, we plan it to be a physical place to go when you want most of all to just touch or be; a sanctuary in which to breathe in & out and center yourself. And, along with the theatre, it will be a protected environment in which the creative disposition can work & function with the fewest of restrictions.

to offer help or for further light

call: Rev. Bob Alexander
345-9046 any time



Celebrating 175: Wallace Berman, involved with the Temple of Man, Magic Theatre (New Magic Theatre), circa 1967
Transcribed and Reviewed by Digital Volunteers
Extracted Apr-17-2024 11:52:01



Smithsonian Institution

Archives of American Art

The mission of the Smithsonian is the increase and diffusion of knowledge - shaping the future by preserving our heritage, discovering new knowledge, and sharing our resources with the world. Founded in 1846, the Smithsonian is the world's largest museum and research complex, consisting of 19 museums and galleries, the National Zoological Park, and nine research facilities. Become an active part of our mission through the Transcription Center. Together, we are discovering secrets hidden deep inside our collections that illuminate our history and our world.

Join us!

The Transcription Center: <https://transcription.si.edu>

On Facebook: <https://www.facebook.com/SmithsonianTranscriptionCenter>

On Twitter: [@TranscribeSI](https://twitter.com/TranscribeSI)

Connect with the Smithsonian

Smithsonian Institution: www.si.edu

On Facebook: <https://www.facebook.com/Smithsonian>

On Twitter: [@smithsonian](https://twitter.com/smithsonian)