



**Smithsonian Institution**

*Archives of American Art*

## **Celebrating 175: George Nakashima, Correspondence, General, 1983**

Extracted on Jan-29-2023 04:39:22

**The Smithsonian Institution thanks all digital volunteers that transcribed and reviewed this material. Your work enriches Smithsonian collections, making them available to anyone with an interest in using them.**

The Smithsonian Institution (the "Smithsonian") provides the content on this website ([transcription.si.edu](https://transcription.si.edu)), other Smithsonian websites, and third-party sites on which it maintains a presence ("SI Websites") in support of its mission for the "increase and diffusion of knowledge." The Smithsonian invites visitors to use its online content for personal, educational and other non-commercial purposes. By using this website, you accept and agree to abide by the [following terms](#).

- If sharing the material in personal and educational contexts, please cite the Archives of American Art as source of the content and the project title as provided at the top of the document. Include the accession number or collection name; when possible, link to the Archives of American Art website.
- If you wish to use this material in a for-profit publication, exhibition, or online project, please contact Archives of American Art or [transcribe@si.edu](mailto:transcribe@si.edu)

For more information on this project and related material, contact the Archives of American Art. [See this project](#) and other collections in the Smithsonian Transcription Center.

#### (4) Joints 1 week

Instructors will demonstrate various joints, including dovetails, to be practiced by the interns.

#### (5) and (6) Double Project 5½ weeks

Two projects in succession, both made with hand tools, each incorporating different joints and techniques, will be assigned in consultation with the intern. Choice of objects to be made will be based upon skills exhibited by the intern during the first weeks of the program.

During this period instructors will demonstrate and interns will practice mortise and tenon joints of various kinds, and later a long edge joint made with a hand plane.

Also during these weeks interns will be introduced to the machine shop.

#### (7) Small Carcase 3½ weeks

Interns will produce an object designed to include a frame and panel; solid wood carcase construction; wedged mortise and tenon joints; and a single inset, side hung drawer. The making of a drawer will be demonstrated. Tablesaws, jointers, thicknesser, drillpresses and small bandsaw can be used for this project.

#### (8) Large Carcase 16 weeks

This large, complex piece including doors and drawers will be assigned in consultation with the individual intern. In some cases it will be appropriate for interns to design this object themselves.

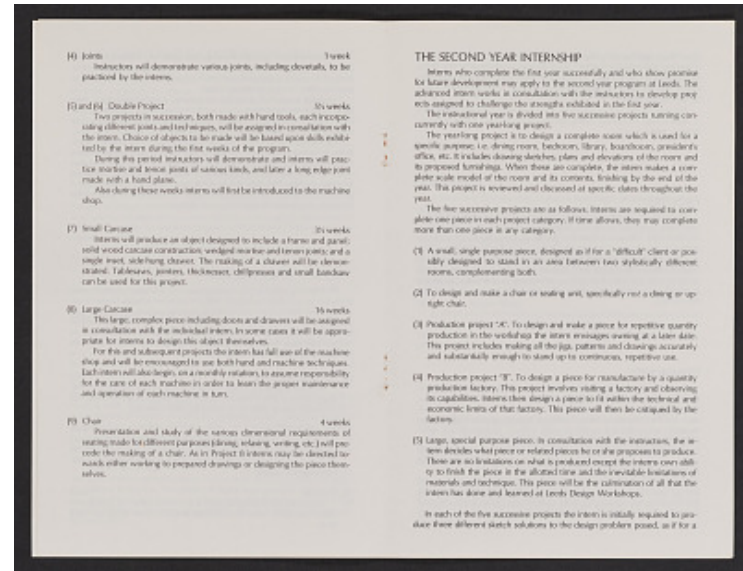
For this and subsequent projects the intern has full use of the machine shop and will be encouraged to use both hand and machine techniques. Each intern will also begin, on a monthly rotation, to assume responsibility for the care of each machine in order to learn the proper maintenance and operation of each machine in turn.

#### (9) Chair 4 weeks

Presentation and study of the various dimensional requirements of seating made for different purposes (dining, relaxing, writing, etc.) will precede the making of a chair. As in Project 8 interns may be directed towards either working to prepared drawings or designing the piece themselves.

### THE SECOND YEAR INTERNSHIP

Interns who complete the first year successfully and who show promise for future development may apply to the second year program at Leeds. The advanced intern works in consultation with the instructors to develop projects assigned to challenge the strengths exhibited in the first year.



The instructional year is divided into five successive projects running concurrently with one year-long project.

The year-long project is to design a complete room which is used for a specific purpose, i.e. dining room, bedroom, library, boardroom, president's office, etc. It includes drawing sketches, plans and elevations of the room and its proposed furnishings. When these are complete, the intern makes a complete scale model of the room and its contents, finishing by the end of the year. This project is reviewed and discussed at specific dates throughout the year.

The five successive projects are as follows. Interns are required to complete one piece in each project category. If time allows, they may complete more than one piece in any category.

(1) A small, single purpose piece, designed as if for a "difficult" client or possibly designed to stand in an area between two stylistically different rooms, complementing both.

(2) To design and make a chair or seating unit, specifically not a dining or upright chair.

(3) Production project "A". To design and make a piece for repetitive quantity production in the workshop the intern envisages owning at a later date. This project includes making all the jigs, patterns and drawings accurately and substantially enough to stand up to continuous, repetitive use.

(4) Production project "B". To design a piece for manufacture by a quantity production factory. This project involves visiting a factory and observing its capabilities. Interns then design a piece to fit within the technical and economic limits of that factory. This piece will then be critiqued by the factory.

(5) Large, special purpose piece. In consultation with the instructors, the intern decides what piece or related pieces he or she proposes to produce. There are no limitations on what is produced except the interns own ability to finish the piece in the allotted time and the inevitable limitations of materials and technique. This piece will be the culmination of all that the intern has done and learned at Leeds Design Workshops.

In each of the five successive projects the intern is initially required to produce three different sketch solutions to the design problem posed, as if for a

Celebrating 175: George Nakashima, Correspondence, General, 1983  
Transcribed and Reviewed by Digital Volunteers  
Extracted Jan-29-2023 04:39:22



## Smithsonian Institution

*Archives of American Art*

The mission of the Smithsonian is the increase and diffusion of knowledge - shaping the future by preserving our heritage, discovering new knowledge, and sharing our resources with the world. Founded in 1846, the Smithsonian is the world's largest museum and research complex, consisting of 19 museums and galleries, the National Zoological Park, and nine research facilities. Become an active part of our mission through the Transcription Center. Together, we are discovering secrets hidden deep inside our collections that illuminate our history and our world.

Join us!

The Transcription Center: <https://transcription.si.edu>

On Facebook: <https://www.facebook.com/SmithsonianTranscriptionCenter>

On Twitter: [@TranscribeSI](https://twitter.com/TranscribeSI)

Connect with the Smithsonian

Smithsonian Institution: [www.si.edu](http://www.si.edu)

On Facebook: <https://www.facebook.com/Smithsonian>

On Twitter: [@smithsonian](https://twitter.com/smithsonian)