



Smithsonian Institution

National Anthropological Archives

"Distribution of the Shoshonians in the San Joaquin-Tulare Valley of California" 1905

Extracted on Apr-18-2024 07:31:45

The Smithsonian Institution thanks all digital volunteers that transcribed and reviewed this material. Your work enriches Smithsonian collections, making them available to anyone with an interest in using them.

The Smithsonian Institution (the "Smithsonian") provides the content on this website (transcription.si.edu), other Smithsonian websites, and third-party sites on which it maintains a presence ("SI Websites") in support of its mission for the "increase and diffusion of knowledge." The Smithsonian invites visitors to use its online content for personal, educational and other non-commercial purposes. By using this website, you accept and agree to abide by the [following terms](#).

- If sharing the material in personal and educational contexts, please cite the National Anthropological Archives as source of the content and the project title as provided at the top of the document. Include the accession number or collection name; when possible, link to the National Anthropological Archives website.
- If you wish to use this material in a for-profit publication, exhibition, or online project, please contact National Anthropological Archives or transcribe@si.edu

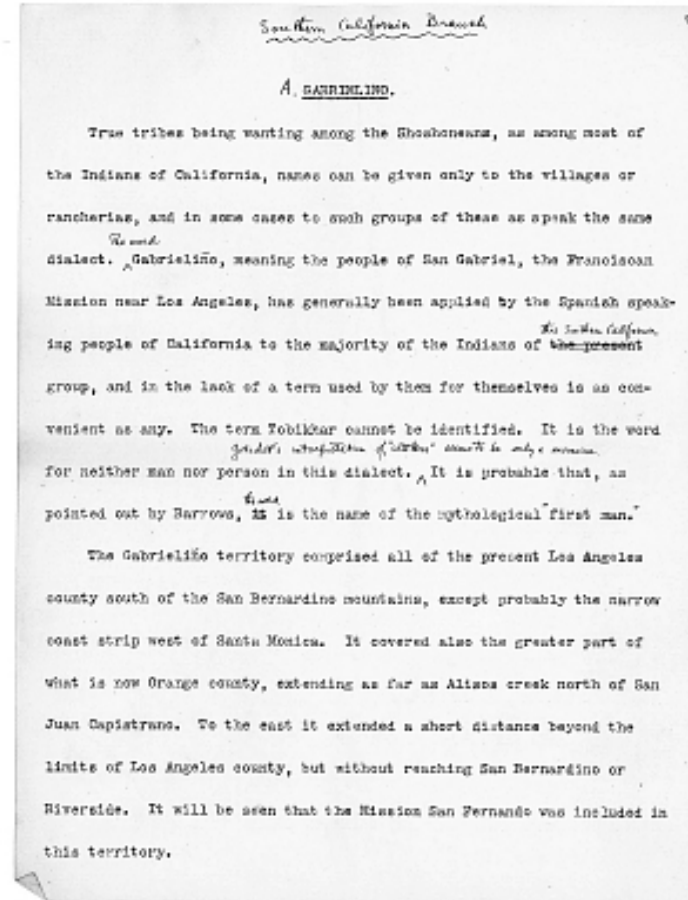
For more information on this project and related material, contact the National Anthropological Archives. [See this project](#) and other collections in the Smithsonian Transcription Center.

Southern California Branch [underlined]

A. GABRIELINO. [underlined]

True tribes being wanting among the Shoshoneans, as among most of the Indians of California, names can be given only to the villages or rancherias, and in some cases to such groups of these as speak the same dialect. The word Gabrielino, meaning the people of San Gabriel, the Franciscan Mission near Los Angeles, has generally been applied by the Spanish speaking people of California to the majority of the Indians of this Southern California group, and in the lack of a term used by them for themselves is as convenient as any. The term Tobikhar cannot be identified. It is the word for neither man nor person in this dialect. Gatschet's interpretation of "settlers" seems to be only a surmise. It is probable that, as pointed out by Barrows, the word is the name of the mythological "first man."

The Gabrielino territory comprised all of the present Los Angeles county south of the San Bernardino mountains, except probably the narrow coast strip west of Santa Monica. It covered also the greater part of what is now Orange county, extending as far as Alisos creek north of San Juan Capistrano. To the east it extended a short distance beyond the limits of Los Angeles county, but without reaching San Bernardino or Riverside. It will be seen that the Mission San Fernando was included in this territory.



"Distribution of the Shoshonians in the San Joaquin-Tulare Valley of California" 1905
Transcribed and Reviewed by Digital Volunteers
Extracted Apr-18-2024 07:31:45



Smithsonian Institution

National Anthropological Archives

The mission of the Smithsonian is the increase and diffusion of knowledge - shaping the future by preserving our heritage, discovering new knowledge, and sharing our resources with the world. Founded in 1846, the Smithsonian is the world's largest museum and research complex, consisting of 19 museums and galleries, the National Zoological Park, and nine research facilities. Become an active part of our mission through the Transcription Center. Together, we are discovering secrets hidden deep inside our collections that illuminate our history and our world.

Join us!

The Transcription Center: <https://transcription.si.edu>

On Facebook: <https://www.facebook.com/SmithsonianTranscriptionCenter>

On Twitter: [@TranscribeSI](https://twitter.com/TranscribeSI)

Connect with the Smithsonian

Smithsonian Institution: www.si.edu

On Facebook: <https://www.facebook.com/Smithsonian>

On Twitter: [@smithsonian](https://twitter.com/smithsonian)