



**Smithsonian Institution**

*Smithsonian Institution Archives*

## **Journal of Richard E. Blackwelder, West Indies, vol. 4**

Extracted on Mar-29-2024 02:00:31

**The Smithsonian Institution thanks all digital volunteers that transcribed and reviewed this material. Your work enriches Smithsonian collections, making them available to anyone with an interest in using them.**

The Smithsonian Institution (the "Smithsonian") provides the content on this website ([transcription.si.edu](https://transcription.si.edu)), other Smithsonian websites, and third-party sites on which it maintains a presence ("SI Websites") in support of its mission for the "increase and diffusion of knowledge." The Smithsonian invites visitors to use its online content for personal, educational and other non-commercial purposes. By using this website, you accept and agree to abide by the [following terms](#).

- If sharing the material in personal and educational contexts, please cite the Smithsonian Institution Archives as source of the content and the project title as provided at the top of the document. Include the accession number or collection name; when possible, link to the Smithsonian Institution Archives website.
- If you wish to use this material in a for-profit publication, exhibition, or online project, please contact Smithsonian Institution Archives or [transcribe@si.edu](mailto:transcribe@si.edu)

For more information on this project and related material, contact the Smithsonian Institution Archives. [See this project](#) and other collections in the Smithsonian Transcription Center.

[[preprinted]] 6 [[/preprinted]] St. Lucia 6.

a huge lunch. They may be able to report on the road - it is 60 miles, clear around the island. By nine I was dressed and ready to go out too. I rode along the main road through the Cul de Sac Valley, over the ridge, and almost to Dennery. I stopped to collect in a pasture at [[underlined]] Station 206. [[/underlined]]

About 1 mile north of Dennery on the east coast. In dung in a small pasture found 3 ~~Staphs~~ 4 ~~Staphs~~ (Paederinae - 1, Xantholininae (large) - 1, Aleocharinae - 1), and 8 ~~Staphs~~ Aphodius. The dung was scarce and rather dry.

This road is fairly good, and goes through some fine country. Real tropical forest, with many tree fern~~s~~~~s~~~~s~~, palmo, bromeliads, etc., etc., but there is more or less cultivation mixed in.

I spent the afternoon writing letters. These were to True, American Consul at Martinique, Dr. Meyer~~s~~~~s~~ of Dormstadt - Germany, Dr. Fenyee, Violet Cavell.

III-29-36 Mr. Box invited me to go out into the forest with him today. We left at 8:30, but stopped at his lab in the Cul de Sac Valley to get some equipment. Then we crossed the ridge into the Roseau Valley - principal sugarcane center, by way of the road to Anse La Raye. We turned east on an unmarked road that follows the right bank of the Roseau River for about six miles.

[[end page]]

[[start page]]

7

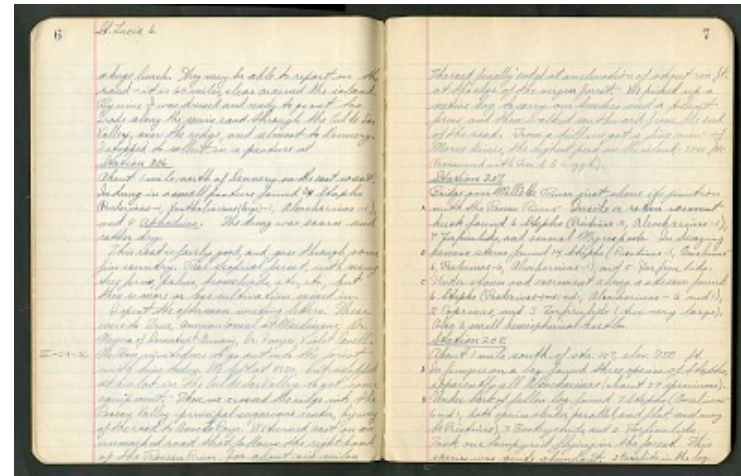
The road finally ended at an elevation of about 350 ft. at the edge of the virgin forest. We picked up a native boy to carry our lunches and a plant press, and then walked southward from the end of the road. From a hill we got a fine view of Morne Gimie, the highest peak on the island, - 3145 ft. (Pronounced with French G - zzh.).

Station 207.

Bridge over Millette River just above its junction A with the Roseau River. Inside a rotten coconut husk found 6 Staphs (Piestinae - 5, Aleocharinae - 1), 7 Forficulids, and several Myriapods. In decaying B banana stems found 14 Staphs (Piestinae - 1, Omaliinae - 6, Paederinae - 6, Aleocharinae - 1), and 5 Forficulids. C Under stones and excrement along a stream found 6 Staphs (Paederinae - 1 and 1 and 1, Aleocharinae - 2 and 1), 2 Coprinae, and 3 Forficulids (two very large). Also 2 small hemispherical beetles.

Station 208.

About 1 mile south of sta. 207, elev. 750 ft. A In fungus on a log found three species of Staphs, apparently all Aleocharinae (about 37 specimens). B Under bark of fallen log found 7 Staphs (Omaliinae - 6 and 1, both species slender, parallel, and flat, and may be Piestinae), 3 Bostrychids, and 2 Forficulids. Took one Lampyrid flying in the forest. This species was quite abundant. 2 Passalids in the log.



Journal of Richard E. Blackwelder, West Indies, vol. 4  
Transcribed and Reviewed by Digital Volunteers  
Extracted Mar-29-2024 02:00:31



## Smithsonian Institution

*Smithsonian Institution Archives*

The mission of the Smithsonian is the increase and diffusion of knowledge - shaping the future by preserving our heritage, discovering new knowledge, and sharing our resources with the world. Founded in 1846, the Smithsonian is the world's largest museum and research complex, consisting of 19 museums and galleries, the National Zoological Park, and nine research facilities. Become an active part of our mission through the Transcription Center. Together, we are discovering secrets hidden deep inside our collections that illuminate our history and our world.

Join us!

The Transcription Center: <https://transcription.si.edu>

On Facebook: <https://www.facebook.com/SmithsonianTranscriptionCenter>

On Twitter: [@TranscribeSI](https://twitter.com/TranscribeSI)

Connect with the Smithsonian

Smithsonian Institution: [www.si.edu](http://www.si.edu)

On Facebook: <https://www.facebook.com/Smithsonian>

On Twitter: [@smithsonian](https://twitter.com/smithsonian)