



Smithsonian Institution

Smithsonian Institution Archives

Journal of Facts in Natural History. Volume 1, 1860-1868

Extracted on May-23-2025 02:38:01

The Smithsonian Institution thanks all digital volunteers that transcribed and reviewed this material. Your work enriches Smithsonian collections, making them available to anyone with an interest in using them.

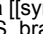

The Smithsonian Institution (the "Smithsonian") provides the content on this website (transcription.si.edu), other Smithsonian websites, and third-party sites on which it maintains a presence ("SI Websites") in support of its mission for the "increase and diffusion of knowledge." The Smithsonian invites visitors to use its online content for personal, educational and other non-commercial purposes. By using this website, you accept and agree to abide by the [following terms](#).

- If sharing the material in personal and educational contexts, please cite the Smithsonian Institution Archives as source of the content and the project title as provided at the top of the document. Include the accession number or collection name; when possible, link to the Smithsonian Institution Archives website.
- If you wish to use this material in a for-profit publication, exhibition, or online project, please contact Smithsonian Institution Archives or transcribe@si.edu

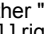
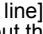

For more information on this project and related material, contact the Smithsonian Institution Archives. [See this project](#) and other collections in the Smithsonian Transcription Center.

[[start page]]

[[line]]

113) Aug 1. Saw what appeared a  S.  Cecid. fulviventris in S. brassicoides jar. Lost it.

[[line]]

Found another " S.  rigida" gall on S. cordata, but the beak of the gall recurved  like the tongue case of Sphinx 5 maculata. Larva .06 inch long, bright opaque orange, with a ventral & dorsal polished semi-translucent broad orange vitta.

[[line]]

[[NOTE: section defined with 2 parallel vertical squiggle lines]] "On the insects, Coleopterous & Lepidopterous & Dipterous, inhabiting the galls of certain species of willow; by B.D. Walsh n. A."

[[second half of page blank except for very bottom. Then:]]

[[line]]

Marmara (n.g. salicella or sp. Clemens mines twigs of yellow willow. Clemens. P.E.S.P II p.7

[[End page]]

[[Start page]]

114) Microlep. larva "without feet" Clemens P.E.S.P. # p.13.

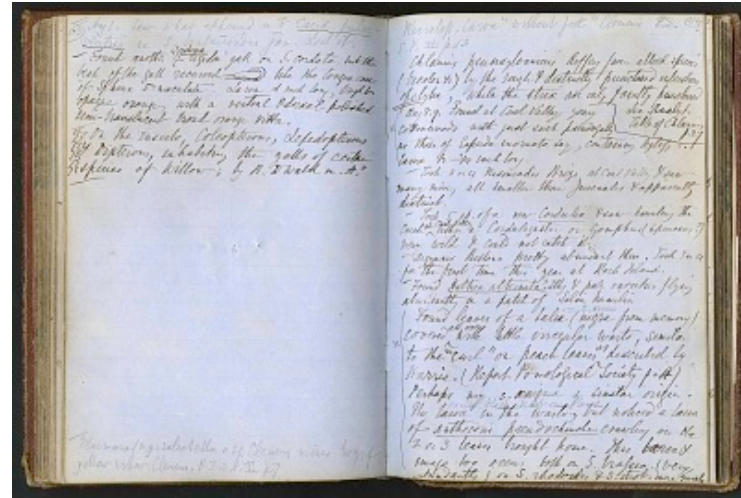
Chlaenius pennsylvanicus differs from allied species (bicolor, etc.) by the rough & distinctly punctured interstices of elytra, while the striae are only faintly punctured. Sec. Analyt. Table of Chlaenius p.27.

[[line]]

X Aug 8.9 Found at Coal Valley young cottonwoods with just such pseudogalls as those of Saperda inornata Say, containing legless larvae 1/2 - 3/4 inch long.

[[line]]

Took 3 or 4 Nisoniades Brizo at Coal Valley & saw many more, all smaller than Juvenalis & apparently distinct.



[[line]]

Took 5 sp. of a new Cordulia & saw haunting the creek ^{at Coal Valley} either a Cordulegaster or a Gomphus (spinosus?) very wild & could not catch it.

[[line]]

Argynnis Bellona pretty abundant there. Took 3 or 4 for the first time this year at Rock Island.

[[line]]

Found Haltica alternata? & pale varieties flying abundantly in a patch of Salix humilis.

X Found leaves of a Salix ^[^ = S. semen] (nigra from memory) covered ^[^ all over] with little irregular warts, similar to the "curl" on peach leaves ^[^ as] described by Harris. (Report Pomological Society p.4) Perhaps my S. aenigma a similar origin. No larvae in the warts, ^[^ as also black knot on plums] but noticed a larva of Anthocoris pseudochinche crawling on the 2 or 3 leaves brought home. This larva & imago too occur both on S. brassic. (very abundantly) on S. rhodoides & S. strob. more rarely.

[[End page]]



Smithsonian Institution

Smithsonian Institution Archives

The mission of the Smithsonian is the increase and diffusion of knowledge - shaping the future by preserving our heritage, discovering new knowledge, and sharing our resources with the world. Founded in 1846, the Smithsonian is the world's largest museum and research complex, consisting of 19 museums and galleries, the National Zoological Park, and nine research facilities. Become an active part of our mission through the Transcription Center. Together, we are discovering secrets hidden deep inside our collections that illuminate our history and our world.

Join us!

The Transcription Center: <https://transcription.si.edu>

On Facebook: <https://www.facebook.com/SmithsonianTranscriptionCenter>

On Twitter: [@TranscribeSI](https://twitter.com/TranscribeSI)

Connect with the Smithsonian

Smithsonian Institution: www.si.edu

On Facebook: <https://www.facebook.com/Smithsonian>

On Twitter: [@smithsonian](https://twitter.com/smithsonian)