



Smithsonian Institution

Smithsonian Institution Archives

Field notes, Death Valley Expedition, 1891

Extracted on Apr-19-2024 05:18:20

The Smithsonian Institution thanks all digital volunteers that transcribed and reviewed this material. Your work enriches Smithsonian collections, making them available to anyone with an interest in using them.

The Smithsonian Institution (the "Smithsonian") provides the content on this website (transcription.si.edu), other Smithsonian websites, and third-party sites on which it maintains a presence ("SI Websites") in support of its mission for the "increase and diffusion of knowledge." The Smithsonian invites visitors to use its online content for personal, educational and other non-commercial purposes. By using this website, you accept and agree to abide by the [following terms](#).

- If sharing the material in personal and educational contexts, please cite the Smithsonian Institution Archives as source of the content and the project title as provided at the top of the document. Include the accession number or collection name; when possible, link to the Smithsonian Institution Archives website.
- If you wish to use this material in a for-profit publication, exhibition, or online project, please contact Smithsonian Institution Archives or transcribe@si.edu

For more information on this project and related material, contact the Smithsonian Institution Archives. [See this project](#) and other collections in the Smithsonian Transcription Center.

12

[[end page]]

[[start page]]

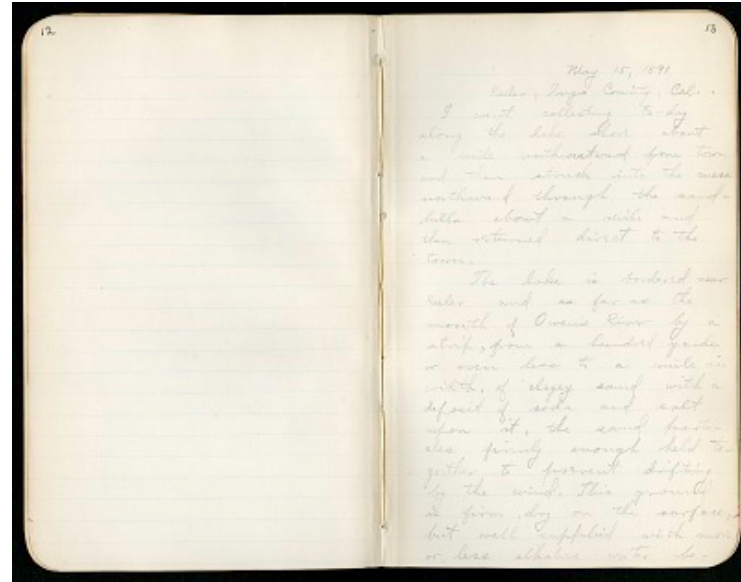
13

May 15, 1891

Keeler, Inyo County, Cal.

I went collecting to-day along the lake shore about a mile northwestward from town and then struck into the mesa northward through the sandhills about a mile and then returned direct to the town.

The lake is bordered near Keeler and as far as the mouth of Owen's River by a strip, from a hundred yards or even less to a mile in width, of clayey sand with a deposit of soda and salt upon it, the sand particles firmly enough held together to prevent drifting by the wind. This ground is firm, dry on the surface but well supplied with more or less alkaline water be-



Field notes, Death Valley Expedition, 1891
Transcribed and Reviewed by Digital Volunteers
Extracted Apr-19-2024 05:18:20



Smithsonian Institution

Smithsonian Institution Archives

The mission of the Smithsonian is the increase and diffusion of knowledge - shaping the future by preserving our heritage, discovering new knowledge, and sharing our resources with the world. Founded in 1846, the Smithsonian is the world's largest museum and research complex, consisting of 19 museums and galleries, the National Zoological Park, and nine research facilities. Become an active part of our mission through the Transcription Center. Together, we are discovering secrets hidden deep inside our collections that illuminate our history and our world.

Join us!

The Transcription Center: <https://transcription.si.edu>

On Facebook: <https://www.facebook.com/SmithsonianTranscriptionCenter>

On Twitter: [@TranscribeSI](https://twitter.com/TranscribeSI)

Connect with the Smithsonian

Smithsonian Institution: www.si.edu

On Facebook: <https://www.facebook.com/Smithsonian>

On Twitter: [@smithsonian](https://twitter.com/smithsonian)