



Smithsonian Institution

Archives Center - NMAH

Earl Shaffer's Appalachian Trail Hike Diary, 1948

Extracted on Mar-28-2024 08:21:00

The Smithsonian Institution thanks all digital volunteers that transcribed and reviewed this material. Your work enriches Smithsonian collections, making them available to anyone with an interest in using them.

The Smithsonian Institution (the "Smithsonian") provides the content on this website (transcription.si.edu), other Smithsonian websites, and third-party sites on which it maintains a presence ("SI Websites") in support of its mission for the "increase and diffusion of knowledge." The Smithsonian invites visitors to use its online content for personal, educational and other non-commercial purposes. By using this website, you accept and agree to abide by the [following terms](#).

- If sharing the material in personal and educational contexts, please cite the Archives Center - NMAH as source of the content and the project title as provided at the top of the document. Include the accession number or collection name; when possible, link to the Archives Center - NMAH website.
- If you wish to use this material in a for-profit publication, exhibition, or online project, please contact Archives Center - NMAH or transcribe@si.edu

For more information on this project and related material, contact the Archives Center - NMAH. [See this project](#) and other collections in the Smithsonian Transcription Center.

Trail switch backs down other side. Insect pests of all kinds on mtn. first place so far. Storm broke as I descended mtn.

Came to road at Walasiyi Inn. Sign there says this Gap (Neel) according to Cherokee Indian Myth is home of "the Great Frog" head of ancient animal Council. Blood Mtn. is home of Nunnehi spirit folk of Cherokee. Blood and Slaughter Mtns are traditional battleground where Cherokee defeated the creeks.

Must be spirits not friendly to such as [[Love ?]] Brave because storm came.

[[end page]]

[[start page]]

At Walasiyi Inn which was deserted I went under patio. Wrapped in blanket and dozed till 3:00.

Woke and wrote cards + went down road. Truck stopped, driver promised to mail cards. Started on trail

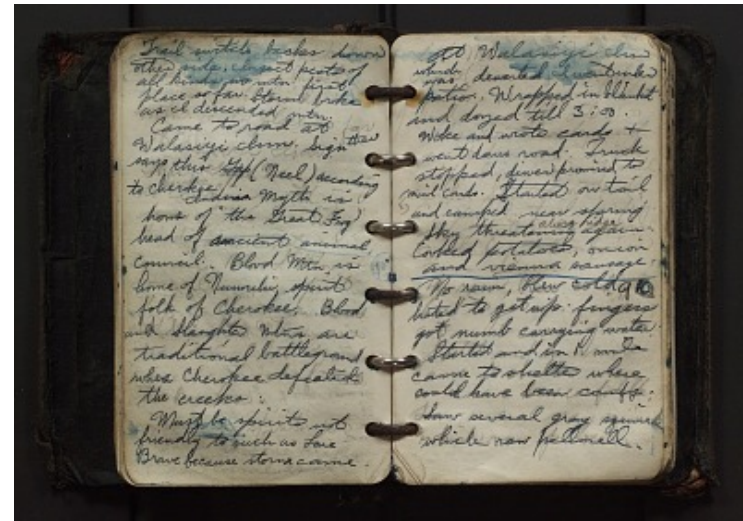
[[pencil margin note]] 5 [[/note]] and camped near spring Sky threatening

[[insertion in black pencil]] along ridge [[/insertion]] again. Cooked potatoes, onion and vienna sausage -

[[blue pencil line]]

No rain, blew cold ~~[[strikethrough]]~~ [[blue pencil date]] 10

~~[[/strikethrough]]~~ [[black pencil correction]] 9 [[/correction]] hated to get up. fingers got numb carrying water. Started and in 1 mile came to shelter where could have been comfy. Saw several gray squirrel which ran pellmell.



Earl Shaffer's Appalachian Trail Hike Diary, 1948
Transcribed and Reviewed by Digital Volunteers
Approved by Smithsonian Staff
Extracted Mar-28-2024 08:21:00



Smithsonian Institution

Archives Center - NMAH

The mission of the Smithsonian is the increase and diffusion of knowledge - shaping the future by preserving our heritage, discovering new knowledge, and sharing our resources with the world. Founded in 1846, the Smithsonian is the world's largest museum and research complex, consisting of 19 museums and galleries, the National Zoological Park, and nine research facilities. Become an active part of our mission through the Transcription Center. Together, we are discovering secrets hidden deep inside our collections that illuminate our history and our world.

Join us!

The Transcription Center: <https://transcription.si.edu>

On Facebook: <https://www.facebook.com/SmithsonianTranscriptionCenter>

On Twitter: [@TranscribeSI](https://twitter.com/TranscribeSI)

Connect with the Smithsonian

Smithsonian Institution: www.si.edu

On Facebook: <https://www.facebook.com/Smithsonian>

On Twitter: [@smithsonian](https://twitter.com/smithsonian)