



Smithsonian Institution

Archives Center - NMAH

Earl Shaffer's Appalachian Trail Hike Diary, 1948

Extracted on Apr-19-2024 02:15:19

The Smithsonian Institution thanks all digital volunteers that transcribed and reviewed this material. Your work enriches Smithsonian collections, making them available to anyone with an interest in using them.

The Smithsonian Institution (the "Smithsonian") provides the content on this website (transcription.si.edu), other Smithsonian websites, and third-party sites on which it maintains a presence ("SI Websites") in support of its mission for the "increase and diffusion of knowledge." The Smithsonian invites visitors to use its online content for personal, educational and other non-commercial purposes. By using this website, you accept and agree to abide by the [following terms](#).

- If sharing the material in personal and educational contexts, please cite the Archives Center - NMAH as source of the content and the project title as provided at the top of the document. Include the accession number or collection name; when possible, link to the Archives Center - NMAH website.
- If you wish to use this material in a for-profit publication, exhibition, or online project, please contact Archives Center - NMAH or transcribe@si.edu

For more information on this project and related material, contact the Archives Center - NMAH. [See this project](#) and other collections in the Smithsonian Transcription Center.

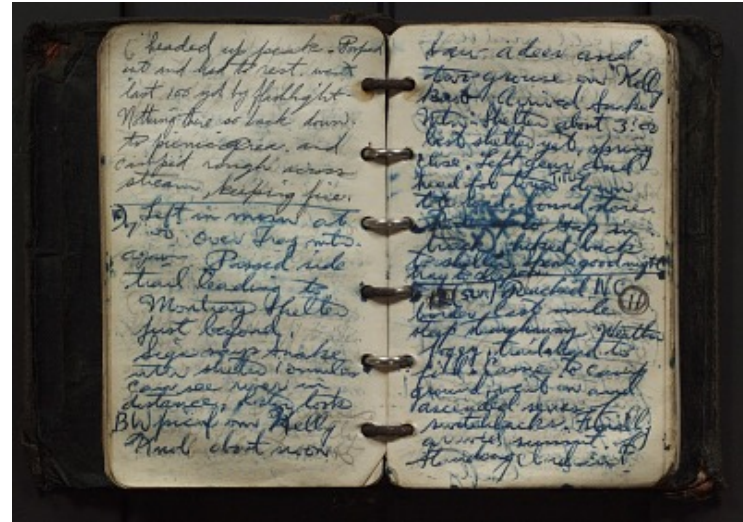
[[pencil]] 6 [[/pencil]] headed up peak. Pooped out and had to rest. went last 100 yd by flashlight. Nothing there so back down. to picnic area. and camped rough across stream, keeping fire.

10) Left in morn at 7:00 over Tray mtn. again Passed side trail leading to Montray Shelter just beyond.
Sign says Snake mtn shelter 10 miles can see river in distance, later took BW pic from Kelly Knob about noon
[[end page]]

[[start page]]

Saw a deer and two grouse on Kelly Knob. Arrived Snake Mtn Shelter about 3:00 best shelter yet, spring close. Left gear and head for town
[[insertion]] Titus [[/insertion]] down tote road. found store. Rode up to Gap in truck, hiked back to shelter. Spent good night. hay to sleep on.

~~12~~ (Sun) Reached NC [[circled date in pencil]] 11 [[/date]] border last mile steep straightaway Weather foggy. trail hard to find. Came to Camp ground, went on and ascended series of switchbacks. Finally arrived summit. of Standing Indian.



Earl Shaffer's Appalachian Trail Hike Diary, 1948
Transcribed and Reviewed by Digital Volunteers
Approved by Smithsonian Staff
Extracted Apr-19-2024 02:15:19



Smithsonian Institution

Archives Center - NMAH

The mission of the Smithsonian is the increase and diffusion of knowledge - shaping the future by preserving our heritage, discovering new knowledge, and sharing our resources with the world. Founded in 1846, the Smithsonian is the world's largest museum and research complex, consisting of 19 museums and galleries, the National Zoological Park, and nine research facilities. Become an active part of our mission through the Transcription Center. Together, we are discovering secrets hidden deep inside our collections that illuminate our history and our world.

Join us!

The Transcription Center: <https://transcription.si.edu>

On Facebook: <https://www.facebook.com/SmithsonianTranscriptionCenter>

On Twitter: [@TranscribeSI](https://twitter.com/TranscribeSI)

Connect with the Smithsonian

Smithsonian Institution: www.si.edu

On Facebook: <https://www.facebook.com/Smithsonian>

On Twitter: [@smithsonian](https://twitter.com/smithsonian)