



Smithsonian Institution

Archives Center - NMAH

Charles Francis Hall Diary Volume 1, 1860

Extracted on Apr-19-2024 01:52:36

The Smithsonian Institution thanks all digital volunteers that transcribed and reviewed this material. Your work enriches Smithsonian collections, making them available to anyone with an interest in using them.

The Smithsonian Institution (the "Smithsonian") provides the content on this website (transcription.si.edu), other Smithsonian websites, and third-party sites on which it maintains a presence ("SI Websites") in support of its mission for the "increase and diffusion of knowledge." The Smithsonian invites visitors to use its online content for personal, educational and other non-commercial purposes. By using this website, you accept and agree to abide by the [following terms](#).

- If sharing the material in personal and educational contexts, please cite the Archives Center - NMAH as source of the content and the project title as provided at the top of the document. Include the accession number or collection name; when possible, link to the Archives Center - NMAH website.
- If you wish to use this material in a for-profit publication, exhibition, or online project, please contact Archives Center - NMAH or transcribe@si.edu

For more information on this project and related material, contact the Archives Center - NMAH. [See this project](#) and other collections in the Smithsonian Transcription Center.

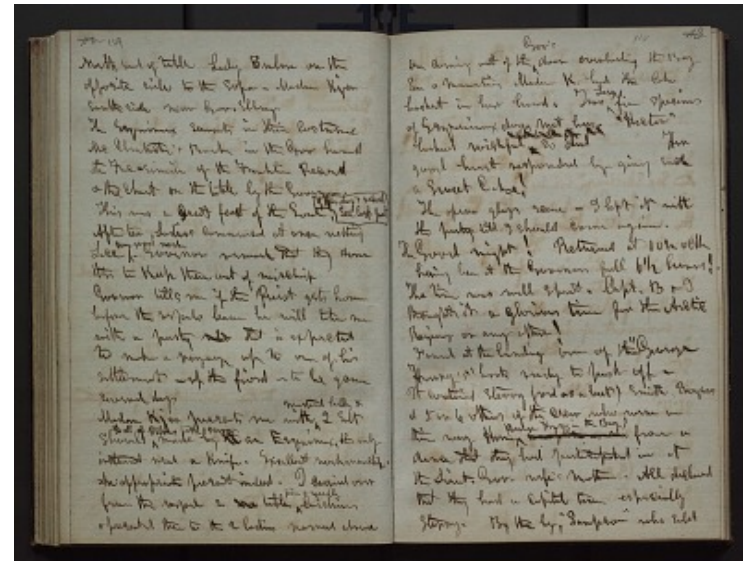
[[in pencil]]~~112~~ 109 [[in pencil]]

North end of table Lady Bulow on the opposite side to the Sofa -
Madame Kjer south side near Gov. Elberg.
The Esquimaux Seventh in this costume McClintock's Book in the Gov
hand The Fac-simile of the Franklin Record & the Chart on the table by
the Governor. This was a great feast of the Soul! of this day's record See last part
After tea, Ladies commenced at once nitting Lace very good work Governor remark that they done this to keep them out
of mischief.
Governor tells me if the Priest gets home before the vessels leave he
will take me with a party ~~who~~ that is
expected to make a voyage up to one of his settlements - up the fiord -
to be gone several days
Madam Kjer presents me with mustard ladle 2
Salt Shovels all of walrus tusk ivory made by
~~the~~ an Esquimaux, the only instrument
used a knife. Excellent workmanship. An appropriate present indeed. I
carried over from the vessel ~~2~~ sew ~~table~~
table pin & needle Cuishions & presented them
to the 2 ladies named above
[[end page]]

[[start page]]

[[in pencil]] 110 ~~113~~ [[in pencil]]

On coming out of the Gov's door overlooking the
Bay Sea & Mountains, Madam K. had the Cake basket in her hand.
Two Large fine specimens of Esquimaux dogs
met her. "Hector" looked wishful & shook
his fine tail so did [blank space for another name] Her good heart responded by giving each a Sweet
Cake!
The opera glass scene - I left it with the party till I should come again.
The Good night! Returned at 10 1/2 o'clk having been at the Governors
full 6 1/2 hours! The time was well spent. Capt. B & I thought it a
glorious time for the Arctic Regions or any other!
Found at the landing one of the "George Henry's" boats ready to push
off - It contained Sterry (red as a beet) Smith, Rogers & 5 or 6 others of
the crew who were on their way Home (George Henry in the Bay)
from a dance that they had participated in at the Lieut.
Gov. wife's mothers. All declared that they had a capital time especially
Sterry. By the by, "Sampson" who sold
[[end page]]



Charles Francis Hall Diary Volume 1, 1860
Transcribed and Reviewed by Digital Volunteers
Extracted Apr-19-2024 01:52:36



Smithsonian Institution

Archives Center - NMAH

The mission of the Smithsonian is the increase and diffusion of knowledge - shaping the future by preserving our heritage, discovering new knowledge, and sharing our resources with the world. Founded in 1846, the Smithsonian is the world's largest museum and research complex, consisting of 19 museums and galleries, the National Zoological Park, and nine research facilities. Become an active part of our mission through the Transcription Center. Together, we are discovering secrets hidden deep inside our collections that illuminate our history and our world.

Join us!

The Transcription Center: <https://transcription.si.edu>

On Facebook: <https://www.facebook.com/SmithsonianTranscriptionCenter>

On Twitter: [@TranscribeSI](https://twitter.com/TranscribeSI)

Connect with the Smithsonian

Smithsonian Institution: www.si.edu

On Facebook: <https://www.facebook.com/Smithsonian>

On Twitter: [@smithsonian](https://twitter.com/smithsonian)