



**Smithsonian Institution**

*Archives of American Art*

## **Carl Andre**

Extracted on Apr-19-2024 12:19:03

**The Smithsonian Institution thanks all digital volunteers that transcribed and reviewed this material. Your work enriches Smithsonian collections, making them available to anyone with an interest in using them.**

The Smithsonian Institution (the "Smithsonian") provides the content on this website ([transcription.si.edu](https://transcription.si.edu)), other Smithsonian websites, and third-party sites on which it maintains a presence ("SI Websites") in support of its mission for the "increase and diffusion of knowledge." The Smithsonian invites visitors to use its online content for personal, educational and other non-commercial purposes. By using this website, you accept and agree to abide by the [following terms](#).

- If sharing the material in personal and educational contexts, please cite the Archives of American Art as source of the content and the project title as provided at the top of the document. Include the accession number or collection name; when possible, link to the Archives of American Art website.
- If you wish to use this material in a for-profit publication, exhibition, or online project, please contact Archives of American Art or [transcribe@si.edu](mailto:transcribe@si.edu)

For more information on this project and related material, contact the Archives of American Art. [See this project](#) and other collections in the Smithsonian Transcription Center.

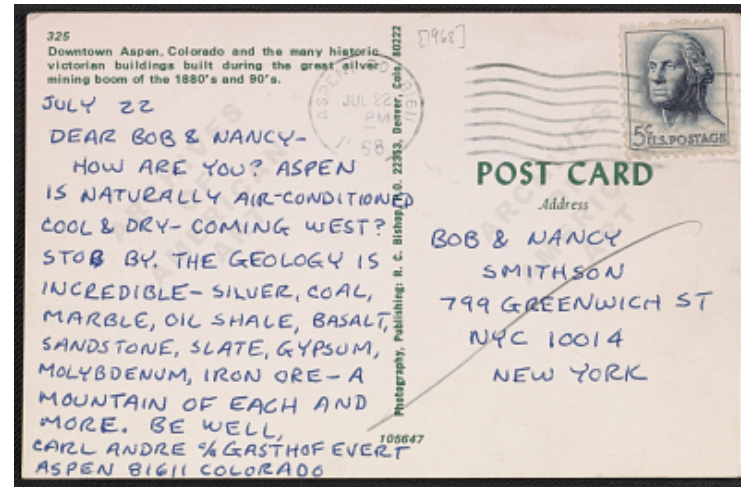
[[preprinted in upper left hand corner]] 325  
Downtown Aspen, Colorado and the many historic victorian buildings  
built during the great silver mining boom of the 1880's and 90's.  
[[/preprinted]]

[[in pencil on upper right hand corner]] [1968] [[/pencil]]

[[Image - Post Office date stamp]] Aspen CO 81611 July 22  
[[underlined]] P [[/underlined]] M 1968 [[/date stamp]]

July 22  
Dear Bob & Nancy - How are you? Aspen is naturally air-conditioned  
cool & dry - coming west? Stop by. The geology is incredible - silver,  
coal, marble, oil shale, basalt, sandstone, slate, gypsum, molybdenum,  
iron ore - a mountain of each and more. Be well,  
Carl Andre c/o Gasthof Evert  
Aspen 81611 Colorado  
[[dividing the card in half and preprinted on the vertical]]  
105647  
Photography, Publishing: R. C. Bishop. P.O. 22353, Denver Colo. 80222  
[[/preprinted]]

[[5 cent stamp cancelled stamp]]  
[[preprinted]] POST CARD  
Address[[/preprinted]]  
BOB & NANCY  
SMITHSON  
799 GREENWICH ST  
NYC 10014  
NEW YORK



Carl Andre  
Transcribed and Reviewed by Digital Volunteers  
Extracted Apr-19-2024 12:19:03



## Smithsonian Institution

*Archives of American Art*

The mission of the Smithsonian is the increase and diffusion of knowledge - shaping the future by preserving our heritage, discovering new knowledge, and sharing our resources with the world. Founded in 1846, the Smithsonian is the world's largest museum and research complex, consisting of 19 museums and galleries, the National Zoological Park, and nine research facilities. Become an active part of our mission through the Transcription Center. Together, we are discovering secrets hidden deep inside our collections that illuminate our history and our world.

Join us!

The Transcription Center: <https://transcription.si.edu>

On Facebook: <https://www.facebook.com/SmithsonianTranscriptionCenter>

On Twitter: [@TranscribeSI](https://twitter.com/TranscribeSI)

Connect with the Smithsonian

Smithsonian Institution: [www.si.edu](http://www.si.edu)

On Facebook: <https://www.facebook.com/Smithsonian>

On Twitter: [@smithsonian](https://twitter.com/smithsonian)