



**Smithsonian Institution**

*Smithsonian Institution Archives*

## **Harrison G. Dyar - A catalogue of Lepidoptera, 1885 - 1913**

Extracted on Apr-19-2024 09:00:50

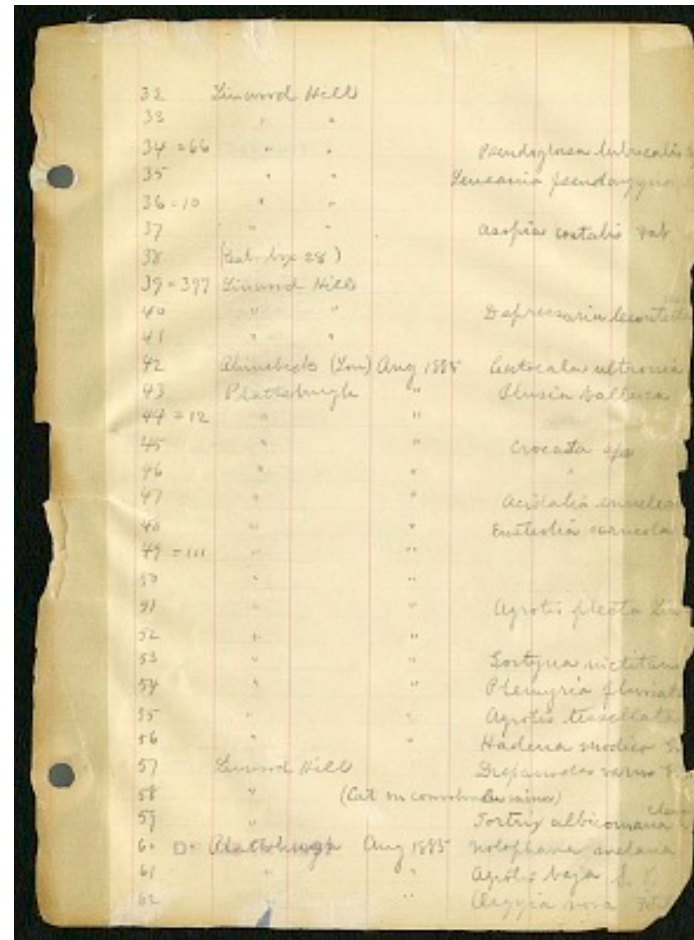
**The Smithsonian Institution thanks all digital volunteers that transcribed and reviewed this material. Your work enriches Smithsonian collections, making them available to anyone with an interest in using them.**

The Smithsonian Institution (the "Smithsonian") provides the content on this website ([transcription.si.edu](https://transcription.si.edu)), other Smithsonian websites, and third-party sites on which it maintains a presence ("SI Websites") in support of its mission for the "increase and diffusion of knowledge." The Smithsonian invites visitors to use its online content for personal, educational and other non-commercial purposes. By using this website, you accept and agree to abide by the [following terms](#).

- If sharing the material in personal and educational contexts, please cite the Smithsonian Institution Archives as source of the content and the project title as provided at the top of the document. Include the accession number or collection name; when possible, link to the Smithsonian Institution Archives website.
- If you wish to use this material in a for-profit publication, exhibition, or online project, please contact Smithsonian Institution Archives or [transcribe@si.edu](mailto:transcribe@si.edu)

For more information on this project and related material, contact the Smithsonian Institution Archives. [See this project](#) and other collections in the Smithsonian Transcription Center.

32 Linwood Hill  
 33 "[ditto for: Linwood Hill]  
 34 = 66 "[ditto for: Linwood Hill] Pseudoglossa lubricalis Gey  
 35 "[ditto for: Linwood Hill] Leucania pseudargyria  
 36 = 10 "[ditto for: Linwood Hill]  
 37 "[ditto for: Linwood Hill] Asopia costalis Fab  
 38 (Cat. box 28)  
 39 = 397 Linwood Hill  
 40 "[ditto for: Linwood Hill] Depressaria lecontella  
 41 "[ditto for: Linwood Hill]  
 42 Abinebeck (Lou) Aug 1885 Catocala ultronia  
 43 Plattsburgh "[ditto for: Aug 1885] Plusia balluca  
 44 = 12 "[ditto for: Plattsburgh] "[ditto for: Aug 1885]  
 45 "[ditto for: Plattsburgh] "[ditto for: Aug 1885] Crocata [[underline]]  
 spa [[/underline]]  
 46 "[ditto for: Plattsburgh] "[ditto for: Aug 1885] "[ditto for: Crocata]  
 47 "[ditto for: Plattsburgh] "[ditto for: Aug 1885] Acidalia enuclea  
 48 "[ditto for: Plattsburgh] "[ditto for: Aug 1885] Eustrolia  
 carneola  
 49 = 111 "[ditto for: Plattsburgh] "[ditto for: Aug 1885]  
 50 "[ditto for: Plattsburgh] "[Aug 1885]  
 51 "[ditto for: Plattsburgh] "[Aug 1885] Agrotis plecta Liu  
 52 "[ditto for: Plattsburgh] "[Aug 1885]  
 53 "[ditto for: Plattsburgh] "[Aug 1885] Gortyna nictitans  
 54 "[ditto for: Plattsburgh] "[Aug 1885] Pleunyria fluriata  
 55 "[ditto for: Plattsburgh] "[Aug 1885] Agnotis tessellata  
 56 "[ditto for: Plattsburgh] "[Aug 1885] Hadenia modico G  
 57 Linwood Hill Drepanodes varus G.  
 58 "[ditto for: Linwood Hill] (Cat on convolvulu minn)  
 59 "[ditto for: Linwood Hill] Tortrix albicomana ^ [[insertion]]  
 cleru [[insertion]]  
 60 Plattsburgh [[stamp over word in purple ink DR DEAN 1897]] Aug  
 1885 nolophana avelana  
 61 "[ditto for: Plattsburgh] "[ditto for: Aug 1885] Agrotis baja S. Y.  
 62 "[ditto for: Plattsburgh] "[ditto for: Aug 1885] Urygia nova  
 Fitrd



Harrison G. Dyar - A catalogue of Lepidoptera, 1885 - 1913  
 Transcribed and Reviewed by Digital Volunteers  
 Extracted Apr-19-2024 09:00:50



## Smithsonian Institution

*Smithsonian Institution Archives*

The mission of the Smithsonian is the increase and diffusion of knowledge - shaping the future by preserving our heritage, discovering new knowledge, and sharing our resources with the world. Founded in 1846, the Smithsonian is the world's largest museum and research complex, consisting of 19 museums and galleries, the National Zoological Park, and nine research facilities. Become an active part of our mission through the Transcription Center. Together, we are discovering secrets hidden deep inside our collections that illuminate our history and our world.

Join us!

The Transcription Center: <https://transcription.si.edu>

On Facebook: <https://www.facebook.com/SmithsonianTranscriptionCenter>

On Twitter: [@TranscribeSI](https://twitter.com/TranscribeSI)

Connect with the Smithsonian

Smithsonian Institution: [www.si.edu](http://www.si.edu)

On Facebook: <https://www.facebook.com/Smithsonian>

On Twitter: [@smithsonian](https://twitter.com/smithsonian)