



Smithsonian Institution

Smithsonian Institution Archives

Vernon Bailey - Field notes, December 11-16, 1891 and June 20-July 19, 1892

Extracted on Apr-18-2024 02:06:25

The Smithsonian Institution thanks all digital volunteers that transcribed and reviewed this material. Your work enriches Smithsonian collections, making them available to anyone with an interest in using them.

The Smithsonian Institution (the "Smithsonian") provides the content on this website (transcription.si.edu), other Smithsonian websites, and third-party sites on which it maintains a presence ("SI Websites") in support of its mission for the "increase and diffusion of knowledge." The Smithsonian invites visitors to use its online content for personal, educational and other non-commercial purposes. By using this website, you accept and agree to abide by the [following terms](#).

- If sharing the material in personal and educational contexts, please cite the Smithsonian Institution Archives as source of the content and the project title as provided at the top of the document. Include the accession number or collection name; when possible, link to the Smithsonian Institution Archives website.
- If you wish to use this material in a for-profit publication, exhibition, or online project, please contact Smithsonian Institution Archives or transcribe@si.edu

For more information on this project and related material, contact the Smithsonian Institution Archives. [See this project](#) and other collections in the Smithsonian Transcription Center.

Would like to work the sand dunes along Lake shore - out to get some new things in them

Michigan City is a good point to work sand dunes big bare drifts 75 ft high. Strike the lake again -

Past Michigan City in Indiana. Woods, brush and swamps, Jack oak, white oak, black oak, 2 kinds of pine, Alders, Willows, Popples, small evergreen shrubs

Log houses -

Small fields, Rail fences -

Low damp ground & must be unhealthy

[[end page]]

[[start page]]

Near Michigan line more woods - larger trees beech & elm & ash - no pine.

Better farms, all winter wheat -

Tamarac swamps -

Niles

Same kind of country to ~~Cassapolis~~ Lawton

~~Lawton~~ Lawton

Big black ash & tamarac swamps, walnut, hickory beech, sycamore & a large pine; only few pines more hilly near -

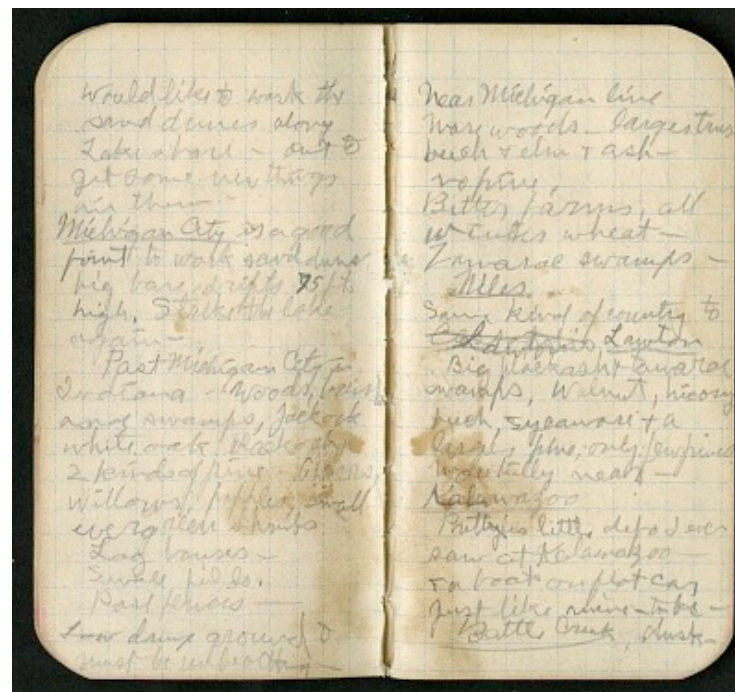
Kalamazoo

Prett y ~~ies~~ little depo I ever saw at

Kalamazoo -

& a boat on flat car Just like mine - to be -

Battle Creek dusk -



Vernon Bailey - Field notes, December 11-16, 1891 and June 20-July 19, 1892

Transcribed and Reviewed by Digital Volunteers

Extracted Apr-18-2024 02:06:25



Smithsonian Institution

Smithsonian Institution Archives

The mission of the Smithsonian is the increase and diffusion of knowledge - shaping the future by preserving our heritage, discovering new knowledge, and sharing our resources with the world. Founded in 1846, the Smithsonian is the world's largest museum and research complex, consisting of 19 museums and galleries, the National Zoological Park, and nine research facilities. Become an active part of our mission through the Transcription Center. Together, we are discovering secrets hidden deep inside our collections that illuminate our history and our world.

Join us!

The Transcription Center: <https://transcription.si.edu>

On Facebook: <https://www.facebook.com/SmithsonianTranscriptionCenter>

On Twitter: [@TranscribeSI](https://twitter.com/TranscribeSI)

Connect with the Smithsonian

Smithsonian Institution: www.si.edu

On Facebook: <https://www.facebook.com/Smithsonian>

On Twitter: [@smithsonian](https://twitter.com/smithsonian)