



Smithsonian Institution

Archives Center - NMAH

Charles Francis Hall Diary Volume 2, 1860

Extracted on Apr-24-2024 05:22:56

The Smithsonian Institution thanks all digital volunteers that transcribed and reviewed this material. Your work enriches Smithsonian collections, making them available to anyone with an interest in using them.

The Smithsonian Institution (the "Smithsonian") provides the content on this website (transcription.si.edu), other Smithsonian websites, and third-party sites on which it maintains a presence ("SI Websites") in support of its mission for the "increase and diffusion of knowledge." The Smithsonian invites visitors to use its online content for personal, educational and other non-commercial purposes. By using this website, you accept and agree to abide by the [following terms](#).

- If sharing the material in personal and educational contexts, please cite the Archives Center - NMAH as source of the content and the project title as provided at the top of the document. Include the accession number or collection name; when possible, link to the Archives Center - NMAH website.
- If you wish to use this material in a for-profit publication, exhibition, or online project, please contact Archives Center - NMAH or transcribe@si.edu

For more information on this project and related material, contact the Archives Center - NMAH. [See this project](#) and other collections in the Smithsonian Transcription Center.

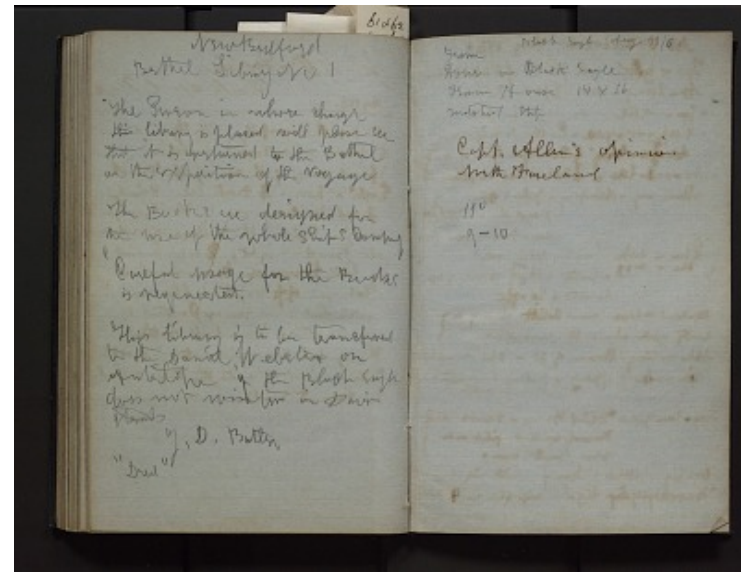
New Bedford
Bethel Library No 1
The Person in whose charge this library is placed will please see that it
is returned to the Bethel on the exposition of the voyage.
The Books are designed for the use of the whole ships company
Careful usage for the Books is requested.
This library is to be transferred to the Daniel Webster on Antelope if the
Black Eagle does not winter in Davis Straits

J D. Butler
"Deed"

[[end page]]
[[start page]]

Black Eagle Aug 11/60
From
House on Black Eagle
From House 14 x 16
matched stop

Capt. Allen's opinion
North Foreland
110
9-10



Charles Francis Hall Diary Volume 2, 1860
Transcribed and Reviewed by Digital Volunteers
Extracted Apr-24-2024 05:22:56



Smithsonian Institution

Archives Center - NMAH

The mission of the Smithsonian is the increase and diffusion of knowledge - shaping the future by preserving our heritage, discovering new knowledge, and sharing our resources with the world. Founded in 1846, the Smithsonian is the world's largest museum and research complex, consisting of 19 museums and galleries, the National Zoological Park, and nine research facilities. Become an active part of our mission through the Transcription Center. Together, we are discovering secrets hidden deep inside our collections that illuminate our history and our world.

Join us!

The Transcription Center: <https://transcription.si.edu>

On Facebook: <https://www.facebook.com/SmithsonianTranscriptionCenter>

On Twitter: [@TranscribeSI](https://twitter.com/TranscribeSI)

Connect with the Smithsonian

Smithsonian Institution: www.si.edu

On Facebook: <https://www.facebook.com/Smithsonian>

On Twitter: [@smithsonian](https://twitter.com/smithsonian)