



**Smithsonian Institution**

*Smithsonian Institution Archives*

## **Journal, Northwest Boundary Survey, 1857-1862**

Extracted on Apr-18-2024 06:12:38

**The Smithsonian Institution thanks all digital volunteers that transcribed and reviewed this material. Your work enriches Smithsonian collections, making them available to anyone with an interest in using them.**

The Smithsonian Institution (the "Smithsonian") provides the content on this website ([transcription.si.edu](https://transcription.si.edu)), other Smithsonian websites, and third-party sites on which it maintains a presence ("SI Websites") in support of its mission for the "increase and diffusion of knowledge." The Smithsonian invites visitors to use its online content for personal, educational and other non-commercial purposes. By using this website, you accept and agree to abide by the [following terms](#).

- If sharing the material in personal and educational contexts, please cite the Smithsonian Institution Archives as source of the content and the project title as provided at the top of the document. Include the accession number or collection name; when possible, link to the Smithsonian Institution Archives website.
- If you wish to use this material in a for-profit publication, exhibition, or online project, please contact Smithsonian Institution Archives or [transcribe@si.edu](mailto:transcribe@si.edu)

For more information on this project and related material, contact the Smithsonian Institution Archives. [See this project](#) and other collections in the Smithsonian Transcription Center.

~~[[strikethrough]]~~

The above all turned over to Dr. Kennerly at Chelemta Depot. July 15, 1860.

~~[[line]]~~

July 27th Aklew Cache

Pouched Rat Specimen ~~[[strikethrough]]~~ 129 ~~[[strikethrough]]~~

" ~~[[Ditto for: July]]~~ 28th Small Pre on trail to Cp Mooyie

Louisiana Tanager

Cedar birds, apparently gathering in small flocks, perhaps only families, feeding on service bs.

Maryland yellow throat. This bird I think nests in wet bushy places.

Night Hawk

July 30th Reaching the Mooyie river found "the common brook trout

"Peestl" abundant.

~~[[strikethrough]]~~

~~[[strikethrough]]~~

Aug. 3d at Camp Mooyie - Found four small hares in a farm - preserved these as specimens. They are distinguished as having a white mark on the forehead.

Specimen Nos. 129. 30. 31

Brook trout "Peestl" very abundant in Mooyie R. Peabody also took in the branch

~~[[strikethrough]]~~

~~[[end page]]~~

~~[[start page]]~~

~~[[strikethrough]]~~

another species weighing over 4 lb with red specks - small head

~~[[strikethrough]]~~

Aug. 13th Little Chief Hares heard among the rocks on the Mooyie River.

~~[[strikethrough]]~~

Aug. 16th Divide of Mooyie & Kootenay Canada grouse & Canada jay.

Young of Canada grouse not one size of quails

~~[[strikethrough]]~~

~~[[strikethrough]]~~

Aug. 17 Blue grouse feeding on the flats of the dried up ponds - probably on grass seeds.

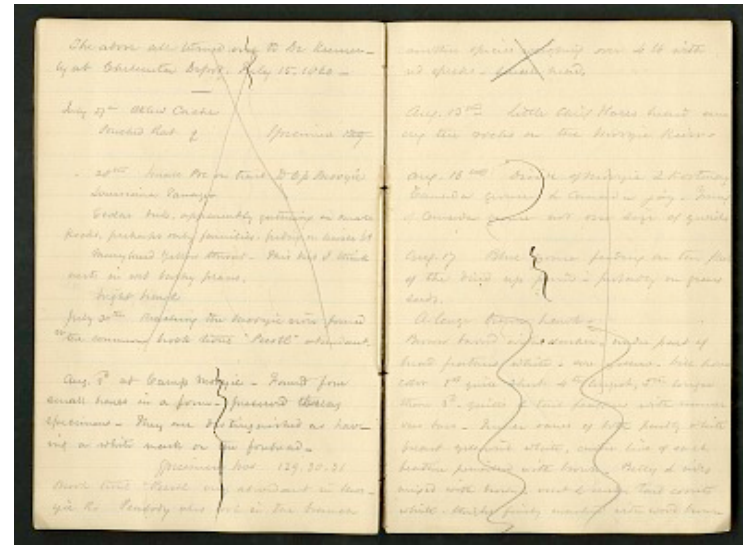
~~[[strikethrough]]~~

~~[[strikethrough]]~~

A large brown hawk.

Brown barred with darker, under part of head feathers white, are yellow, bill brown color 1st quill short 4th longest, 5th longer than 3d, quills & tail feathers with numerous bars. Inner vanes of both partly white breast yellowish white, centre line of each feather pencilled with brown. Belly & sides mixed with brown, vent & under tail cornets white, thighs finely marked with wood brown

~~[[strikethrough]]~~



Journal, Northwest Boundary Survey, 1857-1862  
Transcribed and Reviewed by Digital Volunteers  
Extracted Apr-18-2024 06:12:38



## Smithsonian Institution

*Smithsonian Institution Archives*

The mission of the Smithsonian is the increase and diffusion of knowledge - shaping the future by preserving our heritage, discovering new knowledge, and sharing our resources with the world. Founded in 1846, the Smithsonian is the world's largest museum and research complex, consisting of 19 museums and galleries, the National Zoological Park, and nine research facilities. Become an active part of our mission through the Transcription Center. Together, we are discovering secrets hidden deep inside our collections that illuminate our history and our world.

Join us!

The Transcription Center: <https://transcription.si.edu>

On Facebook: <https://www.facebook.com/SmithsonianTranscriptionCenter>

On Twitter: [@TranscribeSI](https://twitter.com/TranscribeSI)

Connect with the Smithsonian

Smithsonian Institution: [www.si.edu](http://www.si.edu)

On Facebook: <https://www.facebook.com/Smithsonian>

On Twitter: [@smithsonian](https://twitter.com/smithsonian)